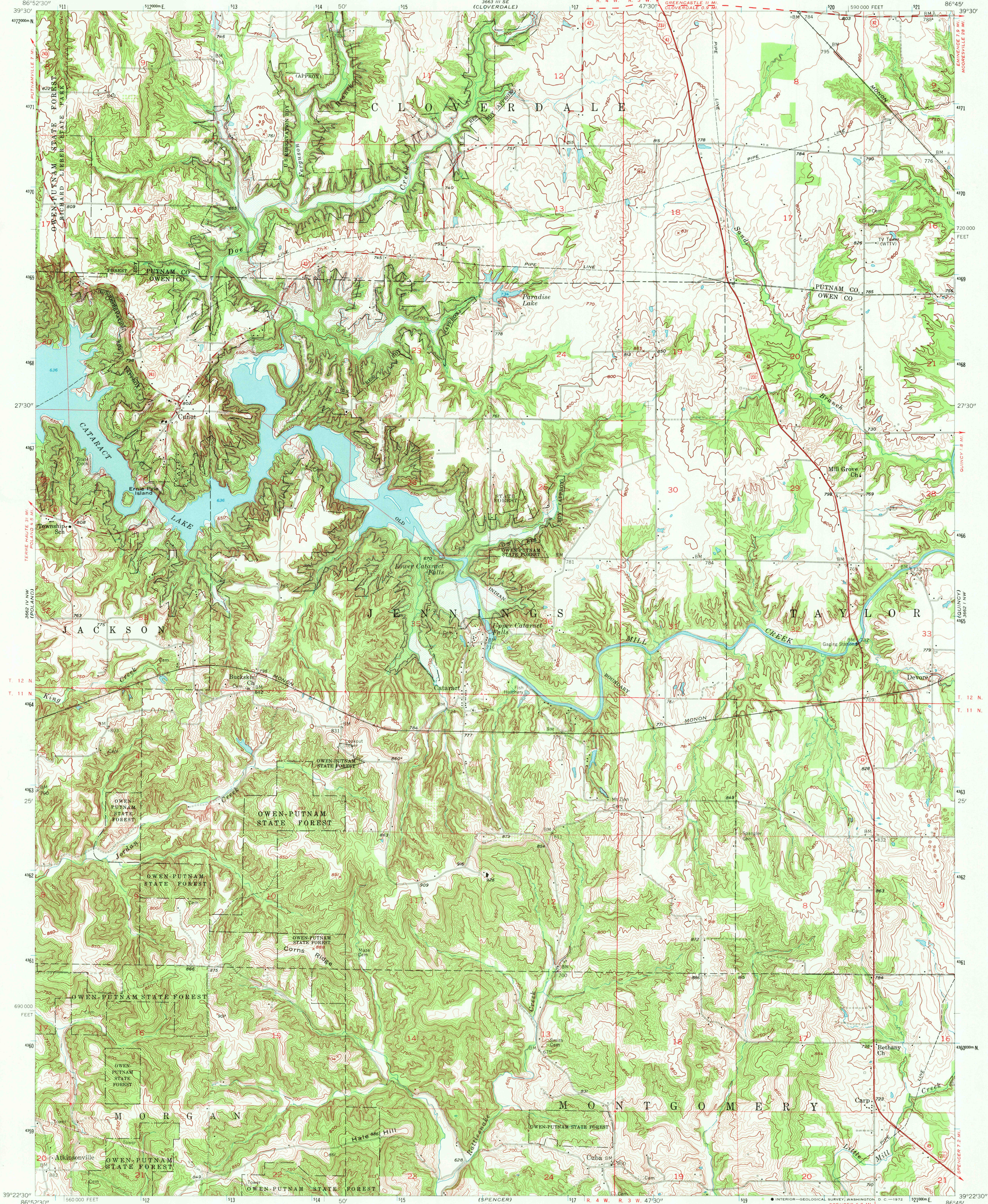


UNITED STATES
DEPARTMENT OF THE INTERIOR
GEOLOGICAL SURVEY

CATARACT QUADRANGLE
INDIANA
7.5 MINUTE SERIES (TOPOGRAPHIC)



Mapped, edited, and published by the Geological Survey
Control by USGS, USC&GS, and Indiana Flood Control and
Water Resources Commission
Topography from aerial photographs by photogrammetric methods
Aerial photographs taken 1951. Field check 1956
Polyconic projection. 1927 North American datum
10,000-foot grid based on Indiana coordinate system,
west zone
1000-meter Universal Transverse Mercator grid ticks,
zone 16, shown in blue
Area covered by dashed light-blue pattern
is subject to controlled inundation to 704 feet
Unchecked elevations are shown in brown

UTM GRID AND 1956 MAGNETIC NORTH
DECLINATION AT CENTER OF SHEET

SCALE 1:24,000
1 1000 0 1000 2000 3000 4000 5000 6000 7000 FEET
1 5 0 5 10 KILOMETER
CONTOUR INTERVAL 10 FEET
DATUM IS MEAN SEA LEVEL



ROAD CLASSIFICATION
Heavy-duty ——— Light-duty ———
Medium-duty ——— Unimproved dirt ———
U.S. Route ——— State Route ———
USGS
HISTORICAL FILE JUL 6 1972
TOPOGRAPHIC DIVISION

CATARACT, IND.
N 3922.5-W 8645/7.5

1956

AMS 3662 IV NE-SERIES W851

THIS MAP COMPLIES WITH NATIONAL MAP ACCURACY STANDARDS
FOR SALE BY U. S. GEOLOGICAL SURVEY, WASHINGTON, D. C. 20242
AND INDIANA DEPARTMENT OF NATURAL RESOURCES, INDIANAPOLIS, INDIANA 46204
A FOLDER DESCRIBING TOPOGRAPHIC MAPS AND SYMBOLS IS AVAILABLE ON REQUEST