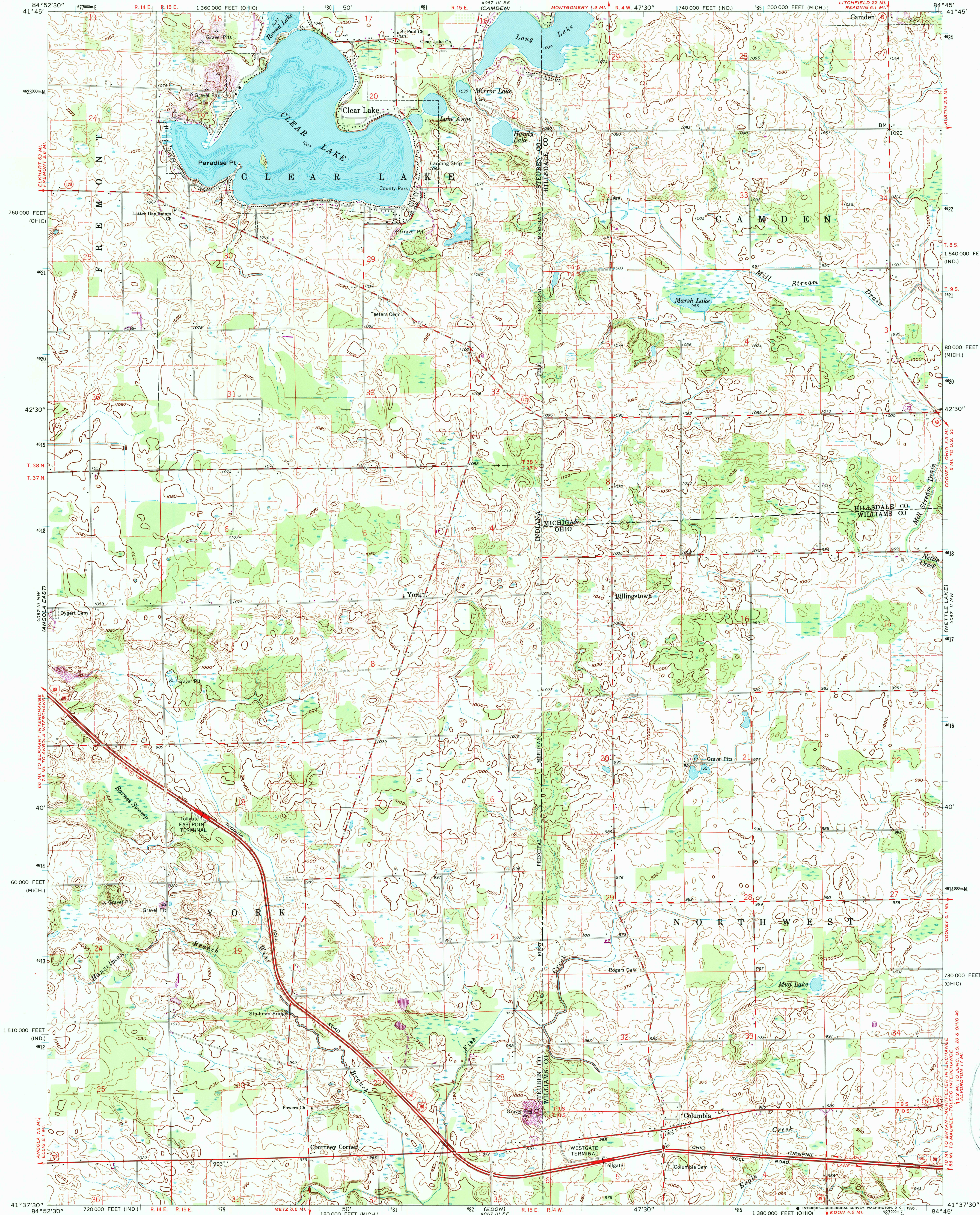
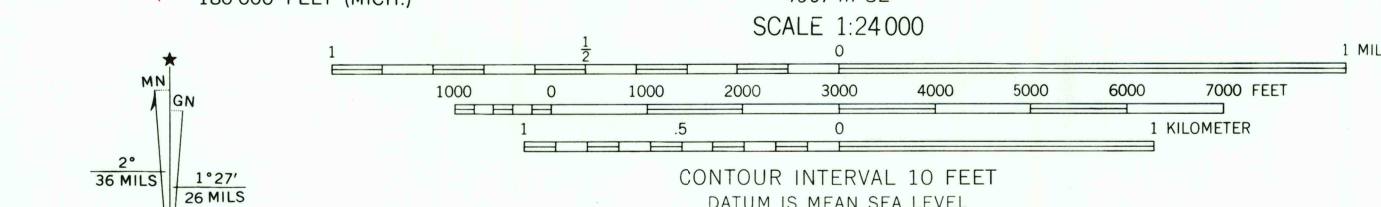


UNITED STATES  
DEPARTMENT OF THE INTERIOR  
GEOLOGICAL SURVEY

CLEAR LAKE QUADRANGLE  
INDIANA-OHIO-MICHIGAN  
7.5 MINUTE SERIES (TOPOGRAPHIC)



Mapped, edited, and published by the Geological Survey in cooperation with States of Indiana and Ohio  
Control by USGS and USC&GS  
Topography of Michigan and Ohio area by photogrammetric methods from aerial photographs taken 1959. Field checked 1961. Planimetry of Indiana area by photogrammetric methods from aerial photographs taken 1959. Topography by plane-table surveys 1938. Revised 1961.  
Depth curves compiled from USGS-Indiana Department of Conservation Lake Chart  
Polyconic projection. 1927 North American datum. 10,000-foot grids based on Indiana coordinate system, east zone, Ohio coordinate system, north zone, and Michigan coordinate system, east zone. 1000-meter Universal Transverse Mercator grid ticks, zone 16, shown in blue  
Land lines in Ohio based on Michigan Meridian  
Fine red dashed lines indicate selected fence and field lines where generally visible on aerial photographs. This information is unchecked



THIS MAP COMPLIES WITH NATIONAL MAP ACCURACY STANDARDS  
FOR SALE BY U.S. GEOLOGICAL SURVEY, DENVER, COLORADO 80225, OR RESTON, VIRGINIA 22092  
AND INDIANA DEPARTMENT OF NATURAL RESOURCES, INDIANAPOLIS, INDIANA 46204  
A FOLDER DESCRIBING TOPOGRAPHIC MAPS AND SYMBOLS IS AVAILABLE ON REQUEST

Revisions shown in purple compiled in cooperation with State of Ohio agencies from aerial photographs taken 1973. This information not field checked

ROAD CLASSIFICATION  
Heavy-duty ——— Light-duty ———  
Medium-duty ——— Unimproved dirt ———  
Interstate Route U.S. Route State Route

CLEAR LAKE, IND.-OHIO-MICH.  
N41375-W8445/7.5  
PHOTOINSPECTED 1979  
1961

PHOTOREVISED 1973  
AMS 4067 III NE-SERIES V851