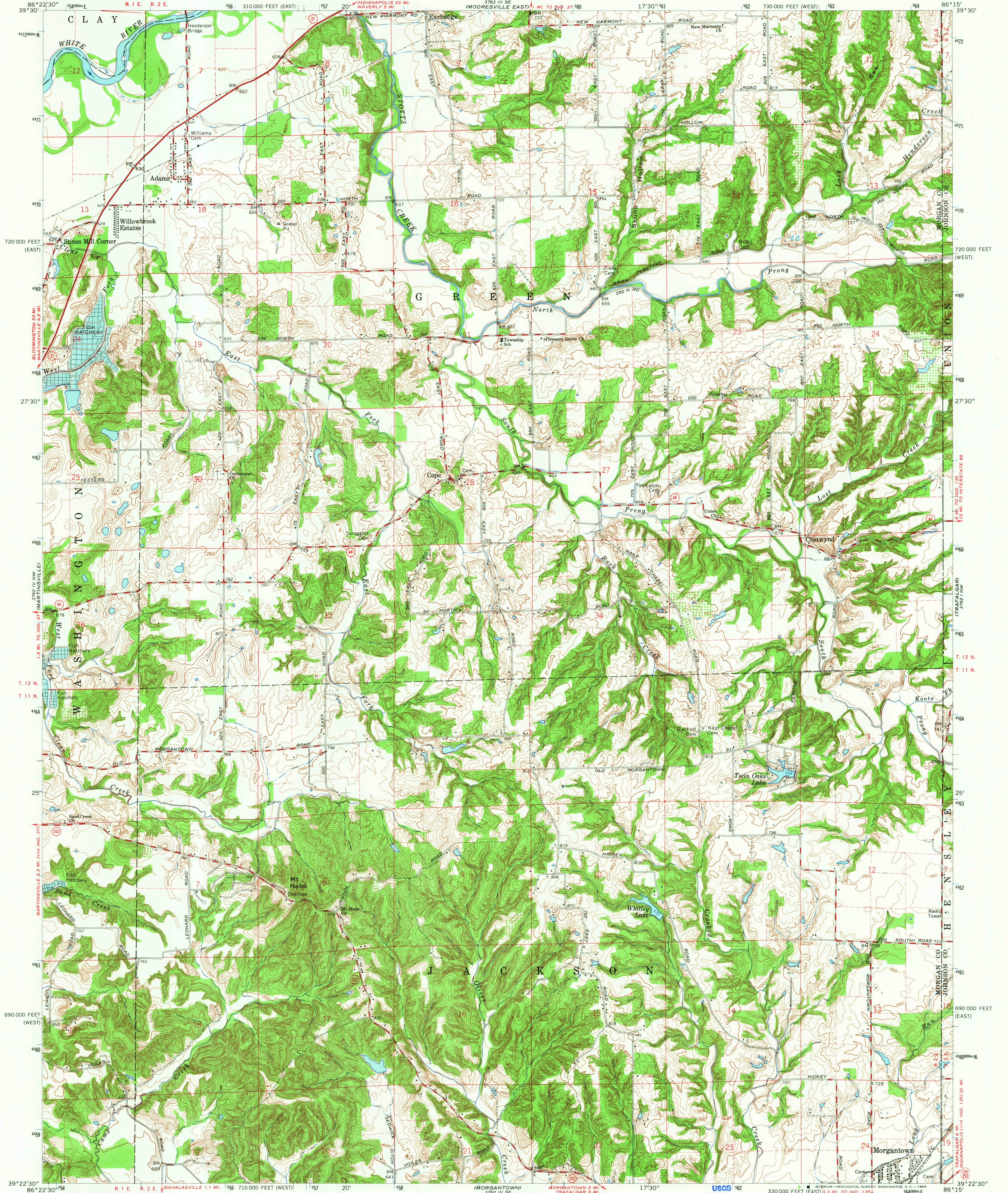
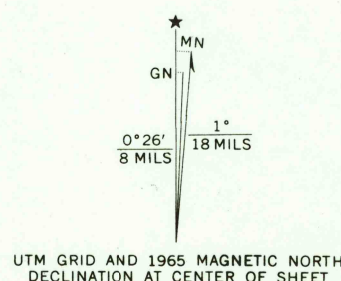


UNITED STATES
DEPARTMENT OF THE INTERIOR
GEOLOGICAL SURVEY

COPE QUADRANGLE
INDIANA
7.5 MINUTE SERIES (TOPOGRAPHIC)



Mapped, edited, and published by the Geological Survey
Revised in cooperation with Indiana Department of
Natural Resources
Control by USGS, USC&GS and Indiana Flood Control and Water
Resources Commission
Topography by photogrammetric methods from aerial photographs
taken 1953. Field checked 1955. Revised 1965
Polyconic projection. 1927 North American datum
10,000-foot grids based on Indiana coordinate system,
west and east zones
1000-meter Universal Transverse Mercator grid ticks,
zone 16, shown in blue
Fine red dashed lines indicate selected fence and field lines where
generally visible on aerial photographs. This information is unchecked



SCALE 1:24,000
CONTOUR INTERVAL 10 FEET
DATUM IS MEAN SEA LEVEL

THIS MAP COMPLIES WITH NATIONAL MAP ACCURACY STANDARDS
FOR SALE BY U.S. GEOLOGICAL SURVEY, WASHINGTON, D.C. 20242
AND INDIANA DEPARTMENT OF NATURAL RESOURCES, INDIANAPOLIS, INDIANA
A FOLDER DESCRIBING TOPOGRAPHIC MAPS AND SYMBOLS IS AVAILABLE ON REQUEST

USGS
Historical File
Topographic Division

ROAD CLASSIFICATION
Heavy-duty ———— Light-duty ————
Medium-duty ———— Unimproved dirt ————
○ State Route



U.S.G.S.
FILE COPY
TOPOGRAPHIC DIVISION

COPE, IND.
N3922.5-W8615.7.5
1965

AMS 3762 IV NE-SERIES V851

2715
OCT 24 1965