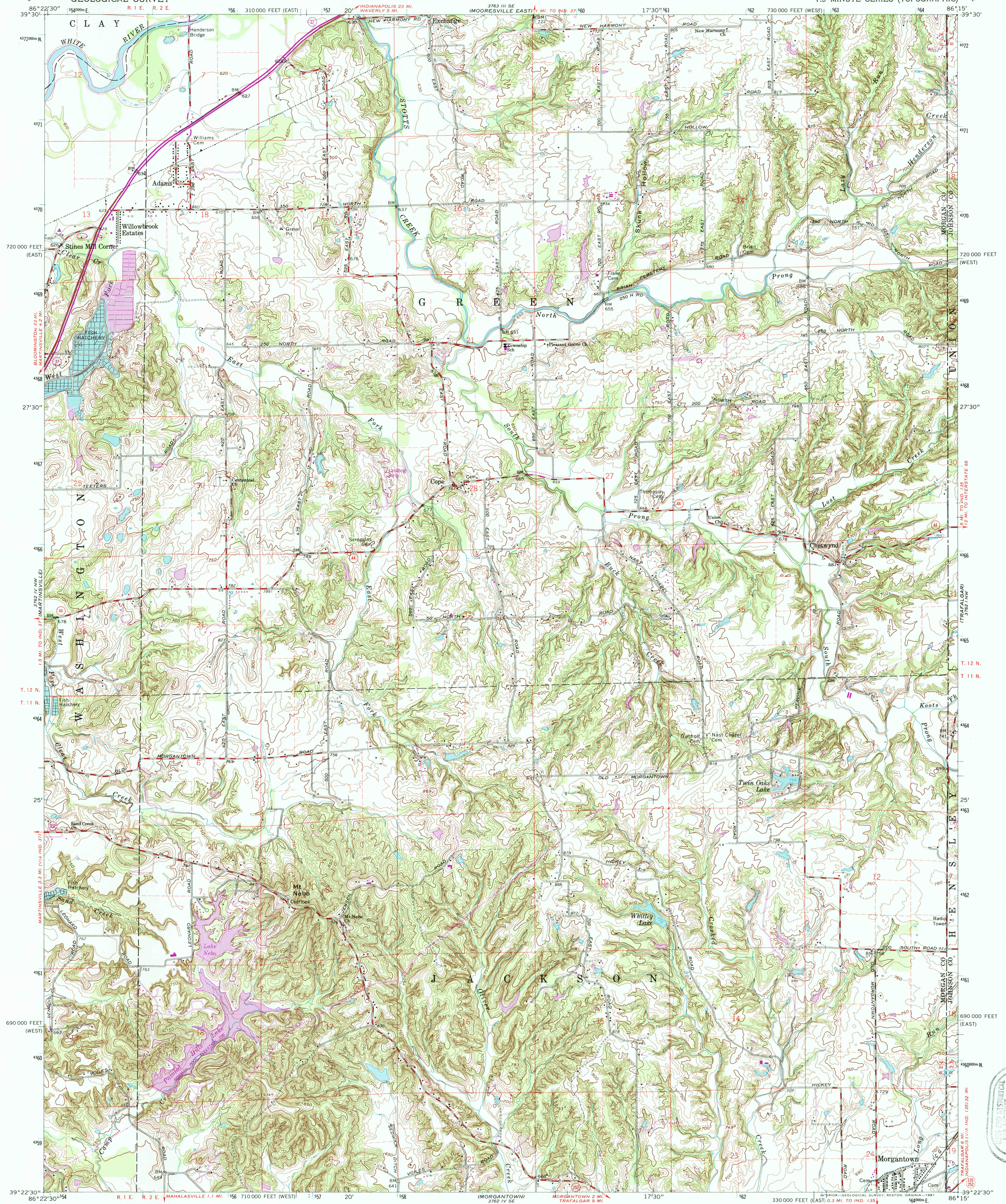


UNITED STATES  
DEPARTMENT OF THE INTERIOR  
GEOLOGICAL SURVEY

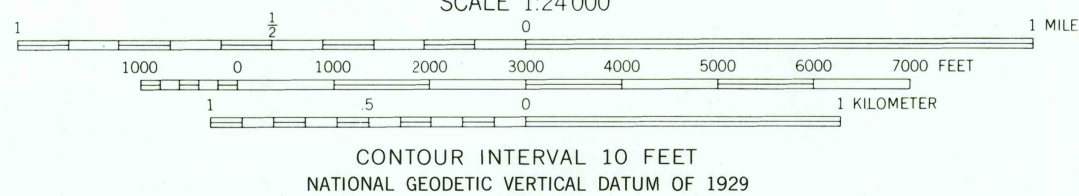
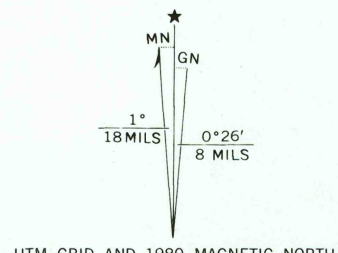
COPE QUADRANGLE  
INDIANA  
7.5 MINUTE SERIES (TOPOGRAPHIC)



Mapped, edited, and published by the Geological Survey  
Revised in cooperation with Indiana Department of  
Natural Resources

Control by USGS, USC&GS and Indiana Flood Control and Water  
Resources Commission  
Topography by photogrammetric methods from aerial photographs  
taken 1953. Field checked 1955. Revised 1965

Polyconic projection  
10,000-foot grids based on Indiana coordinate system,  
west and east zones  
1000-meter Universal Transverse Mercator grid ticks,  
zone 16, shown in blue 1927 North American Datum  
To place on the predicted North American Datum 1983  
move the projection lines 2 meters south and  
1 meter west as shown by dashed corner ticks



ROAD CLASSIFICATION	
Heavy-duty	Light-duty
Medium-duty	Unimproved dirt
State Route	

THIS MAP COMPLIES WITH NATIONAL MAP ACCURACY STANDARDS  
FOR SALE BY U. S. GEOLOGICAL SURVEY, RESTON, VIRGINIA 22092  
AND INDIANA DEPARTMENT OF NATURAL RESOURCES, INDIANAPOLIS, INDIANA 46204  
A FOLDER DESCRIBING TOPOGRAPHIC MAPS AND SYMBOLS IS AVAILABLE ON REQUEST

Fine red dashed lines indicate selected fence and field lines where  
generally visible on aerial photographs. This information is unchecked  
Revisions shown in purple compiled in cooperation with State of  
Indiana agencies from aerial photographs taken 1977 and other  
source data. This information not field checked. Map edited 1980

COPE, IND.  
N3922.5—W8615.7/5  
1965  
PHOTOREVISED 1980  
DMA 3762 IV NE—SERIES V851

RECEIVED  
MAY 3 1968  
REC'D FTIE 0024

