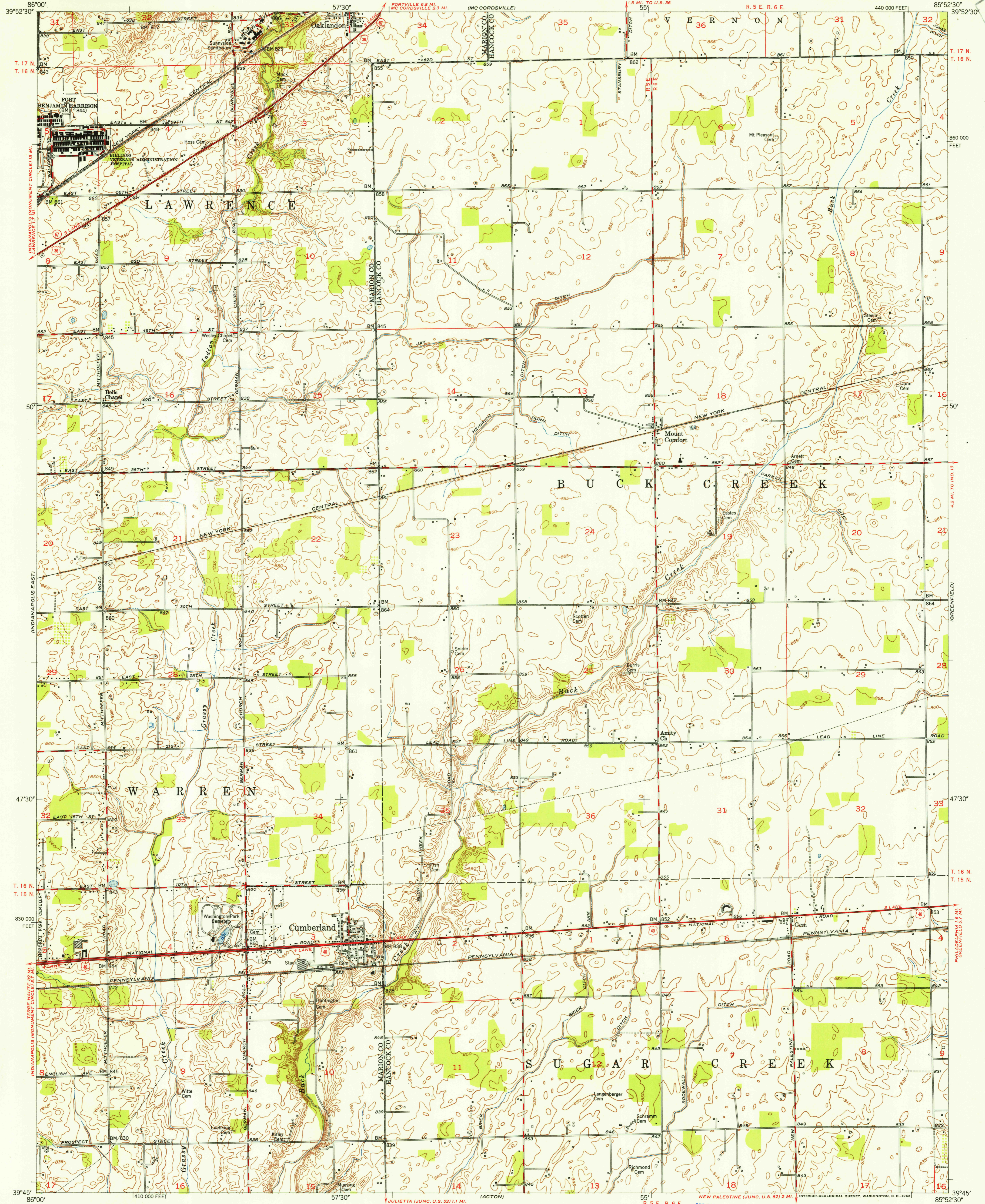
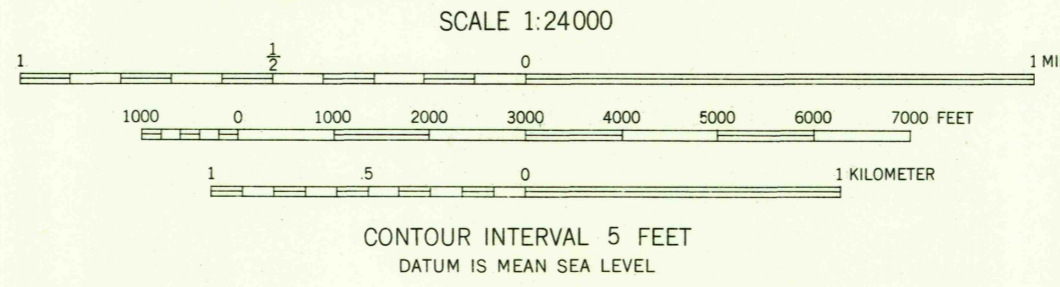


FILE COPY
Inspection and Editing



Maped, edited, and published by the Geological Survey
Control by USGS, and USC&GS
Culture and drainage in part compiled from
aerial photographs taken 1951
Topography by plane-table surveys 1952
Polyconic projection. 1927 North American datum
10,000-foot grid based on Indiana coordinate system,
east zone



USGS
Historical File
Topographic Division

ROAD CLASSIFICATION
Heavy-duty 4 LANE 6 LANE Light-duty
Medium-duty 4 LANE 6 LANE Unimproved dirt
U. S. Route State Route



FILE COPY
Inspection and Editing

CUMBERLAND, IND.
N3945-W8552.5/7.5
1952

THIS MAP COMPLIES WITH NATIONAL MAP ACCURACY STANDARDS
FOR SALE BY U. S. GEOLOGICAL SURVEY, WASHINGTON 25, D. C.
AND INDIANA DEPARTMENT OF CONSERVATION, INDIANAPOLIS, INDIANA
A FOLDER DESCRIBING TOPOGRAPHIC MAPS AND SYMBOLS IS AVAILABLE ON REQUEST