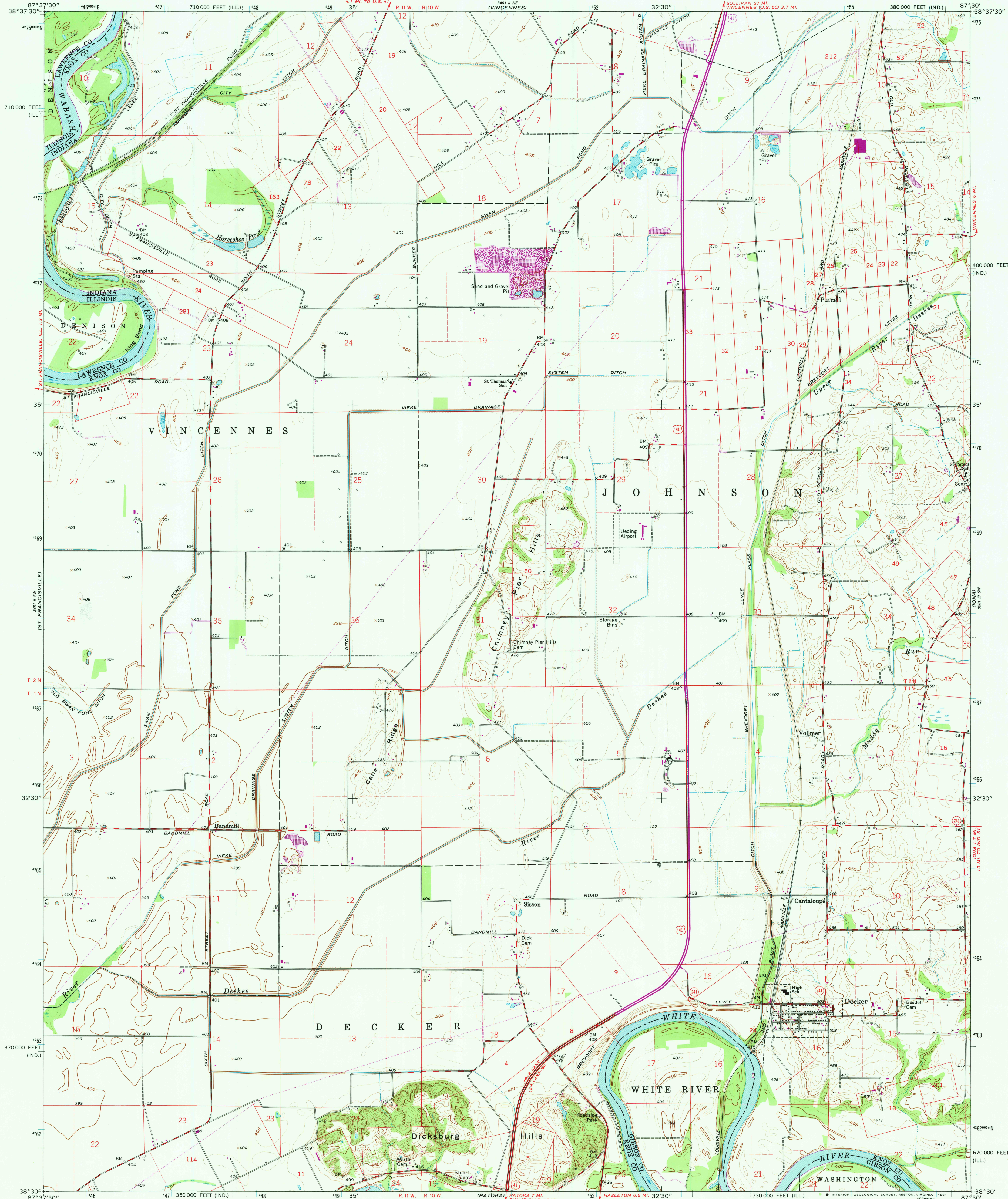


UNITED STATES
DEPARTMENT OF THE INTERIOR
GEOLOGICAL SURVEY

STATE OF INDIANA
INDIANA DEPARTMENT OF CONSERVATION
INDIANAPOLIS, INDIANA

DECKER QUADRANGLE
INDIANA-ILLINOIS
7.5 MINUTE SERIES (TOPOGRAPHIC)



Mapped, edited, and published by the Geological Survey
Control by USGS, USC&GS, USCE, and Indiana Flood Control and
Water Resources Commission
Topography by photogrammetric methods from aerial photographs
taken 1958 and planetable surveys 1961

Polyconic projection
10,000-foot grids based on Indiana coordinate system, west zone,
and Illinois coordinate system, east zone
1000-meter Universal Transverse Mercator grid ticks,
zone 16, shown in blue. 1927 North American Datum
To place on the predicted North American Datum 1983
move the projection lines 2 meters south and
2 meters east as shown by dashed corner ticks
Fine red dashed lines indicate selected fence and field lines where
generally visible on aerial photographs. This information is unchecked
All wells shown are oil wells

UTM GRID AND 1980 MAGNETIC NORTH
DECLINATION AT CENTER OF SHEET
Where omitted, land lines have not been established
or are not shown because of insufficient data

SCALE 1:24,000
CONTOUR INTERVAL 10 FEET
DOTTED LINES REPRESENT 5-FOOT CONTOURS
NATIONAL GEODETIC VERTICAL DATUM OF 1929

THIS MAP COMPLIES WITH NATIONAL MAP ACCURACY STANDARDS
FOR SALE BY U. S. GEOLOGICAL SURVEY, RESTON, VIRGINIA, 22092,
INDIANA DEPARTMENT OF NATURAL RESOURCES, INDIANAPOLIS, INDIANA 46204
AND BY THE STATE GEOLOGICAL SURVEY, URBANA, ILLINOIS 61801
A FOLDER DESCRIBING TOPOGRAPHIC MAPS AND SYMBOLS IS AVAILABLE ON REQUEST

Revisions shown in purple compiled in cooperation with State of
Indiana agencies from aerial photographs taken 1977 and other
source data. This information not field checked. Map edited 1980

ROAD CLASSIFICATION
Heavy-duty ——— Light-duty ———
Medium-duty ——— Unimproved dirt ———
U. S. Route ——— State Route ———

DECKER, IND.-ILL.

N3830—W8730/7.5

1961
PHOTOREVISED 1980
DMA 3461 II SE—SERIES Y81

MAY 5 1981
2750