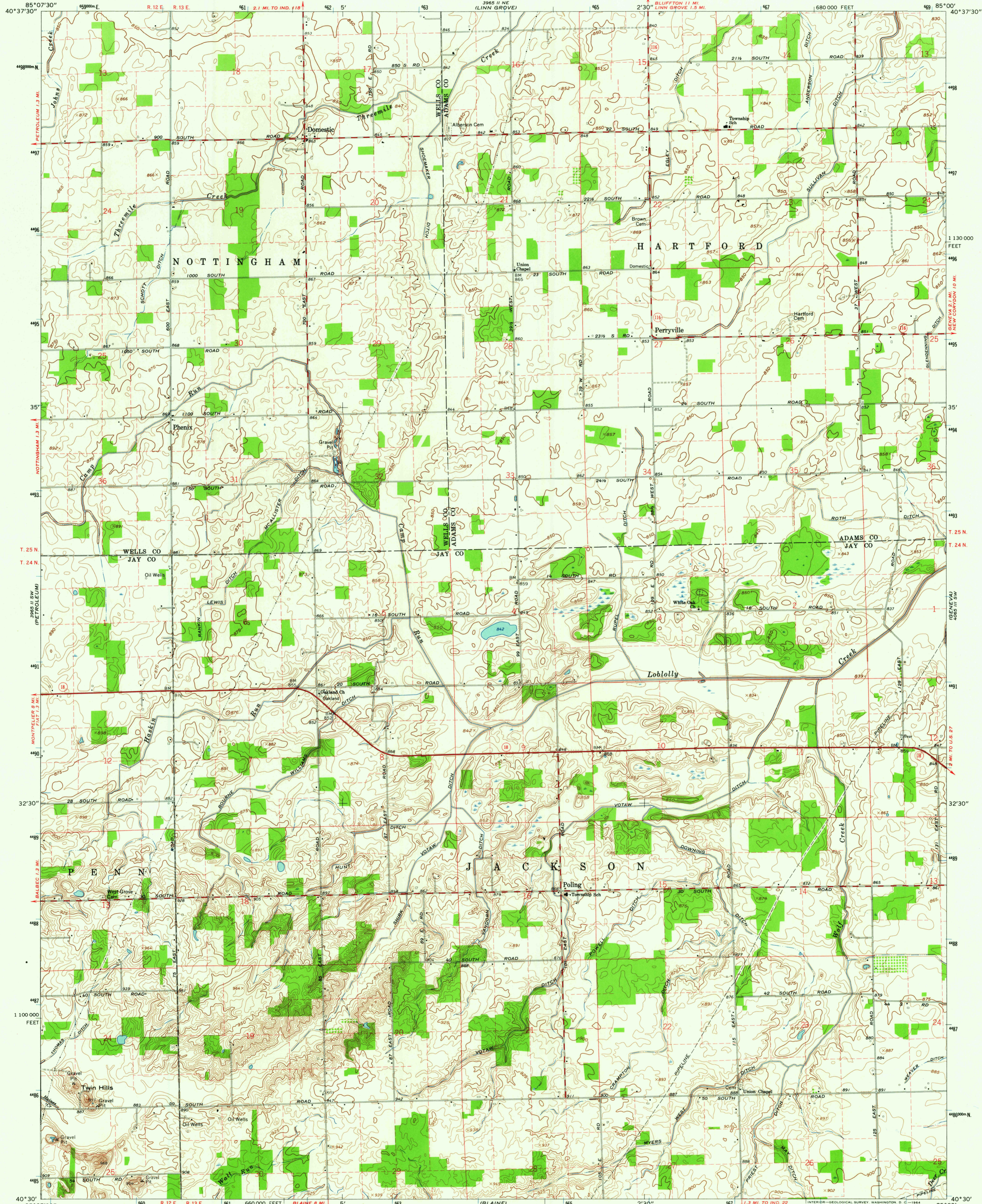
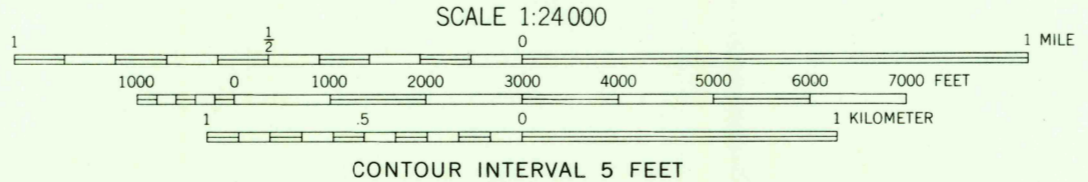


3965 11 MI. (PETROLEUM 1.3 MI.)

3966 11 MI. (BERNE)



Mapped, edited, and published by the Geological Survey... Control by USGS, USC&GS, and Indiana Flood Control and Water Resources Commission... Topography by photogrammetric methods from aerial photographs taken 1960. Field checked 1962... Polyconic projection. 1927 North American datum... 10,000-foot grid based on Indiana coordinate system, east zone 1000-meter Universal Transverse Mercator grid ticks, zone 16, shown in blue... Fine red dashed lines indicate selected fence and field lines where generally visible on aerial photographs. This information is unchecked



USGS Historical File Topographic Division

Table with 2 columns: Road Classification (Heavy-duty, Medium-duty, Light-duty, Unimproved dirt) and State Route symbols.



THIS MAP COMPLIES WITH NATIONAL MAP ACCURACY STANDARDS FOR SALE BY U.S. GEOLOGICAL SURVEY, WASHINGTON 25, D. C. AND INDIANA DEPARTMENT OF CONSERVATION, INDIANAPOLIS, INDIANA A FOLDER DESCRIBING TOPOGRAPHIC MAPS AND SYMBOLS IS AVAILABLE ON REQUEST

DOMESTIC, IND. N4030-W8500/7.5 1962

AMS 3965 II SE-SERIES V851

MAR 23 1964

2660