

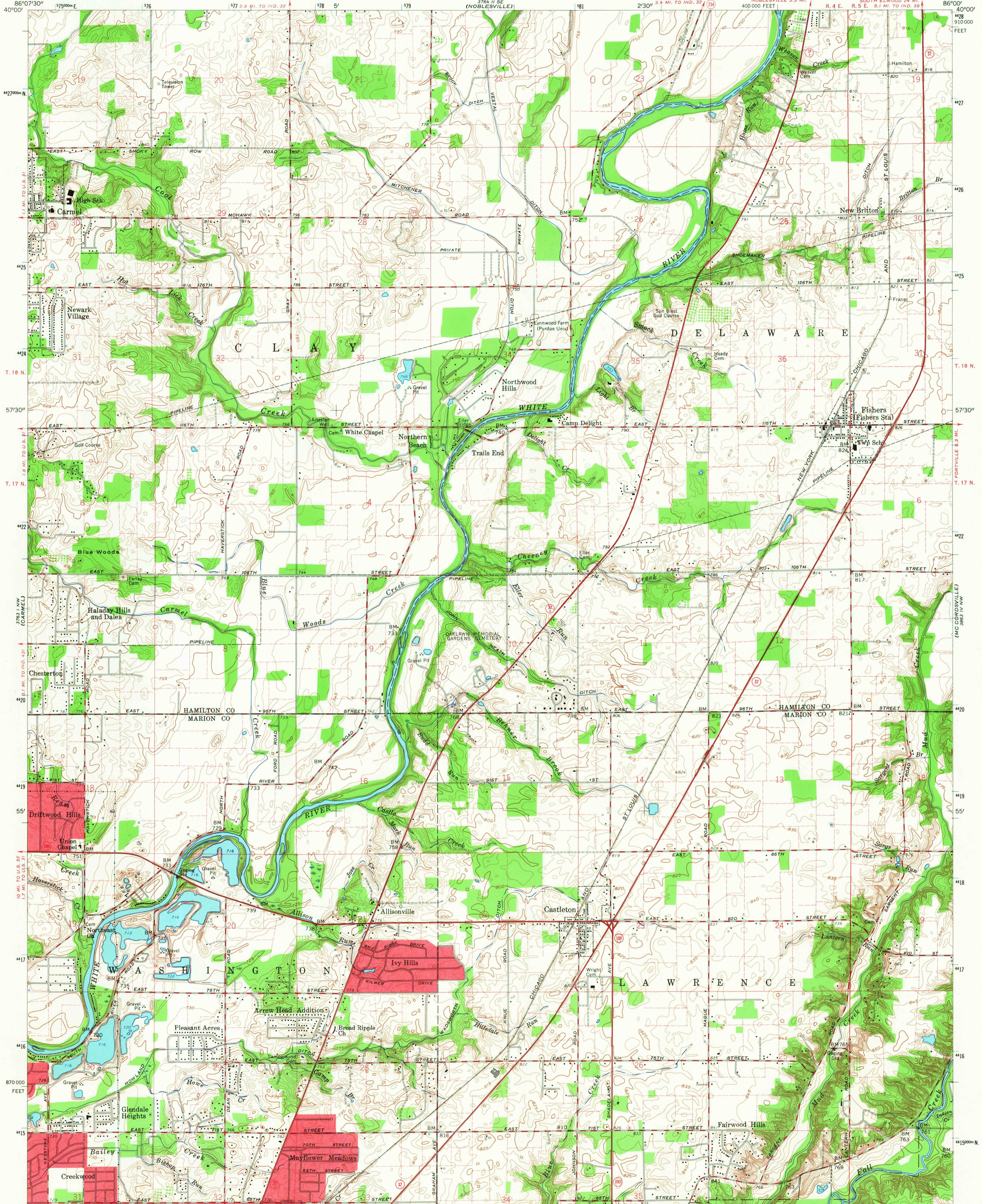
WESTFIELD

UNITED STATES
DEPARTMENT OF THE INTERIOR
GEOLOGICAL SURVEY

STATE OF INDIANA
INDIANA DEPARTMENT OF CONSERVATION
INDIANAPOLIS, INDIANA

FISHERS QUADRANGLE
INDIANA
7.5 MINUTE SERIES (TOPOGRAPHIC)

FRIVERWOOD



Mapped, edited, and published by the Geological Survey
Control by USGS, USC&GS, and Indiana Flood Control and Water Resources Commission
Culture and drainage in part compiled from aerial photographs taken 1951. Topography by planetable surveys 1952
Revised 1959

Polyconic projection. 1927 North American datum
10,000-foot grid based on Indiana coordinate system, east zone
1000-meter Universal Transverse Mercator grid ticks, zone 16, shown in blue

Fine red dashed lines indicate selected fence and field lines where generally visible on aerial photographs. This information is unchecked
Red tint indicates areas in which only landmark buildings are shown

UTM GRID AND 1959 MAGNETIC NORTH DECLINATION AT CENTER OF SHEET

SCALE 1:24,000

CONTOUR INTERVAL 5 FEET
DATUM IS MEAN SEA LEVEL

USGS
Historical File
Topographic Division

ROAD CLASSIFICATION

Heavy-duty	Light-duty
Medium-duty	Unimproved dirt

State Route

INDIANA
QUADRANGLE LOCATION

U.S.G.S.
FISHERS, IND.
N 3952.5-W 8600/7.5
1959
AMS 3763 | NE-SERIES V851

2405
NOV 1962