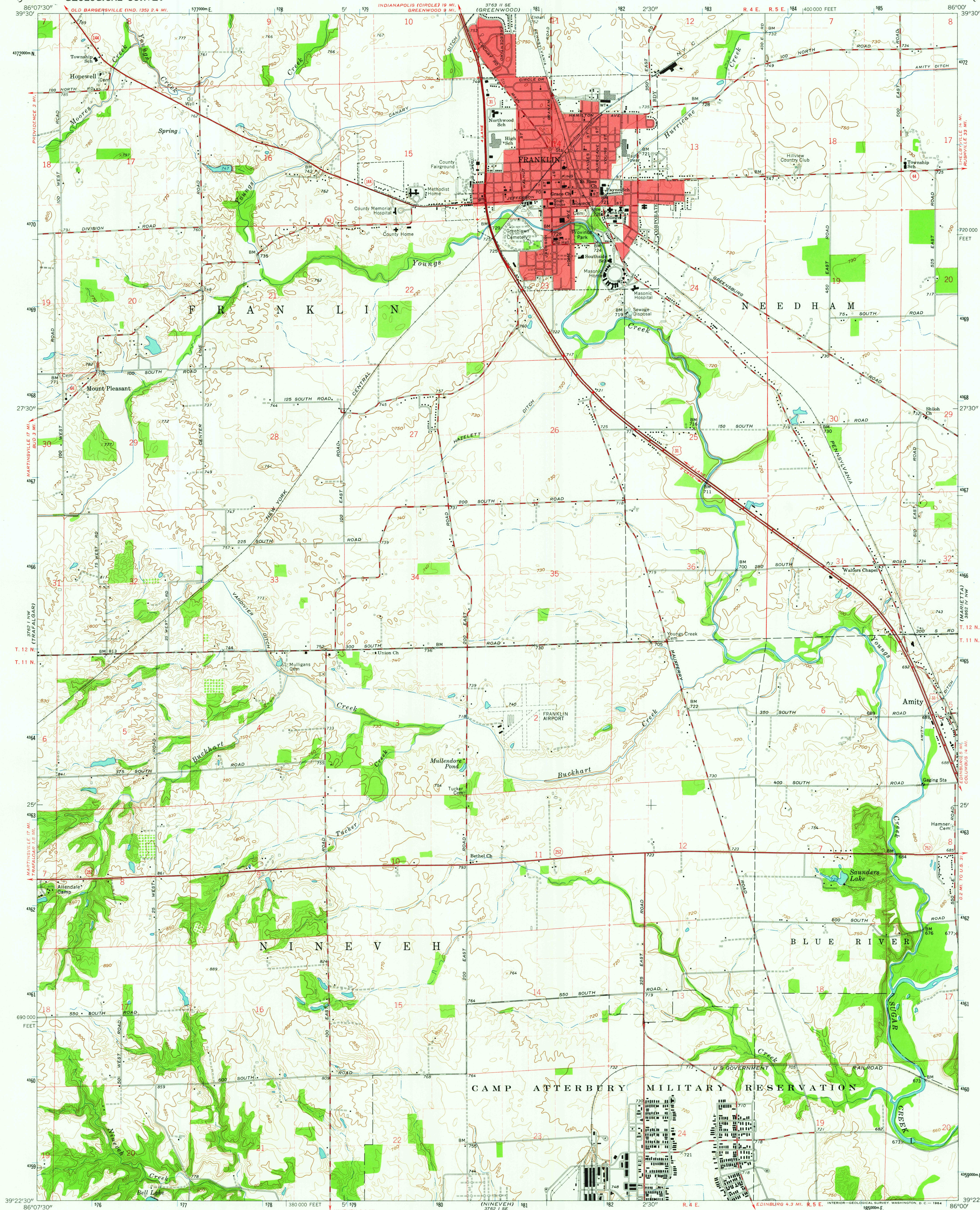


UNITED STATES
DEPARTMENT OF THE INTERIOR
GEOLOGICAL SURVEY

FRANKLIN QUADRANGLE
INDIANA-JOHNSON CO.
7.5 MINUTE SERIES (TOPOGRAPHIC)
NE 1/4 FRANKLIN 15' QUADRANGLE



Mapped, edited, and published by the Geological Survey
Revised in cooperation with State of Indiana
Department of Conservation
Control by USGS and USGS
Planimetry by photogrammetric methods from aerial photographs taken
1944. Topography by planimetric surveys 1946-47. Revised 1961
Polyconic projection. 1927 North American datum
10,000-foot grid based on Indiana coordinate system, east zone
1000-meter Universal Transverse Mercator grid ticks,
zone 16, shown in blue
Fine red dashed lines indicate selected fence and field lines where
generally visible on aerial photographs. This information is unchecked
Red tint indicates area in which only landmark buildings are shown

UTM GRID AND 1961 MAGNETIC NORTH
DECLINATION AT CENTER OF SHEET

THIS MAP COMPLIES WITH NATIONAL MAP ACCURACY STANDARDS
FOR SALE BY U.S. GEOLOGICAL SURVEY, WASHINGTON 25, D. C.
AND INDIANA DEPARTMENT OF CONSERVATION, INDIANAPOLIS, INDIANA
A FOLDER DESCRIBING TOPOGRAPHIC MAPS AND SYMBOLS IS AVAILABLE ON REQUEST

USGS
Historical File
Topographic Division

ROAD CLASSIFICATION
Heavy-duty ——— Light-duty ———
Medium-duty ——— Unimproved dirt ———
U.S. Route ——— State Route ———



FRANKLIN, IND.
NE 1/4 FRANKLIN 15' QUADRANGLE
N3922.5-W8600/7.5

1961
AMS 3762 1 NE—SERIES V851

FEB - 6 1964

2525