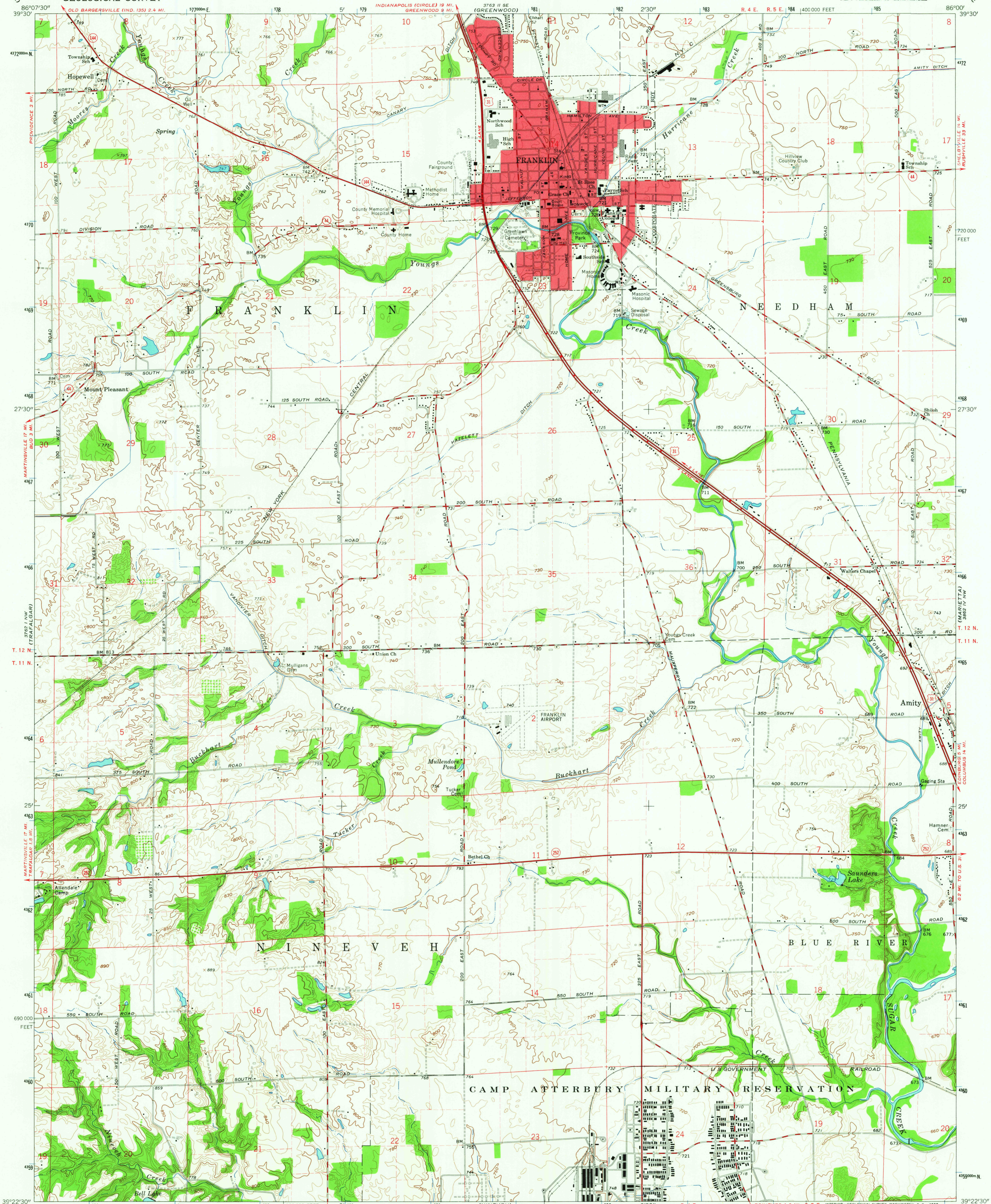
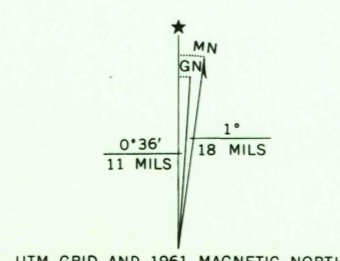


UNITED STATES  
DEPARTMENT OF THE INTERIOR  
GEOLOGICAL SURVEY

FRANKLIN QUADRANGLE  
INDIANA-JOHNSON CO.  
7.5 MINUTE SERIES (TOPOGRAPHIC)  
NE 1/4 FRANKLIN 15' QUADRANGLE



Mapped, edited, and published by the Geological Survey  
Revised in cooperation with State of Indiana  
Department of Conservation  
Control by USGS and USC&GS  
Planimetry by photogrammetric methods from aerial photographs taken  
1944. Topography by planimetric surveys 1946-47. Revised 1961  
Polyconic projection. 1927 North American datum  
10,000-foot grid based on Indiana coordinate system, east zone  
1000-meter Universal Transverse Mercator grid ticks,  
zone 16, shown in blue  
Fine red dashed lines indicate selected fence and field lines where  
generally visible on aerial photographs. This information is unchecked  
Red tint indicates area in which only landmark buildings are shown



SCALE 1:24,000  
CONTOUR INTERVAL 10 FEET  
DATUM IS MEAN SEA LEVEL

THIS MAP COMPLIES WITH NATIONAL MAP ACCURACY STANDARDS  
FOR SALE BY U. S. GEOLOGICAL SURVEY, WASHINGTON, D. C. 20242  
AND INDIANA DEPARTMENT OF NATURAL RESOURCES, INDIANAPOLIS, INDIANA 46204  
A FOLDER DESCRIBING TOPOGRAPHIC MAPS AND SYMBOLS IS AVAILABLE ON REQUEST

USGS  
Historical File  
Topographic Division

U.S.G.S.  
FILE COPY  
TOPOGRAPHIC DIVISION

ROAD CLASSIFICATION  
Heavy-duty Road Light-duty  
Medium-duty Unimproved dirt  
U.S. Route State Route

FRANKLIN, IND.  
NE 1/4 FRANKLIN 15' QUADRANGLE  
N3922.5-W8600/7.5  
1961  
AMS 3762 1 NE-SERIES V851

5125