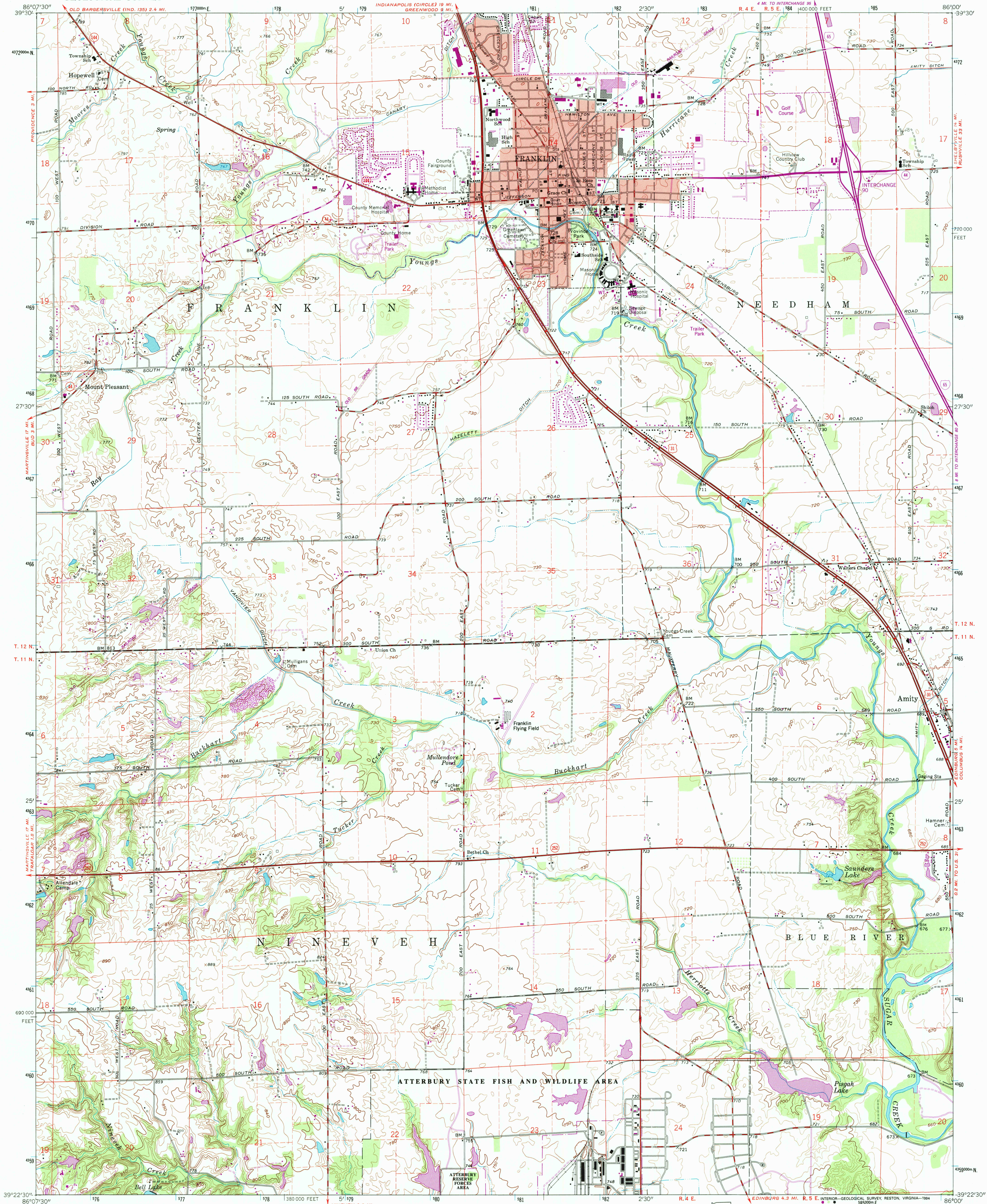


UNITED STATES
DEPARTMENT OF THE INTERIOR
GEOLOGICAL SURVEY

FRANKLIN QUADRANGLE
INDIANA—JOHNSON CO.
7.5 MINUTE SERIES (TOPOGRAPHIC)



Produced by the U. S. Geological Survey
Revised in cooperation with State of Indiana
Department of Natural Resources
Control by USGS and NOS/NOAA
Planimetry by photogrammetric methods from aerial photographs
taken 1944. Topography by planimetric surveys 1946-47. Revised 1961
Projection and 10,000-foot grid ticks: Indiana coordinate
system, east zone (transverse Mercator)
1000-meter Universal Transverse Mercator grid ticks, zone 16, shown in blue
1927 North American Datum (NAD 27)
North American Datum of 1983 (NAD 83) is shown by dashed corner ticks
The values of the shift between NAD 27 and NAD 83 for 7.5-minute
intersections are given in USGS Bulletin 1875
There may be private inholdings within the boundaries of
the National or State reservations shown on this map
Photinspected from 1992 source; no major culture or drainage
changes observed. Boundaries and names revised 1994

Revisions shown in purple compiled in cooperation with State of
Indiana agencies from aerial photographs taken 1984 and other
source data. This information not field checked. Map edited 1988

THIS MAP COMPLIES WITH NATIONAL MAP ACCURACY STANDARDS
FOR SALE BY U. S. GEOLOGICAL SURVEY, DENVER, COLORADO 80225 OR RESTON, VIRGINIA 22092,
AND INDIANA DEPARTMENT OF NATURAL RESOURCES, INDIANAPOLIS, INDIANA 46204
A FOLDER DESCRIBING TOPOGRAPHIC MAPS AND SYMBOLS IS AVAILABLE ON REQUEST

QUADRANGLE LOCATION

1	2	3
4	5	6
7	8	

ADJOINING 7.5' QUADRANGLE NAMES

ROAD CLASSIFICATION
Primary highway, hard surface
Secondary highway, hard surface
Light-duty road, hard or improved surface
Unimproved road
Interstate Route
U. S. Route
State Route

FRANKLIN, IND.
39086-D1-TF-024

1961
PHOTOREVISED 1988
MINOR REVISION 1994
DMA 3762 1 NE—SERIES V851

USGS 1994 HISTORICAL
MAP ARCHIVES
MAY 09 1994
REC'D FILE COPY