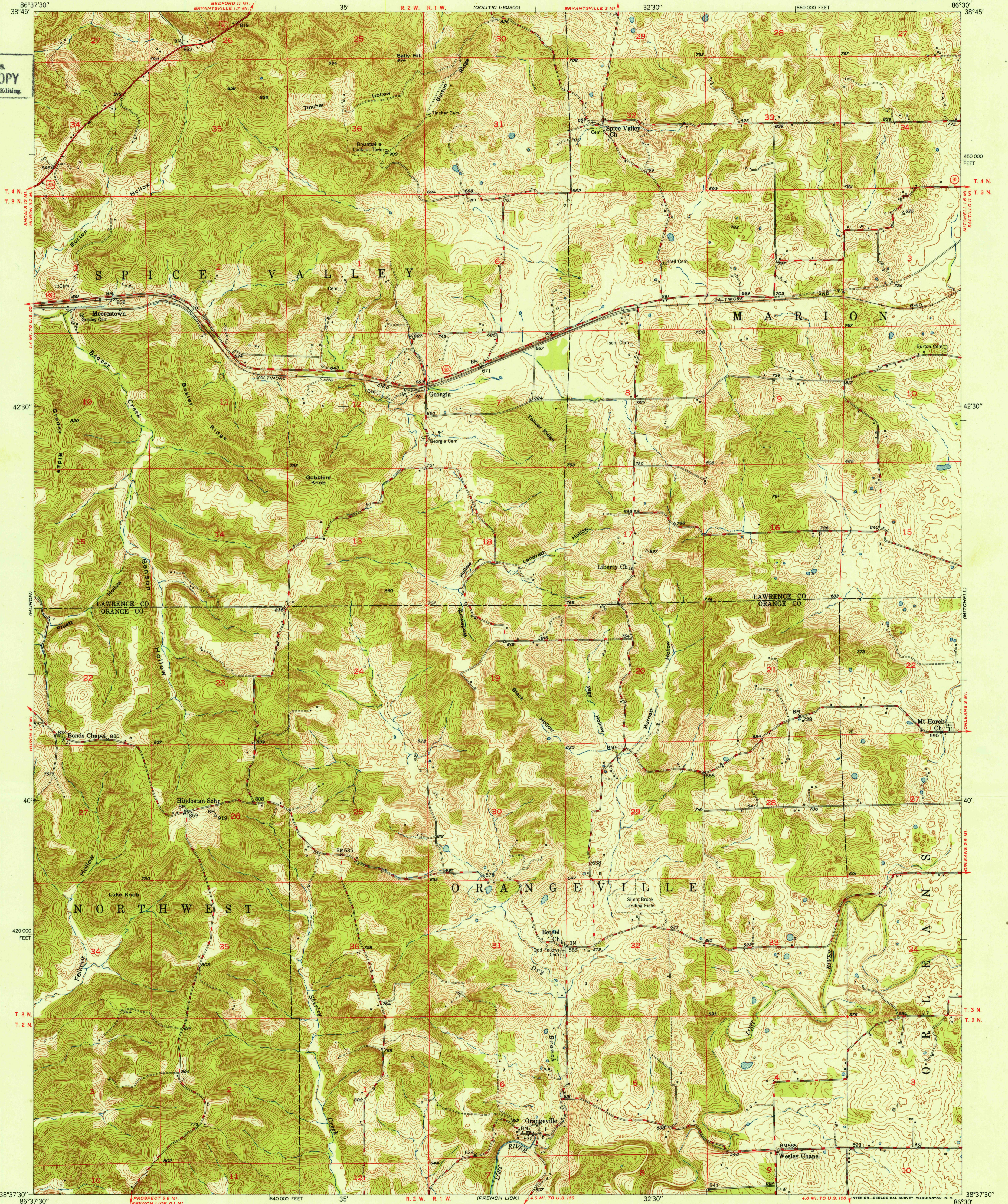
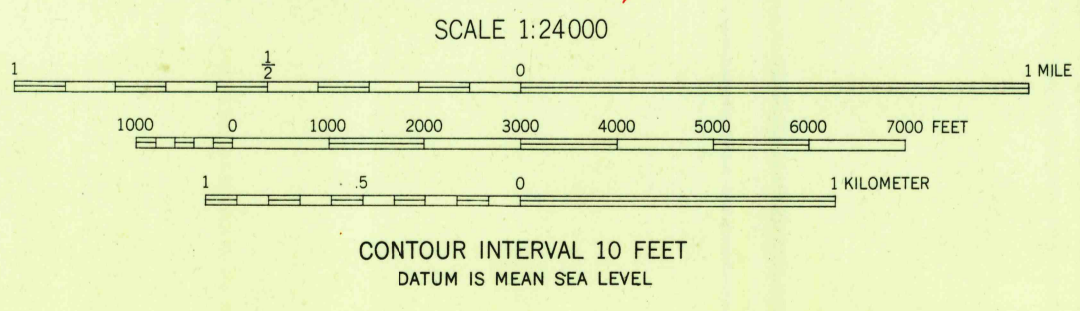


U.S.G.S.
FILE COPY
Inspection and Editing



Mapped, edited, and published by the Geological Survey
Control by USGS and USC&GS
Topography from aerial photographs by Ketch plottor
Aerial photographs taken 1946. Field check 1949
Polyconic projection. 1927 North American datum
10,000-foot grid based on Indiana coordinate system,
west zone



USGS
Historical File
Topographic Division

ROAD CLASSIFICATION

HARD-SURFACE ALL WEATHER ROADS	DRY WEATHER ROADS
Heavy-duty ——— 2 LANE IS LANE	Improved dirt ———
Medium-duty ——— 1 LANE IS LANE	Unimproved dirt ———
Loose-surface, graded, or narrow hard-surface - - - - -	
U. S. Route	State Route

U.S.G.S.
FILE COPY
Inspection and Editing

GEORGIA, IND.
N3837.5—W8630/7.5
EDITION OF 1951

2110