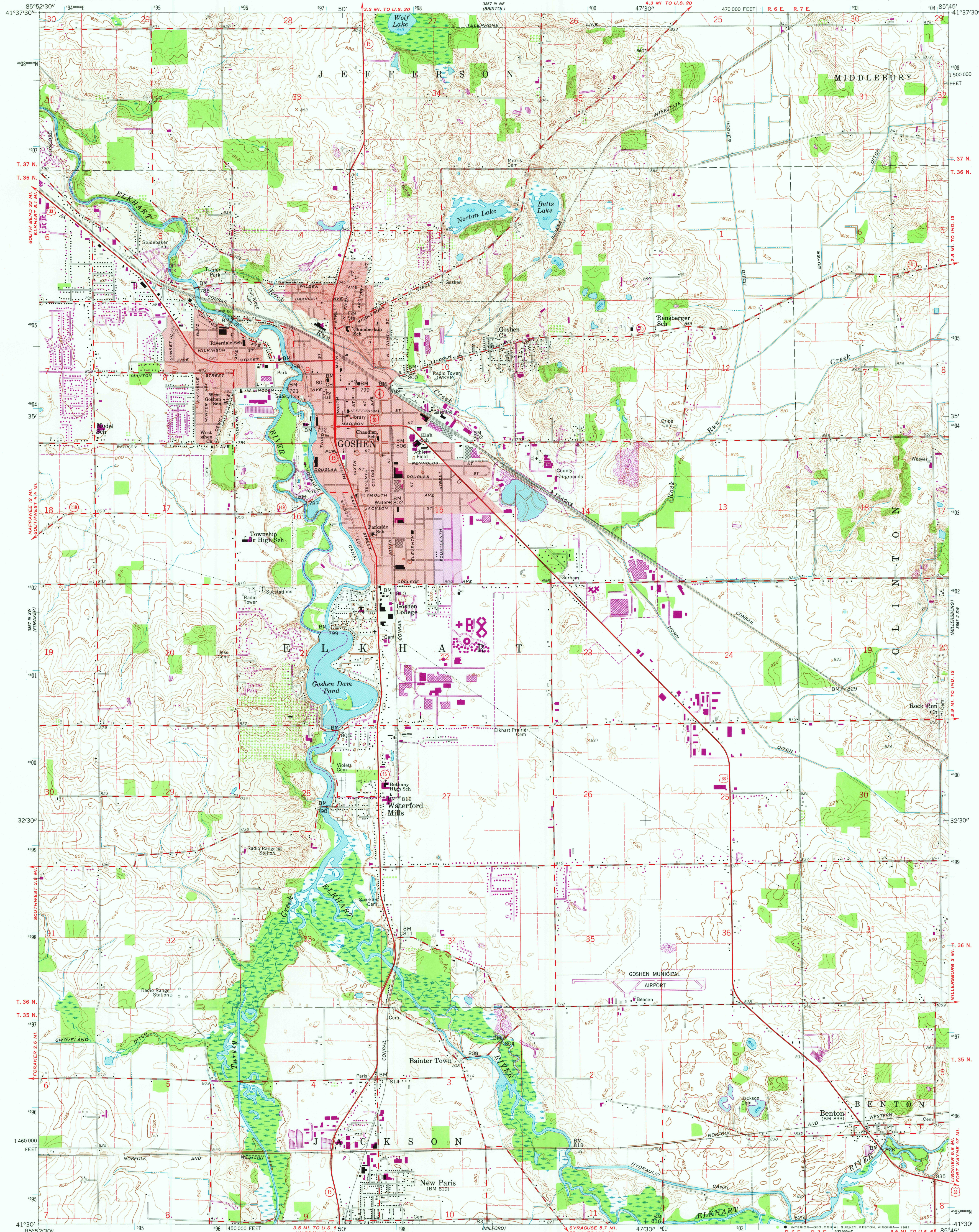
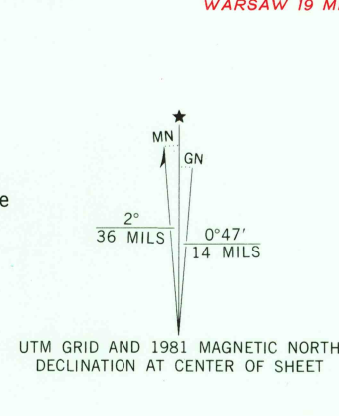


UNITED STATES
DEPARTMENT OF THE INTERIOR
GEOLOGICAL SURVEY

GOSHEN QUADRANGLE
INDIANA—ELKHART CO.
7.5 MINUTE SERIES (TOPOGRAPHIC)



Mapped, edited, and published by the Geological Survey
Control by USGS, NOS/NOAA, and Indiana Flood Control and
Water Resources Commission
Culture and drainage in part compiled from aerial photographs
taken 1957. Topography by planimetric surveys 1959
Polyconic projection. 10,000-foot grid ticks based on Indiana coordinate
system, east zone, 1000-meter Universal Transverse Mercator
grid ticks, zone 16, shown in blue. 1927 North American Datum
To place on the predicted North American Datum 1983 move
the projection lines 1 meter east as shown by dashed corner ticks
Fine red dashed lines indicate selected fence and field lines where
generally visible on aerial photographs. This information is unchecked
Red tint indicates areas in which only landmark buildings are shown



CONTOUR INTERVAL 5 FEET
NATIONAL GEODETIC VERTICAL DATUM OF 1929
THIS MAP COMPLIES WITH NATIONAL MAP ACCURACY STANDARDS
FOR SALE BY U.S. GEOLOGICAL SURVEY, RESTON, VIRGINIA 22092
AND INDIANA DEPARTMENT OF NATURAL RESOURCES, INDIANAPOLIS, INDIANA 46204
A FOLDER DESCRIBING TOPOGRAPHIC MAPS AND SYMBOLS IS AVAILABLE ON REQUEST

ROAD CLASSIFICATION
Heavy-duty ——— Light-duty ———
Medium-duty ——— Unimproved dirt ———
U.S. Route ——— State Route ———
GOSHEN, IND.
N4130-W8545/7.5
1959
PHOTO-REVISED 1981
DMA 3887 III SE-SERIES V851

MAR 26 1982