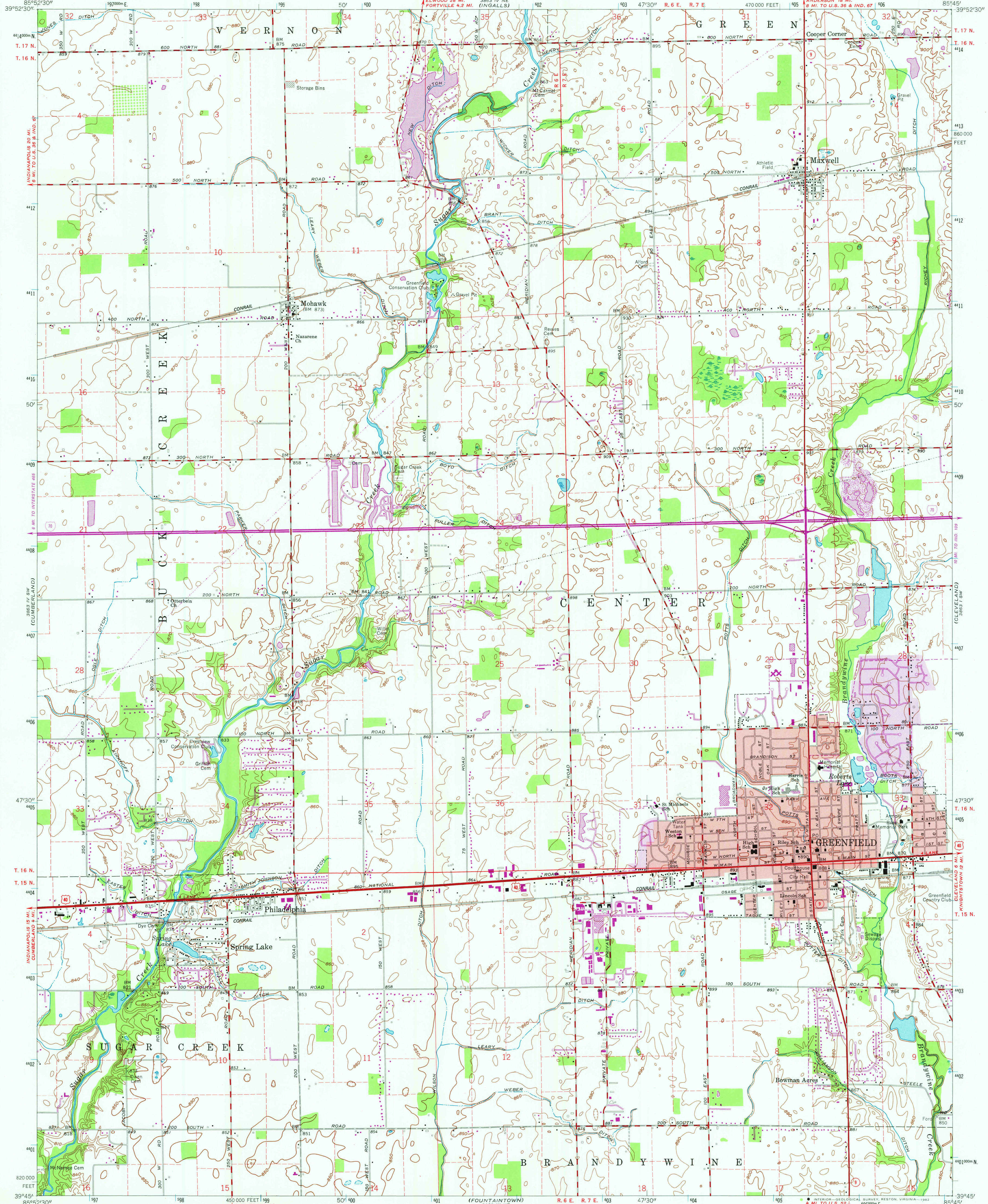


UNITED STATES
DEPARTMENT OF THE INTERIOR
GEOLOGICAL SURVEY

GREENFIELD QUADRANGLE
INDIANA—HANCOCK CO.
7.5 MINUTE SERIES (TOPOGRAPHIC)



Maped, edited, and published by the Geological Survey
Revised in cooperation with State of Indiana
Department of Conservation
Control by USGS, NOS/NOAA, and Indiana Flood Control and
Water Resources Commission
Planimetry by photogrammetric methods from aerial photographs
taken 1949. Topography by planimetric surveys 1952. Revised 1962
Polyconic projection. 10,000-foot grid ticks based on Indiana coordinate
system, east zone. 1000-meter Universal Transverse Mercator
grid ticks, zone 16, shown in blue. 1927 North American Datum.
To place on the predicted North American Datum 1983 move the
projection lines 2 meters south and 2 meters west as
shown by dashed corner ticks
Fine red dashed lines indicate selected fence and field lines where
generally visible on aerial photographs. This information is unchecked
Red tint indicates areas in which only landmark buildings are shown

SCALE 1:24,000
CONTOUR INTERVAL 10 FEET
NATIONAL GEODETIC VERTICAL DATUM OF 1929
1 MILE
1 KILOMETER
THIS MAP COMPLIES WITH NATIONAL MAP ACCURACY STANDARDS
FOR SALE BY U. S. GEOLOGICAL SURVEY, RESTON, VIRGINIA 22092
AND INDIANA DEPARTMENT OF NATURAL RESOURCES, INDIANAPOLIS, INDIANA 46204
A FOLDER DESCRIBING TOPOGRAPHIC MAPS AND SYMBOLS IS AVAILABLE ON REQUEST

ROAD CLASSIFICATION
Primary highway all weather, hard surface
Secondary highway, all weather, hard surface
Light-duty road, all weather, improved surface
Unimproved road, fair or dry weather
Interstate Route
U. S. Route
State Route

GREENFIELD, IND.
N3945—W8545/7.5
1962
PHOTOREVISED 1981
DMA 3863 IV SE—SERIES V851

Revisions shown in purple and woodland compiled in
cooperation with State of Indiana agencies from aerial
photographs taken 1979 and other sources. This
information not field checked. Map edited 1981

MAR 26 1982