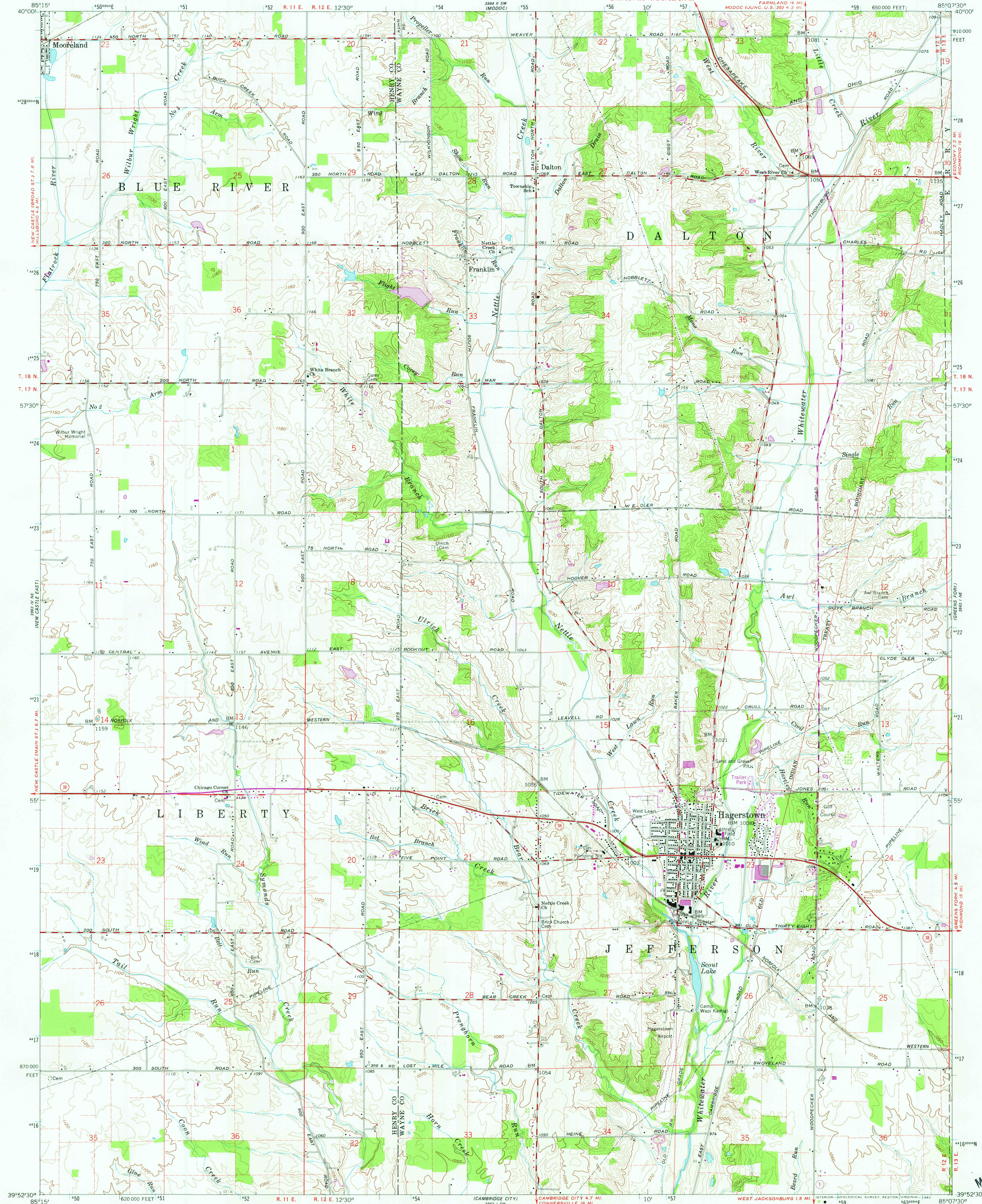


UNITED STATES  
DEPARTMENT OF THE INTERIOR  
GEOLOGICAL SURVEY

STATE OF INDIANA  
INDIANA DEPARTMENT OF CONSERVATION  
INDIANAPOLIS, INDIANA

HAGERSTOWN QUADRANGLE  
INDIANA  
7.5 MINUTE SERIES (TOPOGRAPHIC)



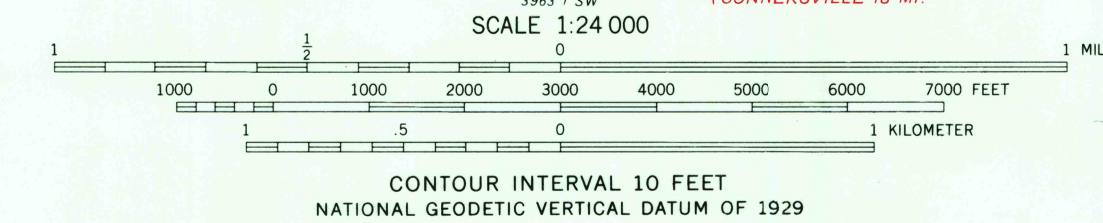
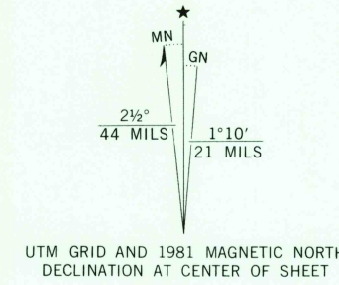
Mapped, edited, and published by the Geological Survey  
Control by USGS and NOS/NOAA

Topography by photogrammetric methods from aerial photographs  
taken 1958. Field checked 1960

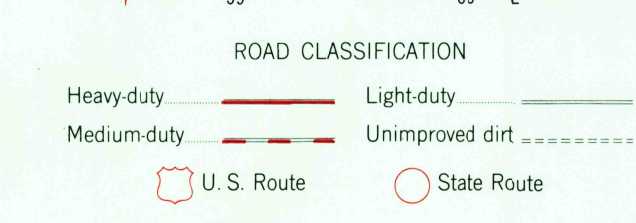
Polyconic projection. 10,000-foot grid ticks based on Indiana coordinate  
system, east zone. 1000-meter Universal Transverse Mercator grid  
ticks, zone 16, shown in blue. 1927 North American Datum  
To place on the predicted North American Datum 1983 move  
the projection lines 2 meters south and 3 meters west as  
shown by dashed corner ticks

Fine red dashed lines indicate selected fence and field lines where  
generally visible on aerial photographs. This information is unchecked

Revisions shown in purple and woodland compiled in  
cooperation with State of Indiana agencies from aerial  
photographs taken 1980 and other sources. This  
information not field checked. Map edited 1981



THIS MAP COMPLIES WITH NATIONAL MAP ACCURACY STANDARDS  
FOR SALE BY U. S. GEOLOGICAL SURVEY, RESTON, VIRGINIA 22092  
AND INDIANA DEPARTMENT OF NATURAL RESOURCES, INDIANAPOLIS, INDIANA 46204  
A FOLDER DESCRIBING TOPOGRAPHIC MAPS AND SYMBOLS IS AVAILABLE ON REQUEST



HAGERSTOWN, IND.  
N 3952.5 - W 8507.5/7.5

1960  
PHOTOREVISED 1981  
DMA 3963 1 NW-SERIES V851

MAY 25 1982