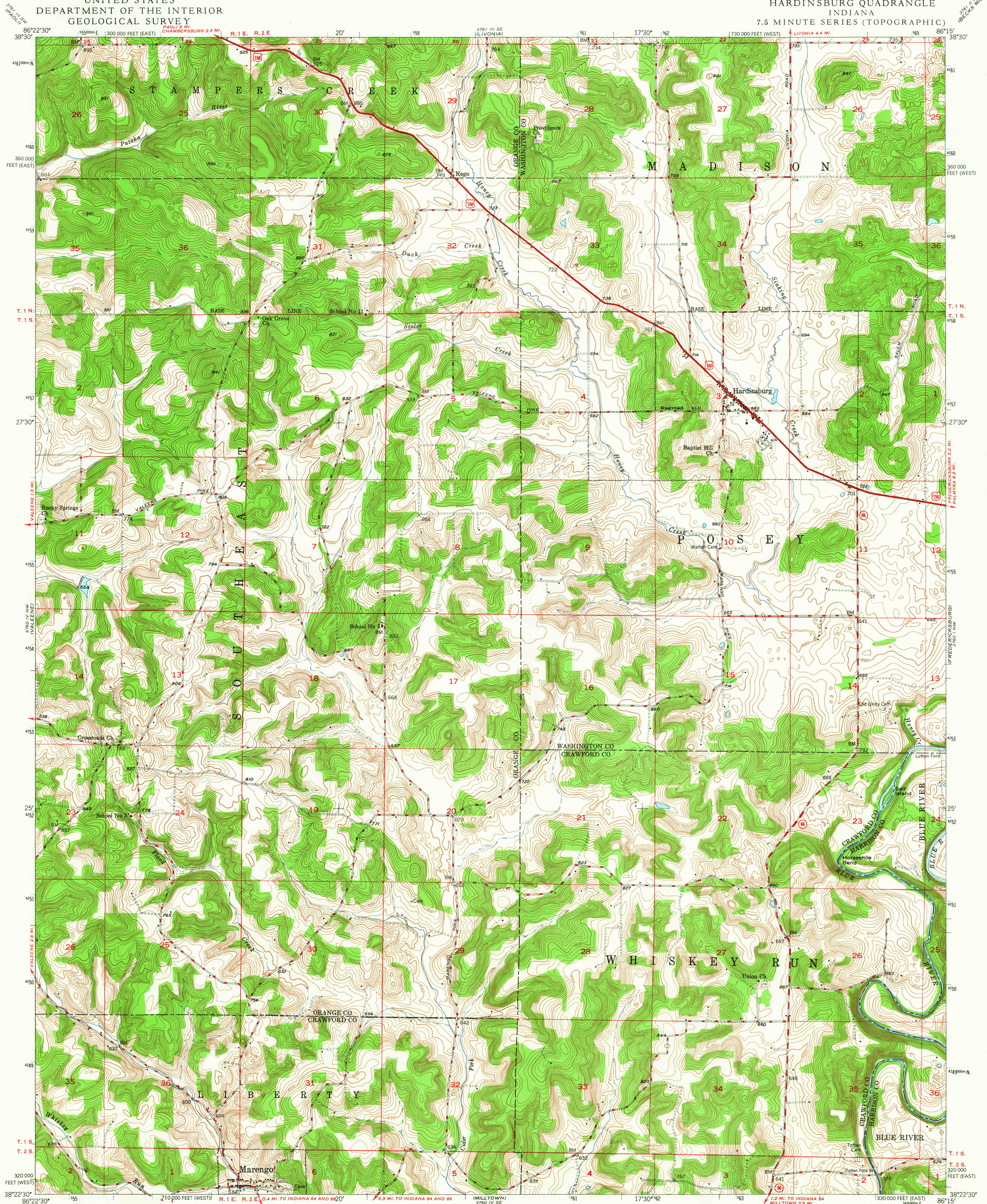


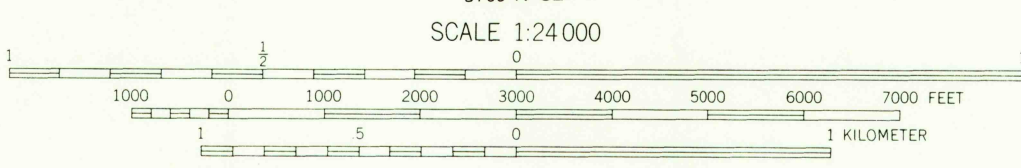
UNITED STATES  
DEPARTMENT OF THE INTERIOR  
GEOLOGICAL SURVEY

HARDINSBURG QUADRANGLE  
INDIANA  
7.5 MINUTE SERIES (TOPOGRAPHIC)



Mapped, edited, and published by the Geological Survey  
Control by USGS and USC&GS  
Culture and drainage in part compiled from  
aerial photographs taken 1938 and 1940  
Topography by plane-table methods 1947  
Polyconic projection. 1927 North American datum  
10,000-foot grids based on Indiana coordinate system,  
east and west zones  
1000-meter Universal Transverse Mercator grid ticks,  
zone 16, shown in blue

UTM GRID AND 1947 MAGNETIC NORTH  
DECLINATION AT CENTER OF SHEET



USGS  
Historical File  
Topographic Division

ROAD CLASSIFICATION  
HARD-SURFACE ALL WEATHER ROADS DRY WEATHER ROADS  
Heavy-duty ——— **LANE 1 LANE** Improved dirt ———  
Medium-duty ——— **LANE 1 LANE** Unimproved dirt ———  
Loose-surface, graded, or narrow hard-surface ———  
U. S. Route State Route

THIS MAP COMPLIES WITH NATIONAL MAP ACCURACY STANDARDS  
FOR SALE BY U. S. GEOLOGICAL SURVEY, WASHINGTON, D. C. 20542  
AND INDIANA DEPARTMENT OF CONSERVATION, INDIANAPOLIS, INDIANA  
A FOLDER DESCRIBING TOPOGRAPHIC MAPS AND SYMBOLS IS AVAILABLE ON REQUEST

U.S.G.S.  
FILE COPY  
TOPOGRAPHIC DIVISION

HARDINSBURG, IND.  
N3822.5-W8615.7.5  
1947  
AMS 3760 IV NE-SERIES V851

NOV 23 1965  
2210