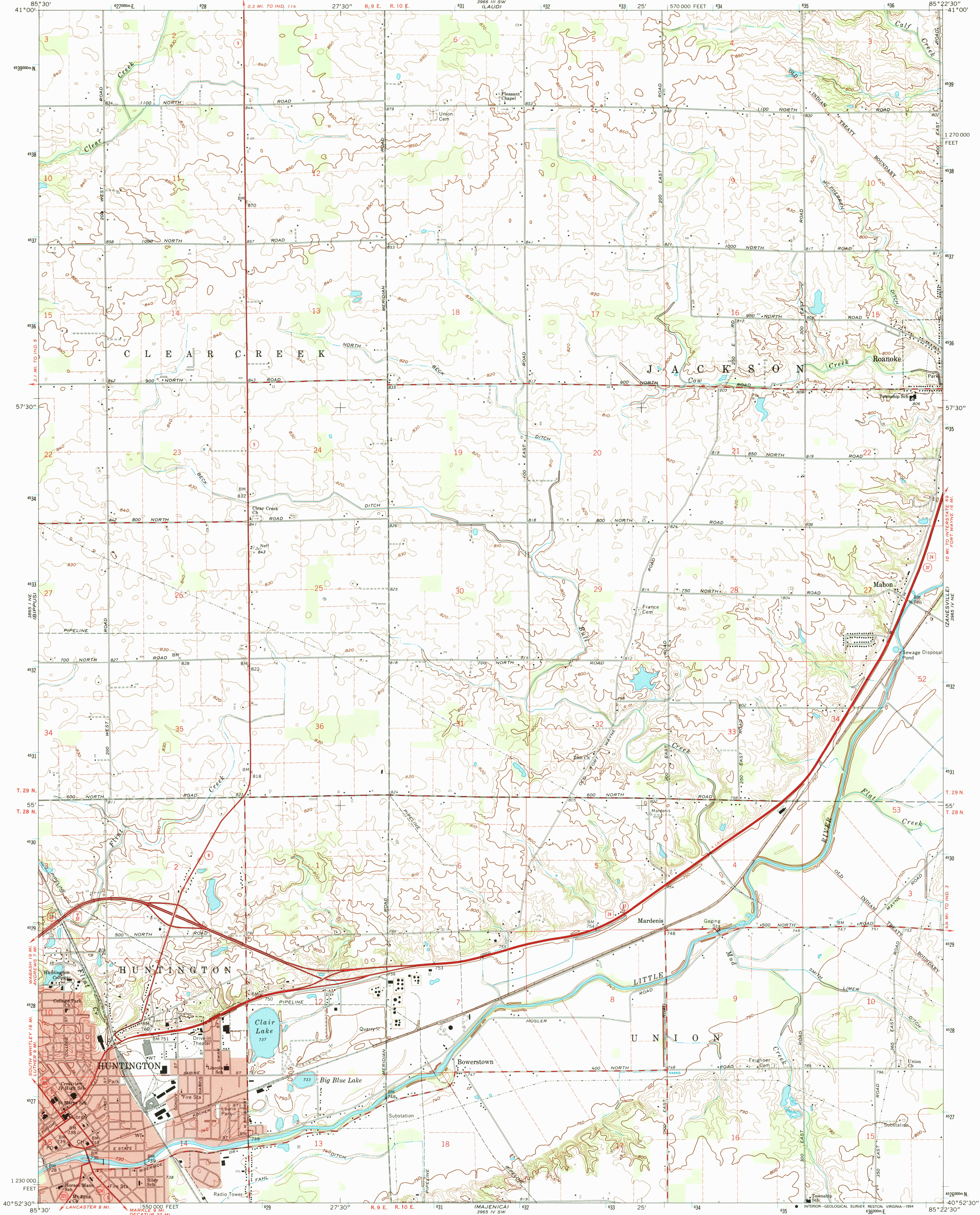


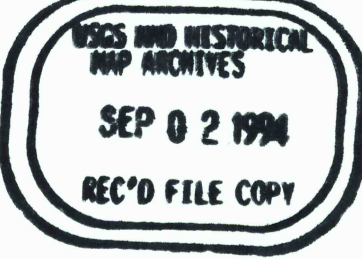
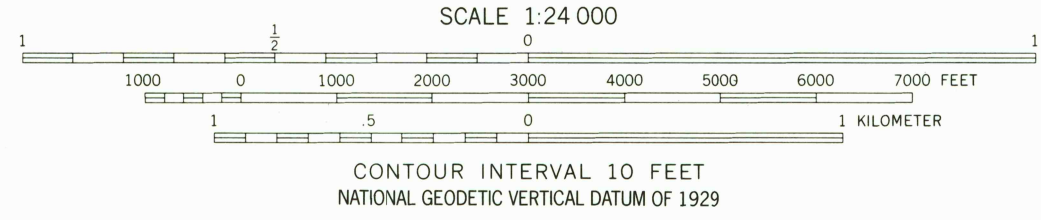
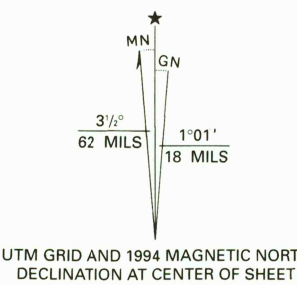
UNITED STATES  
DEPARTMENT OF THE INTERIOR  
GEOLOGICAL SURVEY

STATE OF INDIANA  
DEPARTMENT OF NATURAL RESOURCES  
INDIANAPOLIS, INDIANA

HUNTINGTON QUADRANGLE  
INDIANA—HUNTINGTON CO.  
7.5 MINUTE SERIES (TOPOGRAPHIC)



Produced by the U. S. Geological Survey  
Control by USGS, NOS/NOAA, and Indiana Flood Control  
and Water Resources Commission  
Planimetry by photogrammetric methods from aerial photographs  
taken 1948. Topography by planimetric surveys 1955 and 1956  
Revised from aerial photographs taken 1971. Field checked 1972  
North American Datum of 1927 (NAD 27). Projection and  
10 000-foot ticks; Indiana coordinate system, east zone  
(transverse Mercator)  
Blue 1000-meter Universal Transverse Mercator grid ticks, zone 16  
North American Datum of 1983 (NAD 83) is shown by dashed  
corner ticks. The values of the shift between NAD 27 and NAD 83  
for 7.5-minute intersections are obtainable from National Geodetic  
Survey NADCON software  
Red tint indicates areas in which only landmark buildings are shown  
Fine red dashed lines indicate selected fence and field lines where  
generally visible on aerial photographs. This information is unchecked  
Photinspected from 1992 source; no major culture or drainage  
changes observed. Names revised and boundaries verified 1994



ROAD CLASSIFICATION  
Primary highway, hard surface  
Secondary highway, hard surface  
Light-duty road, hard or improved surface  
Unimproved road  
Interstate Route  
U. S. Route  
State Route

HUNTINGTON, IND.  
40085-H4-TF-024  
1972  
MINOR REVISION 1994  
DMA 3965 IV NW-SERIES V851

THIS MAP COMPLIES WITH NATIONAL MAP ACCURACY STANDARDS  
FOR SALE BY U.S. GEOLOGICAL SURVEY, DENVER, COLORADO 80225, OR RESTON, VIRGINIA 22092  
AND INDIANA DEPARTMENT OF NATURAL RESOURCES, INDIANAPOLIS, INDIANA 46204  
A FOLDER DESCRIBING TOPOGRAPHIC MAPS AND SYMBOLS IS AVAILABLE ON REQUEST