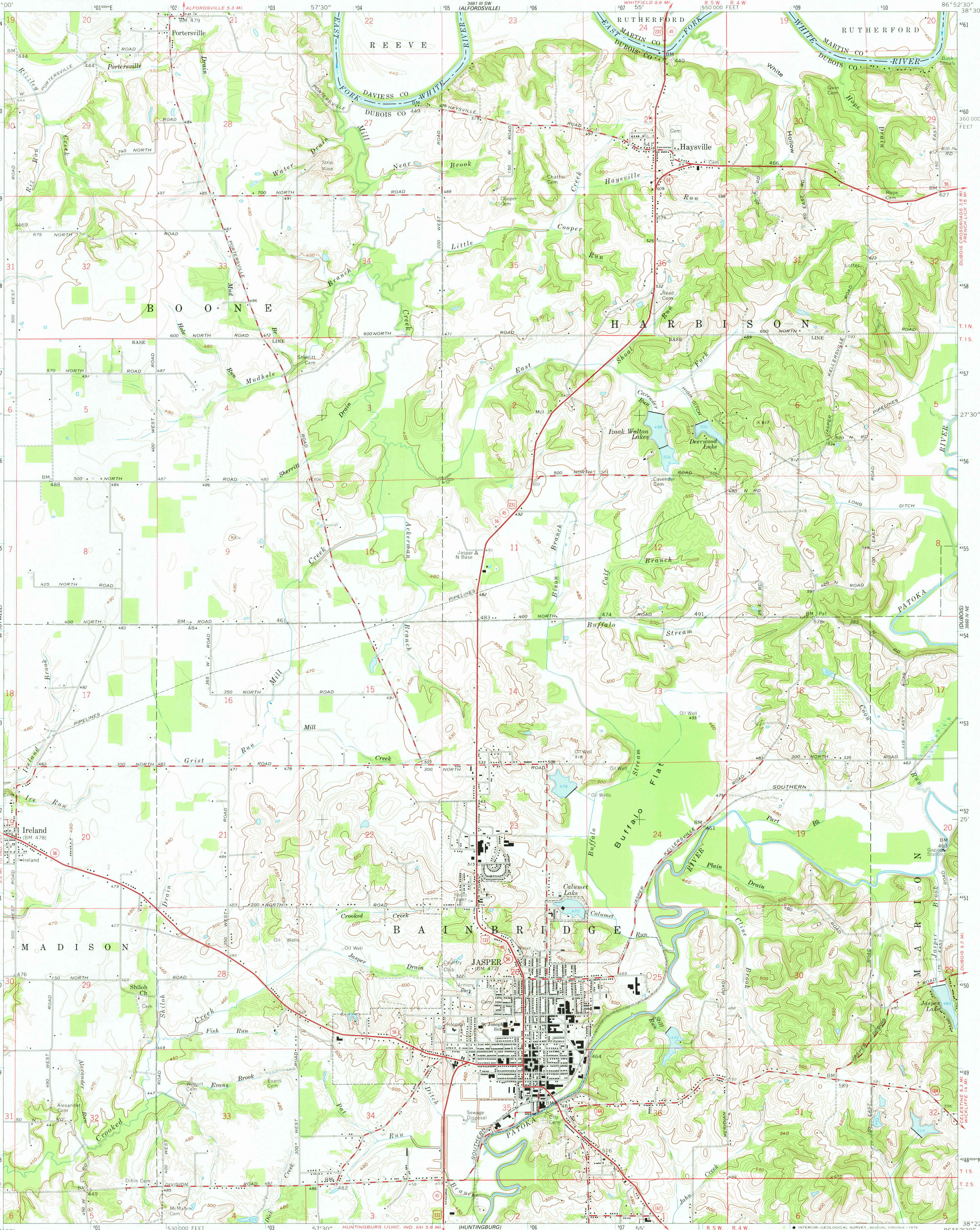


UNITED STATES  
DEPARTMENT OF THE INTERIOR  
GEOLOGICAL SURVEY

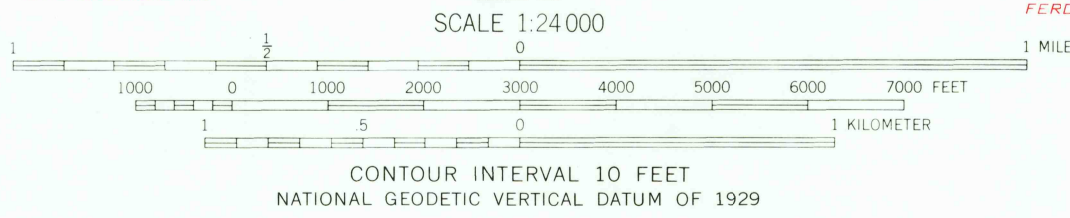
STATE OF INDIANA  
INDIANA DEPARTMENT OF CONSERVATION  
INDIANAPOLIS, INDIANA

JASPER QUADRANGLE  
INDIANA  
7.5 MINUTE SERIES (TOPOGRAPHIC)



Maped, edited, and published by the Geological Survey  
Control by USGS, USC&GS, and Indiana Flood Control and  
Water Resources Commission  
Topography by planetable surveys 1942-1943. Revised 1960  
Polyconic projection. 1927 North American datum  
10,000-foot grid based on Indiana coordinate system, west zone  
1000-meter Universal Transverse Mercator grid ticks,  
zone 16, shown in blue

UTM GRID and 1960 MAGNETIC NORTH  
DECLINATION at CENTER of SHEET



THIS MAP COMPLIES WITH NATIONAL MAP ACCURACY STANDARDS  
FOR SALE BY U. S. GEOLOGICAL SURVEY, RESTON, VIRGINIA 22092  
AND INDIANA DEPARTMENT OF NATURAL RESOURCES, INDIANAPOLIS, INDIANA 46204  
A FOLDER DESCRIBING TOPOGRAPHIC MAPS AND SYMBOLS IS AVAILABLE ON REQUEST



ROAD CLASSIFICATION  
Heavy-duty ——— Light-duty ———  
Medium-duty ——— Unimproved dirt ———  
U. S. Route ——— State Route ———

USGS  
Historical File  
Topographic Division

JASPER, IND.  
N3822.5-W8652.5/7.5

1960  
AMS 3660 IV NW-SERIES V851

DEC 08 1976  
2400