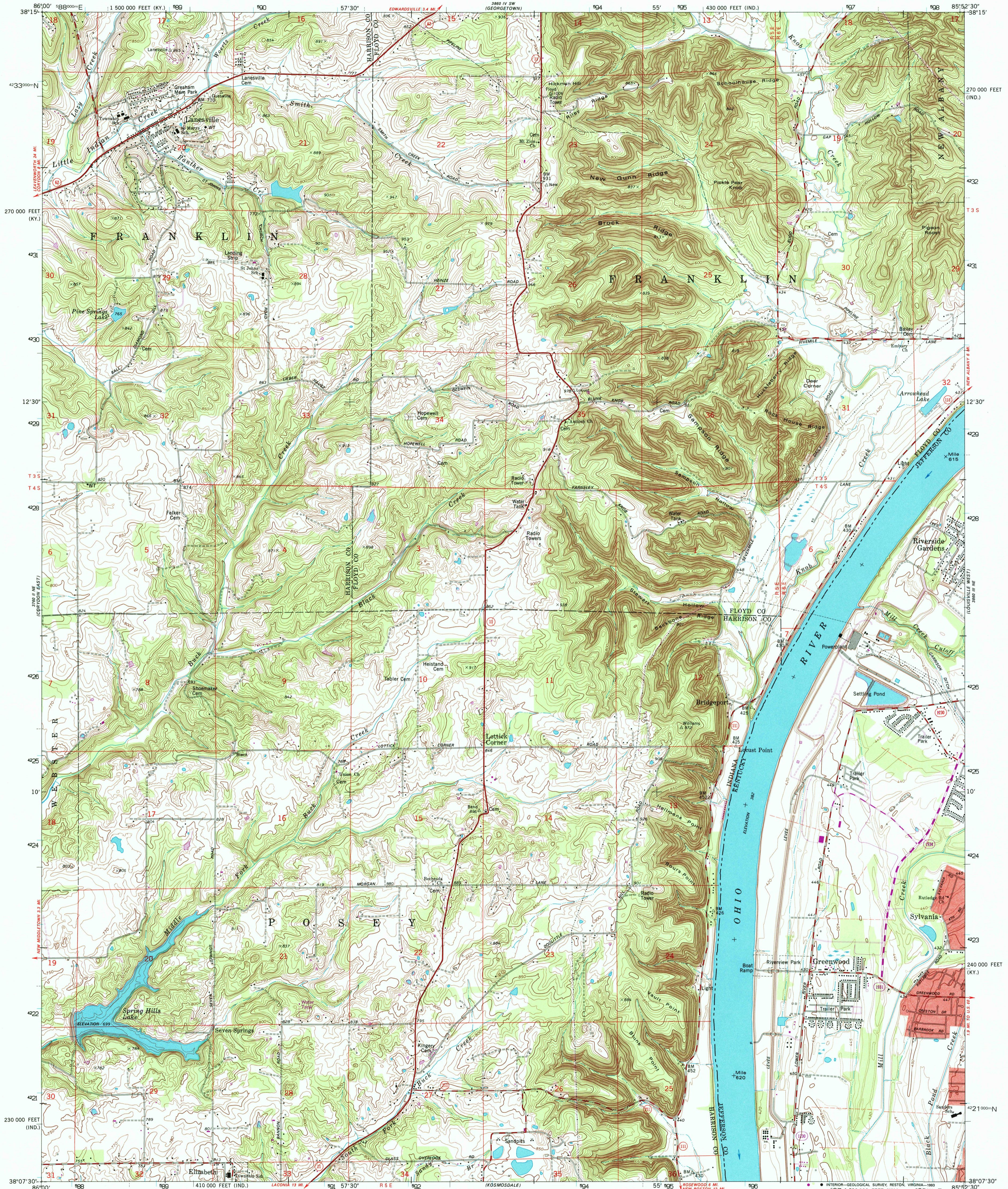
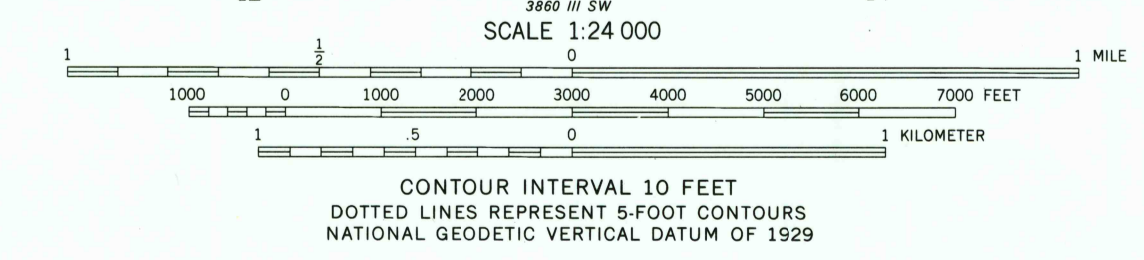
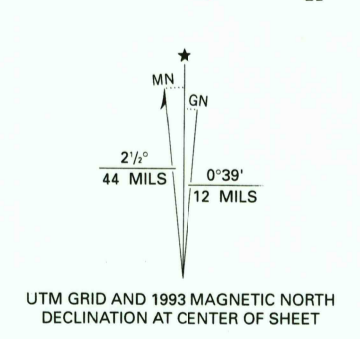


UNITED STATES
DEPARTMENT OF THE INTERIOR
GEOLOGICAL SURVEY

LANESVILLE QUADRANGLE
INDIANA-KENTUCKY
7.5 MINUTE SERIES (TOPOGRAPHIC)
NW/4 KOSMOSDALE 15' QUADRANGLE



Mapped by the Army Map Service and the Geological Survey
Edited and published by the Geological Survey
in cooperation with Kentucky Geological Survey
Control by USGS, NOS/NOAA and USCE
Topography by photogrammetric methods from aerial photographs
taken 1948. Field checked 1950. Revised from aerial photographs
taken 1979. Field checked 1979. Map edited 1982
Projection: Indiana coordinate system, east zone
(transverse Mercator)
10,000-foot grid ticks: Indiana coordinate system,
east zone and Kentucky coordinate system, north zone
100-meter Universal Transverse Mercator grid ticks, zone 16, shown in blue
1927 North American Datum (NAD 27)
North American Datum of 1983 (NAD 83) is shown by dashed corner ticks
The values of the shift between NAD 27 and NAD 83 for 7.5-minute
intersections are given in USGS Bulletin 1875
There may be private inholdings within the boundaries of
the National or State reservations shown on this map
Red tint indicates areas in which only landmark buildings are shown
Photorevised from 1992 source, no major culture or drainage
changes observed. Boundaries and names revised 1993



THIS MAP COMPLIES WITH NATIONAL MAP ACCURACY STANDARDS
FOR SALE BY U.S. GEOLOGICAL SURVEY, DENVER, COLORADO 80225 OR RESTON, VIRGINIA 22092,
INDIANA DEPARTMENT OF NATURAL RESOURCES, INDIANAPOLIS, INDIANA 46204,
KENTUCKY GEOLOGICAL SURVEY, LEXINGTON, KENTUCKY 40506,
AND KENTUCKY DEPARTMENT OF COMMERCE, FRANKFORT, KENTUCKY 40601
A FOLDER DESCRIBING TOPOGRAPHIC MAPS AND SYMBOLS IS AVAILABLE ON REQUEST

ROAD CLASSIFICATION

Primary highway, hard surface
Secondary highway, hard surface
Light-duty road, hard or improved surface
Unimproved road

Interstate Route
U.S. Route
State Route

LANESVILLE, IND.-KY.
NW/4 KOSMOSDALE 15' QUADRANGLE
38085-B8-TF-024

1985
PHOTOREVISED 1987
MINOR REVISION 1993
DMA 3860 III NW-SERIES V851

DEC 1993

