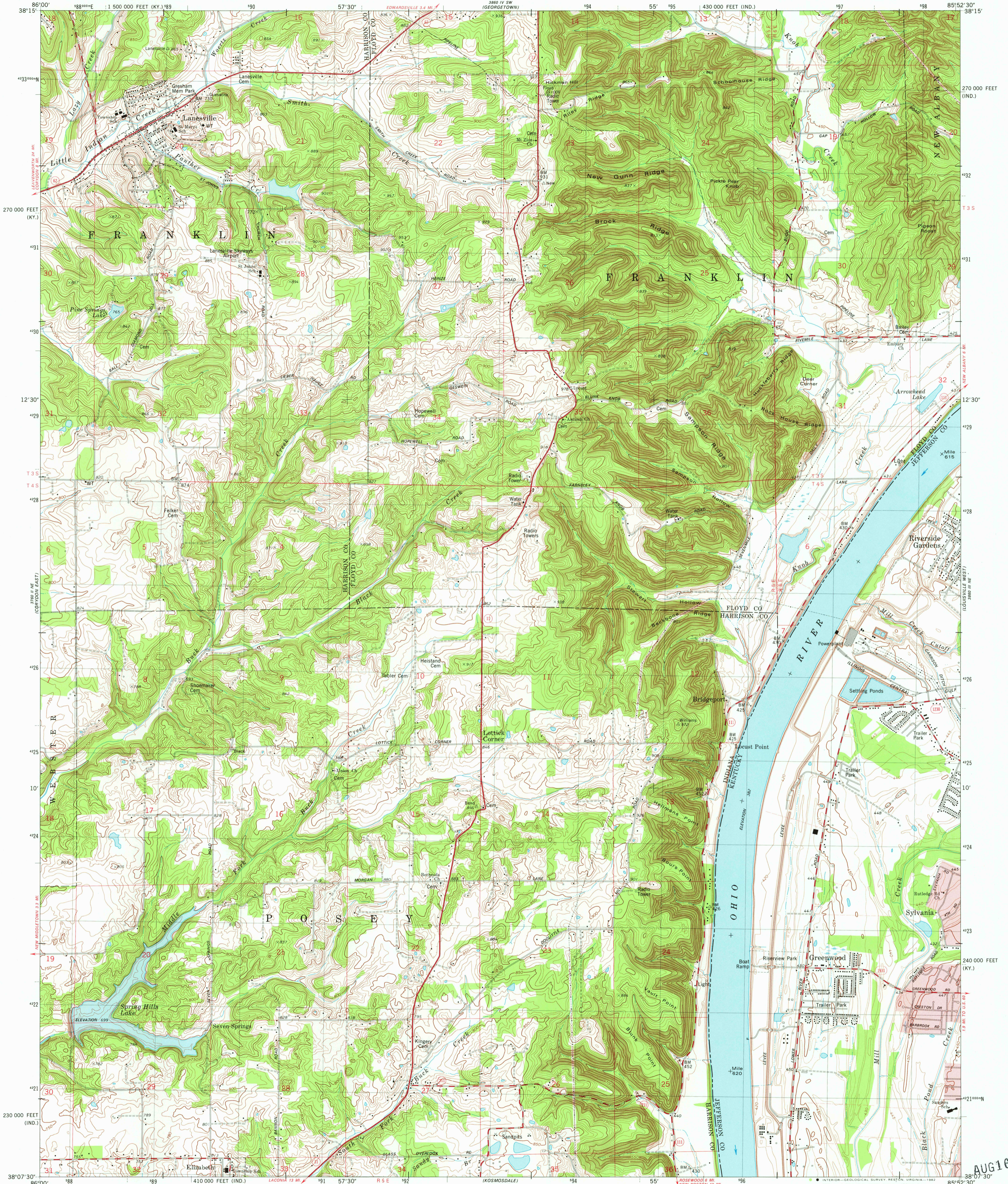
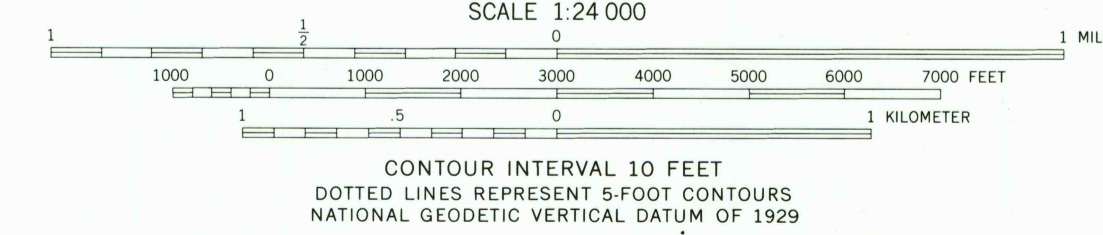
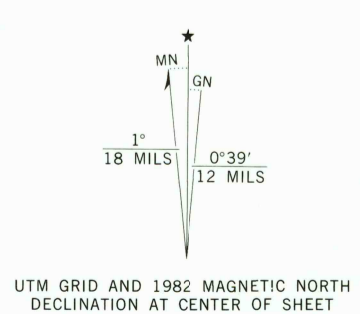


UNITED STATES
DEPARTMENT OF THE INTERIOR
GEOLOGICAL SURVEY

LANESVILLE QUADRANGLE
INDIANA-KENTUCKY
7.5 MINUTE SERIES (TOPOGRAPHIC)
NW/4 KOSMOSDALE 15' QUADRANGLE



Mapped by the Army Map Service and the Geological Survey
Edited and published by the Geological Survey
in cooperation with Kentucky Geological Survey
Control by USGS, NOS/NOAA, and USCE
Topography by photogrammetric methods from aerial photographs
taken 1949. Field checked 1950. Revised from aerial photographs
taken 1978. Field checked 1979. Map edited 1982
Polyconic projection. 10,000-foot grid ticks based on Indiana
coordinate system, east zone, and Kentucky coordinate
system, north zone
1000-meter Universal Transverse Mercator grid, zone 16
1927 North American Datum
To place on the predicted North American Datum 1983
move the projection lines 3 meters south and
2 meters west as shown by dashed corner ticks
Red tint indicates areas in which only landmark buildings are shown
The state boundary as shown represents the approximate position
of the low water line as determined from U. S. Corps of Engineers
Ohio River charts, surveyed 1912, and supplementary information



THIS MAP COMPLIES WITH NATIONAL MAP ACCURACY STANDARDS
FOR SALE BY U. S. GEOLOGICAL SURVEY, RESTON, VIRGINIA 22092,
INDIANA DEPARTMENT OF NATURAL RESOURCES, INDIANAPOLIS, INDIANA 46204,
KENTUCKY GEOLOGICAL SURVEY, LEXINGTON, KENTUCKY 40506,
AND KENTUCKY DEPARTMENT OF COMMERCE, FRANKFORT, KENTUCKY 40601
A FOLDER DESCRIBING TOPOGRAPHIC MAPS AND SYMBOLS IS AVAILABLE ON REQUEST



ROAD CLASSIFICATION
Primary highway, hard surface
Secondary highway, hard surface
Light-duty road, hard or improved surface
Unimproved road
Interstate Route
U. S. Route
State Route

LANESVILLE, IND.-KY.
NW/4 KOSMOSDALE 15' QUADRANGLE
N3807.5-W8552.5/7.5
1982
DMA 3860 III NW-SERIES V851

AUG 16 1982

230