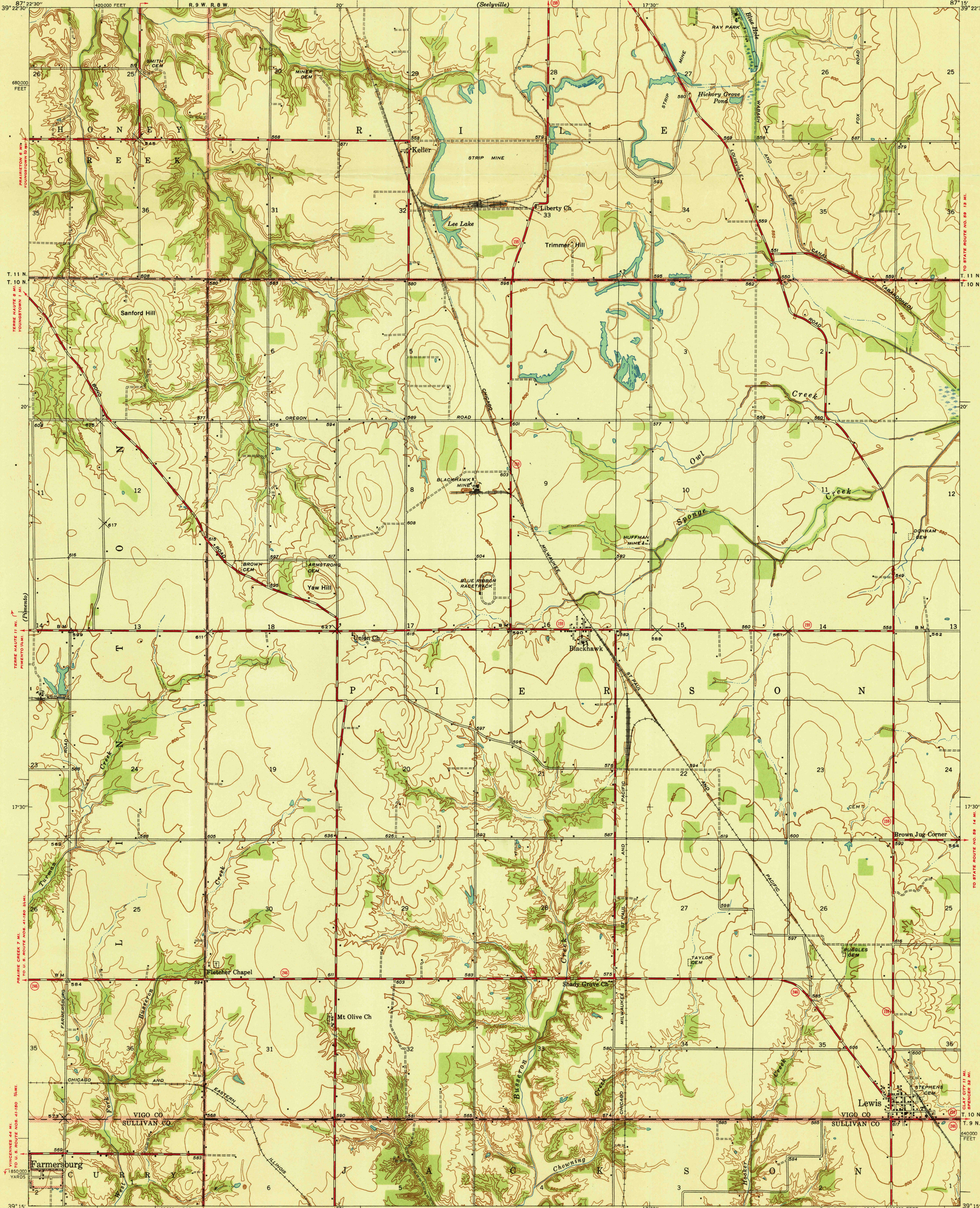


UNITED STATES
DEPARTMENT OF THE INTERIOR
GEOLOGICAL SURVEY

U. S. G. S.
FILE COPY

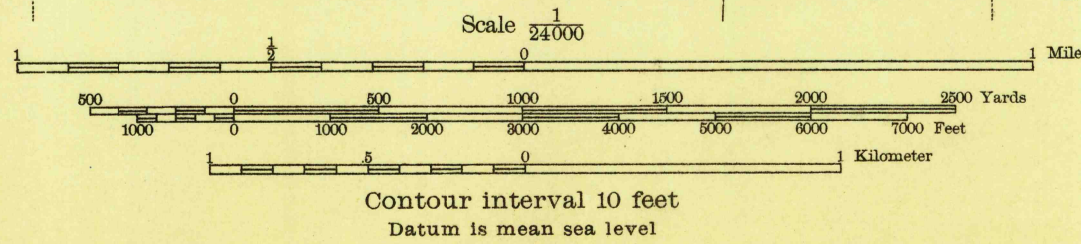
INDIANA
LEWIS QUADRANGLE



Albert Pike, Division Engineer
Topography by A. G. Kirk
Surveyed in 1938-39

R. 9 W. R. 8 W.
MARTS 2 1/2 MI.
LEWIS 6 1/2 MI.

TRUE NORTH
MAGNETIC NORTH
APPROXIMATE MEAN
DECLINATION, 1939



USGS
Historical File
Topographic Division

ROUTES USUALLY TRAVELED
HARD IMPROVED SURFACES
OTHER SURFACE IMPROVEMENTS
1940
② U. S. ROUTE
③ STATE ROUTE

Preliminary edition 1940
Polyconic projection. 1927 North American datum
5000 yard grid based on U. S. zone system, C
10000 foot grid based on Indiana (West)
rectangular coordinate system
MARTS 2 1/2 MI.
MYMERA 5 MI.

LEWIS, IND.
N3915-W8715/7.5

OCT 28 1940

U. S. G. S.
FILE COPY
Inspection and Editing