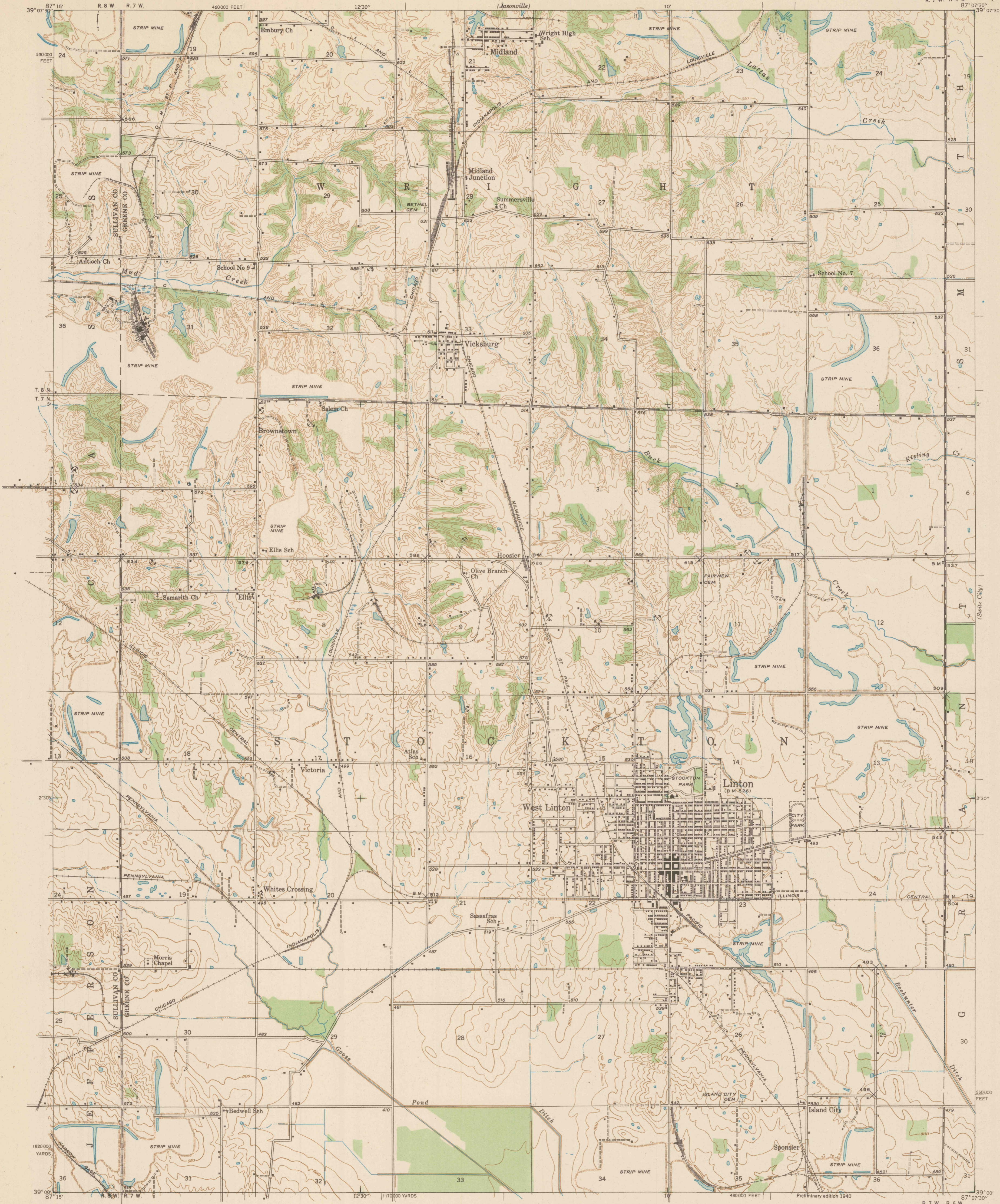
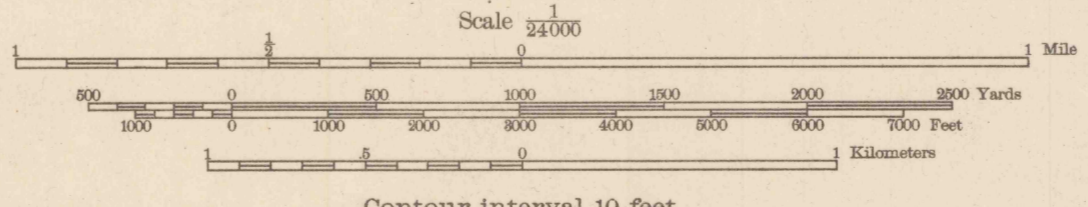


(Coal City)



Albert Pike, Division Engineer  
Topography by Crawford Dickey,  
R. F. Hamke, and G. F. Westinghouse  
Surveyed in 1938

TRUE NORTH  
MAGNETIC NORTH  
APPROXIMATE MEAN  
DECLINATION, 1938



Contour interval 10 feet  
Datum is mean sea level

1st Proof

MAY 10 1940

Polyconic projection. 1927 North American datum  
5000 yard grid based on U. S. zone system, C  
10000 foot grid based on Indiana (West)  
rectangular coordinate system

LINTON, IND.  
N 3900-W 8707.5/7.5

Linton, Ind.