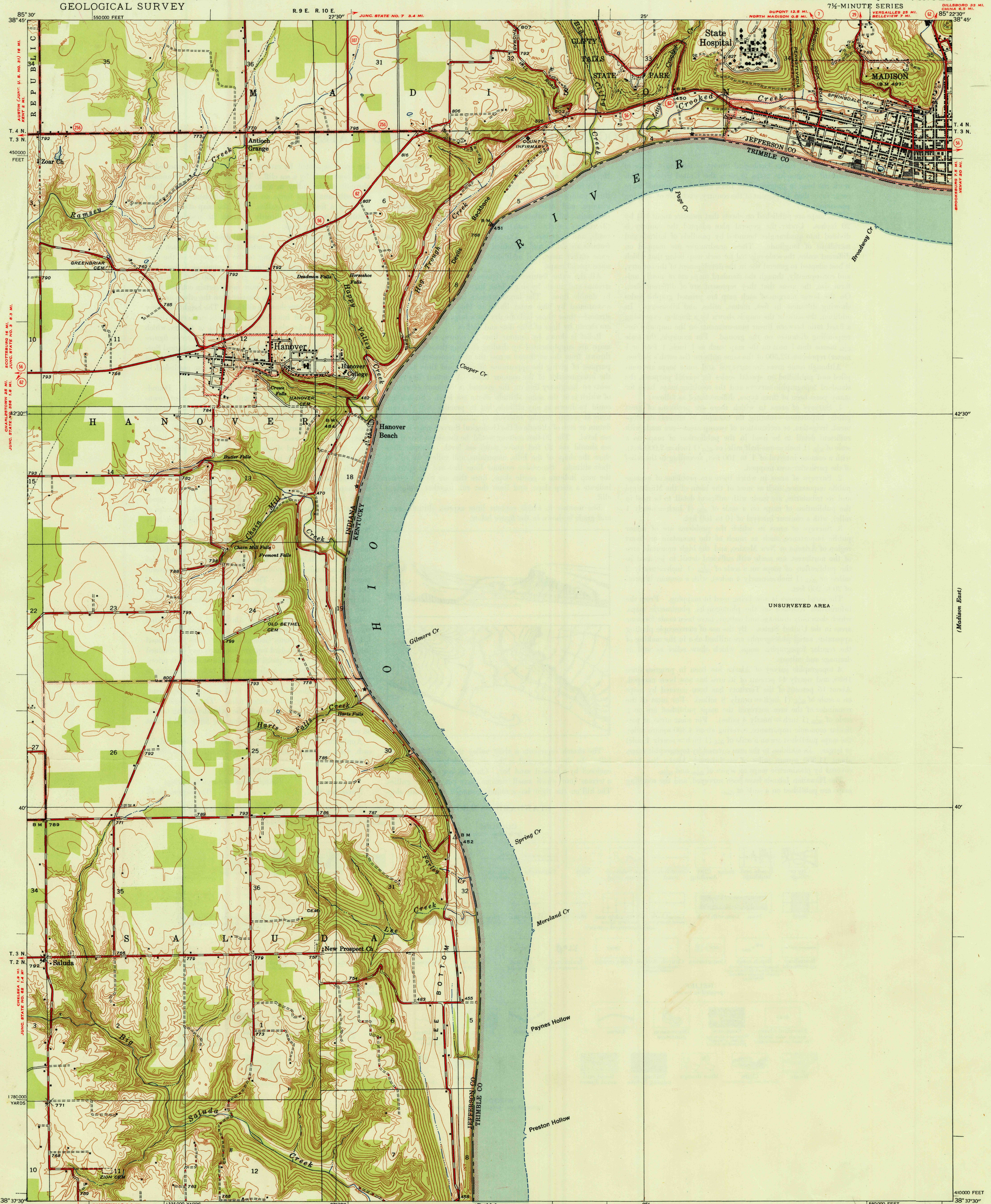


UNITED STATES
DEPARTMENT OF THE INTERIOR
GEOLOGICAL SURVEY

STATE OF INDIANA
INDIANA DEPARTMENT OF CONSERVATION
INDIANAPOLIS, INDIANA

U. S. G. S.
FILE COPY
Inspection and Editing.

INDIANA-KENTUCKY
MADISON WEST QUADRANGLE
7 1/2-MINUTE SERIES



Albert Pike, Division Engineer
Topography by G. F. Westinghouse
Surveyed in 1938

ROAD CLASSIFICATION
Dependable hard surface
Heavy-duty road
Secondary hard surface
All-weather road
Dirt road
More than two lanes indicated along road with tick at point of change
INFORMATION FURNISHED BY INDIANA HIGHWAY COMMISSION

APPROXIMATE MEAN
DECLINATION, 1938

Scale 1:24,000
Contour interval 10 feet
Datum is mean sea level

USGS
Historical File
Topographic Division

U. S. G. S.
FILE COPY
Inspection and Editing.

MADISON WEST, IND.-KY.
Edition of 1948
N3837.5-W8522.5/7.5

FEB 25 1948

3200