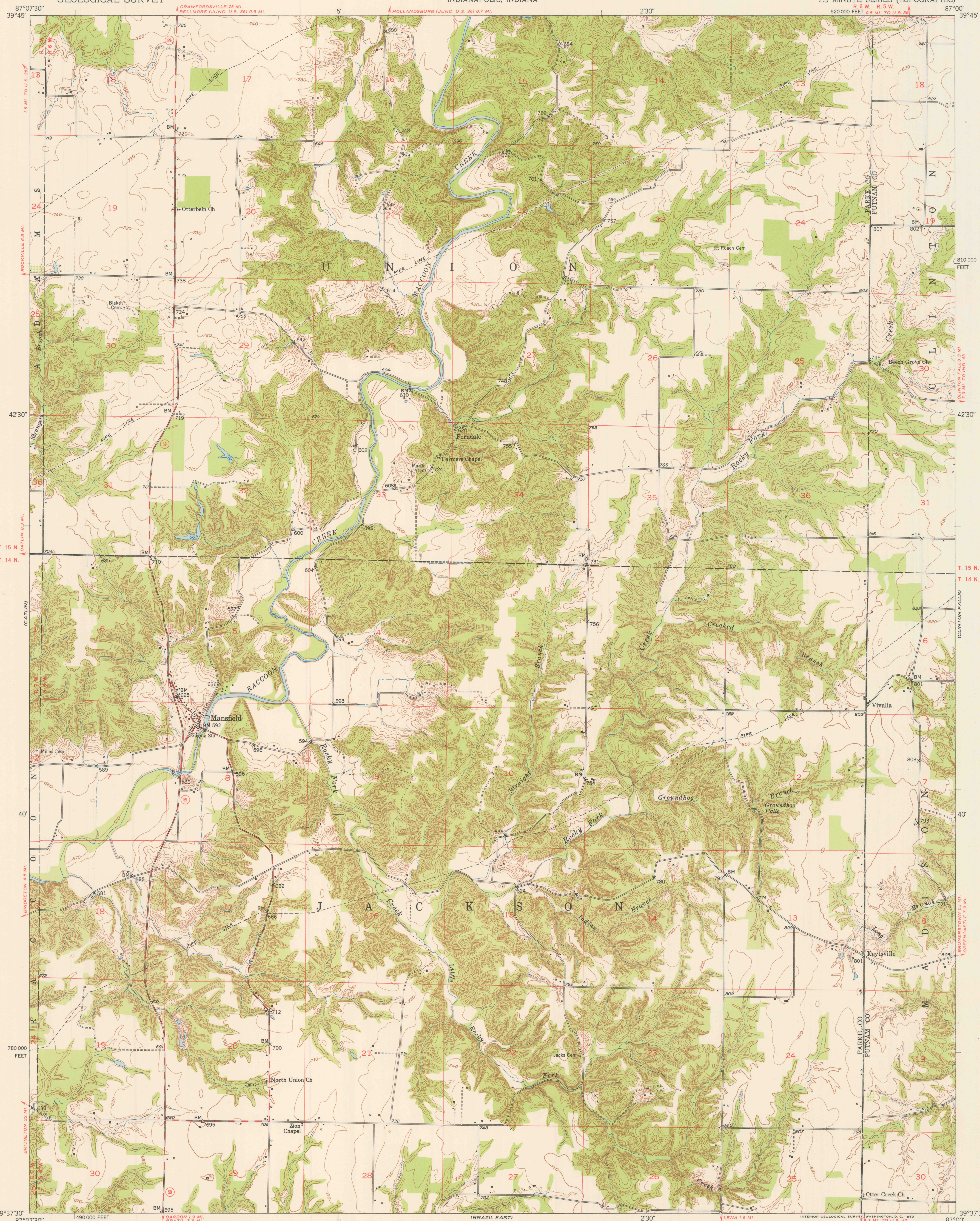
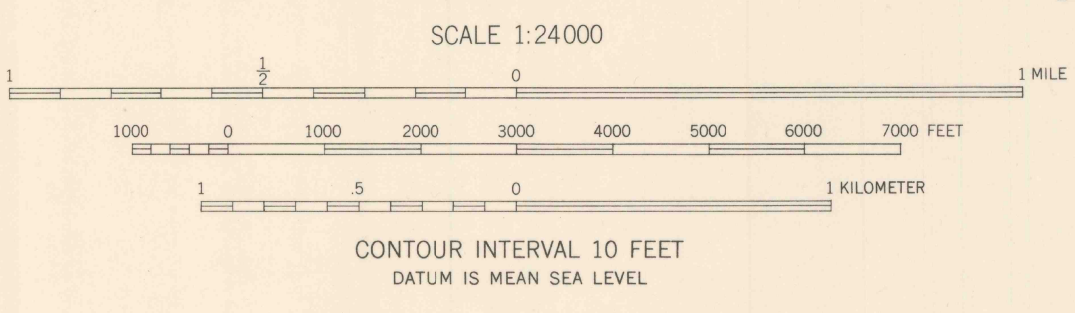


U. S. G. S.
FILE COPY
Imposition and Editing.



Mapped, edited, and published by the Geological Survey
Control by USGS, USC&GS, USCE and IFC-WRC
Culture and drainage in part compiled from aerial photographs
taken 1949. Topography by plane-table surveys 1951
Polyconic projection. 1927 North American datum
10,000-foot grid based on Indiana coordinate system,
west zone



USGS
Historical File
Topographic Division
ROAD CLASSIFICATION
Heavy-duty ———— 4 LANE 16 LANE Light-duty ————
Medium-duty ———— 4 LANE 16 LANE Unimproved dirt ————
U. S. Route (red square) State Route (red circle)

TRUE NORTH
MAGNETIC NORTH
APPROXIMATE MEAN
DECLINATION, 1951

THIS MAP COMPLIES WITH NATIONAL MAP ACCURACY STANDARDS
FOR SALE BY U. S. GEOLOGICAL SURVEY, WASHINGTON 25, D. C.
AND INDIANA DEPARTMENT OF CONSERVATION, INDIANAPOLIS, INDIANA
A FOLDER DESCRIBING TOPOGRAPHIC MAPS AND SYMBOLS IS AVAILABLE ON REQUEST



U. S. G. S.
FILE COPY
Imposition and Editing.

MANSFIELD, IND.
N3937.5—W8700/7.5
1951