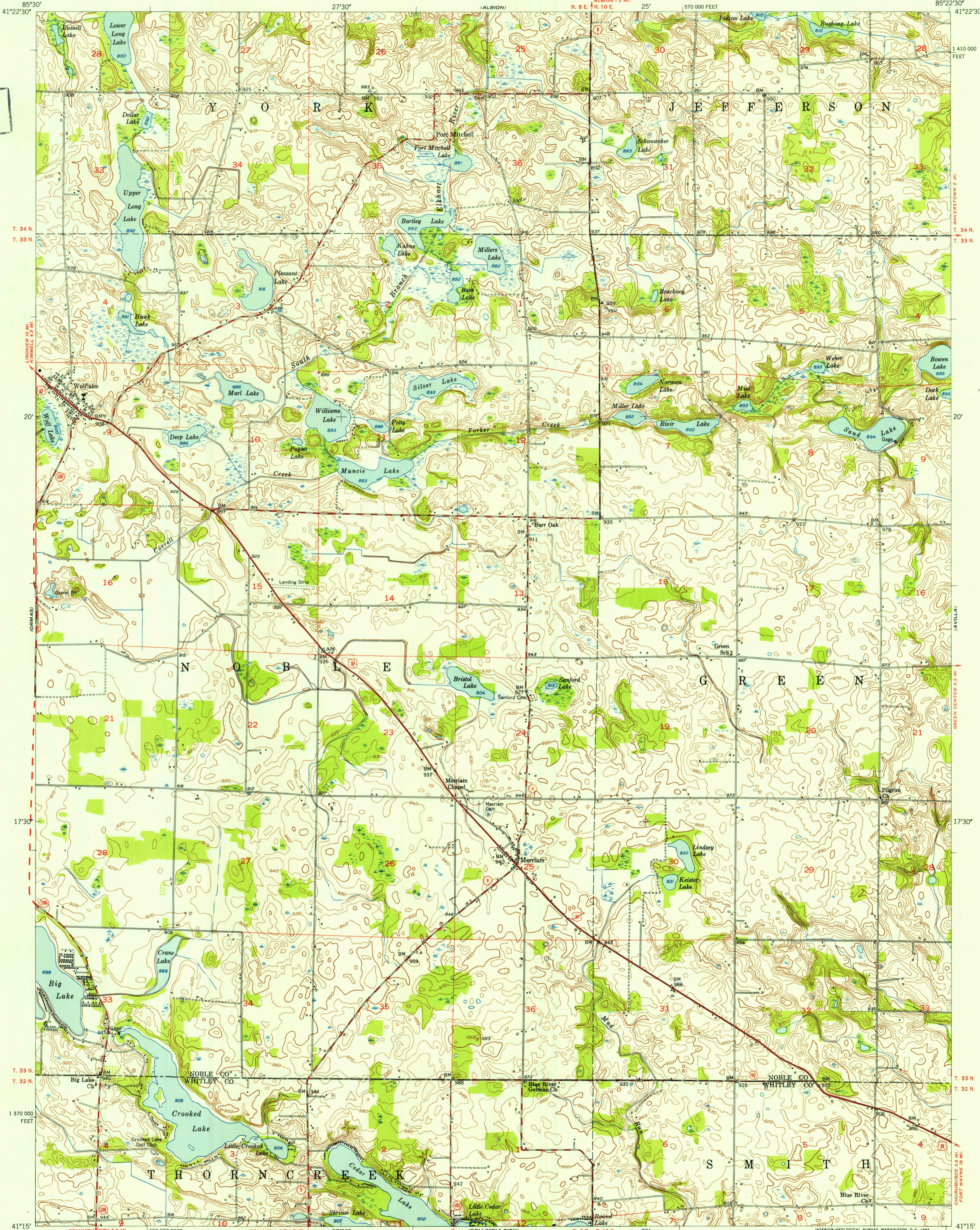


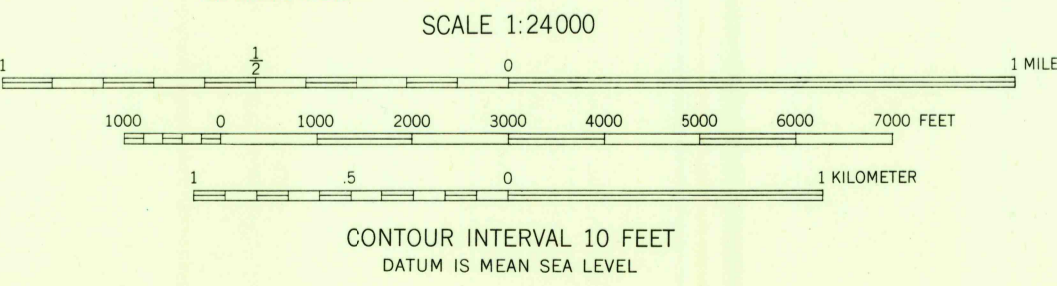
U. S. G. S.
FILE COPY
Imposition and Editing.



U. S. G. S.
FILE COPY
Imposition and Editing.

Mapped, edited, and published by the Geological Survey
Control by USGS and USC&GS
Culture and drainage in part compiled from
aerial photographs taken 1938
Topography by plane-table surveys 1951
Polyconic projection. 1927 North American datum
10,000-foot grid based on Indiana coordinate system,
east zone
More detailed information on the water surface
elevations of lakes may be obtained from the
Indiana Department of Conservation,
Indianapolis 9, Indiana

TRUE NORTH
MAGNETIC NORTH
APPROXIMATE MEAN
DECLINATION, 1951



CONTOUR INTERVAL 10 FEET
DATUM IS MEAN SEA LEVEL

USGS
Historical File
Topographic Division

ROAD CLASSIFICATION

Heavy-duty	2 LANE 16 LANE	Light-duty
Medium-duty	4 LANE 16 LANE	Unimproved dirt
U. S. Route		State Route

U. S. G. S.
FILE COPY
Imposition and Editing.

MERRIAM, IND.
N4115-W8522.5/7.5
1951

THIS MAP COMPLIES WITH NATIONAL MAP ACCURACY STANDARDS
FOR SALE BY U. S. GEOLOGICAL SURVEY, WASHINGTON 25, D. C.
AND INDIANA DEPARTMENT OF CONSERVATION, INDIANAPOLIS, INDIANA
A FOLDER DESCRIBING TOPOGRAPHIC MAPS AND SYMBOLS IS AVAILABLE ON REQUEST