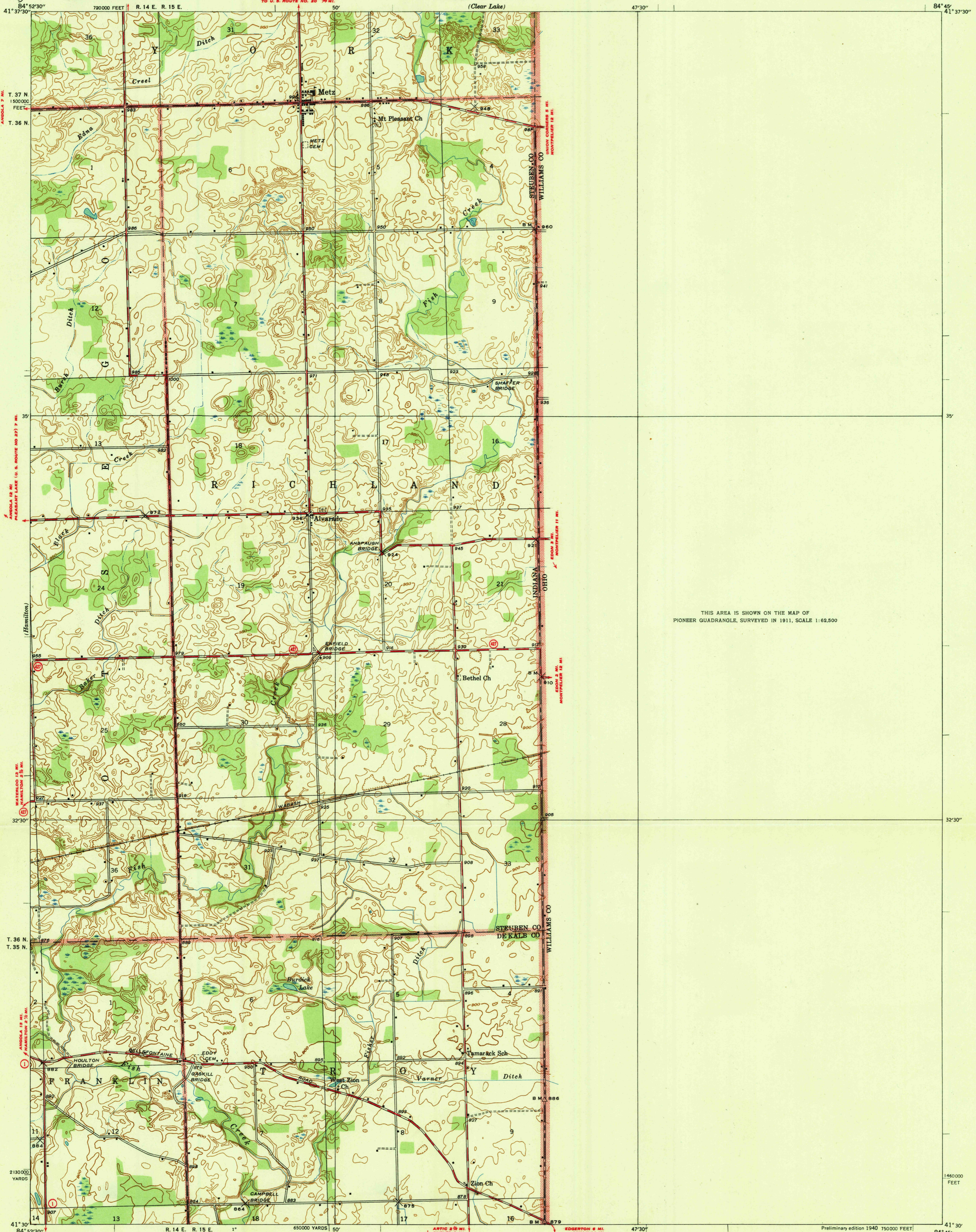


U. S. G. S.
FILE COPY
1938:Rea and Eding.

UNITED STATES
DEPARTMENT OF THE INTERIOR
GEOLOGICAL SURVEY

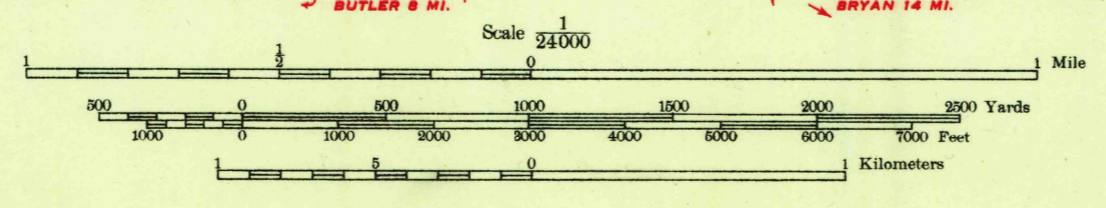
STATE OF INDIANA
DEPARTMENT OF CONSERVATION

INDIANA-OHIO
METZ QUADRANGLE



THIS AREA IS SHOWN ON THE MAP OF
PIONEER QUADRANGLE, SURVEYED IN 1911, SCALE 1:62,500

Albert Pike, Division Engineer
Topography by W. K. McKinley and G. A. Mock
Surveyed in 1938



Contour interval 10 feet
Datum is mean sea level

USGS
Historical File
Topographic Division
ROUTES USUALLY TRAVELED
HARD IMPROVED SURFACES
OTHER SURFACE IMPROVEMENTS
1938
U. S. ROUTE
STATE ROUTE

Preliminary edition 1940 750000 FEET
Polyconic projection. 1927 North American datum
5000 yard grid based on U. S. zone system, B
10000 foot grid based on Indiana (East)
rectangular coordinate system

METZ, IND.-OHIO

N4130-W8445/7.5

U. S. G. S.
FILE COPY
1938:Rea and Eding.