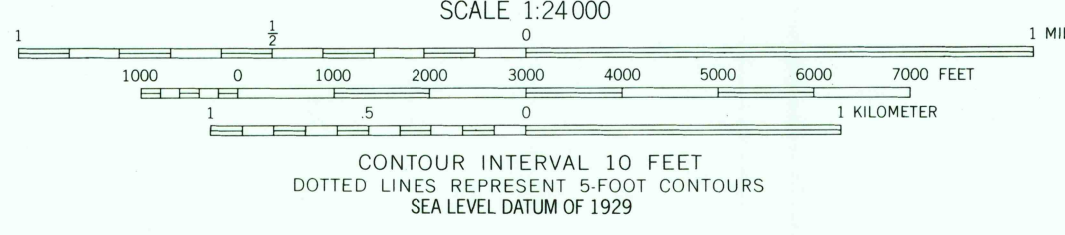
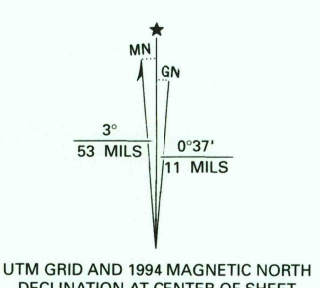
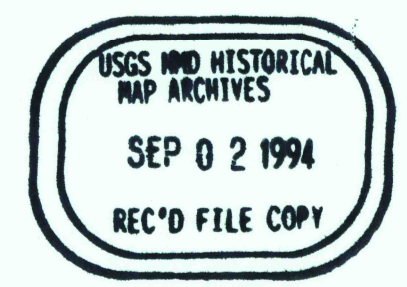


Produced by the U. S. Geological Survey
Control by USGS and NOS/NOAA
Culture and drainage in part compiled from aerial photographs
taken 1957. Topography by planetable surveys 1959
Projection and 10,000-foot grid ticks: Indiana coordinate
system, east zone (transverse Mercator)
1000-meter Universal Transverse Mercator grid ticks, zone 16, shown in blue
1927 North American Datum (NAD 27)
North American Datum of 1983 (NAD 83) is shown by dashed corner ticks
The values of the shift between NAD 27 and NAD 83 for 7.5-minute
intersections are given in USGS Bulletin 1875
Red tint indicates area in which only landmark buildings are shown
Fine red dashed lines indicate selected fence and field lines where
generally visible on aerial photographs. This information is unchecked
Photosinspected from 1992 source; no major culture or drainage
changes observed. Boundaries and names revised 1994



THIS MAP COMPLIES WITH NATIONAL MAP ACCURACY STANDARDS
FOR SALE BY U.S. GEOLOGICAL SURVEY, DENVER, COLORADO 80225, OR RESTON, VIRGINIA 22092
AND INDIANA DEPARTMENT OF NATURAL RESOURCES, INDIANAPOLIS, INDIANA 46204
A FOLDER DESCRIBING TOPOGRAPHIC MAPS AND SYMBOLS IS AVAILABLE ON REQUEST

ROAD CLASSIFICATION
Primary highway, hard surface
Secondary highway, hard surface
Interstate Route
U. S. Route
State Route
Light-duty road, hard or improved surface
Unimproved road



MIAMI, IND.
40086-ET-024
1959
MINOR REVISION 1994
DMA 3765 11 SE - SERIES V851