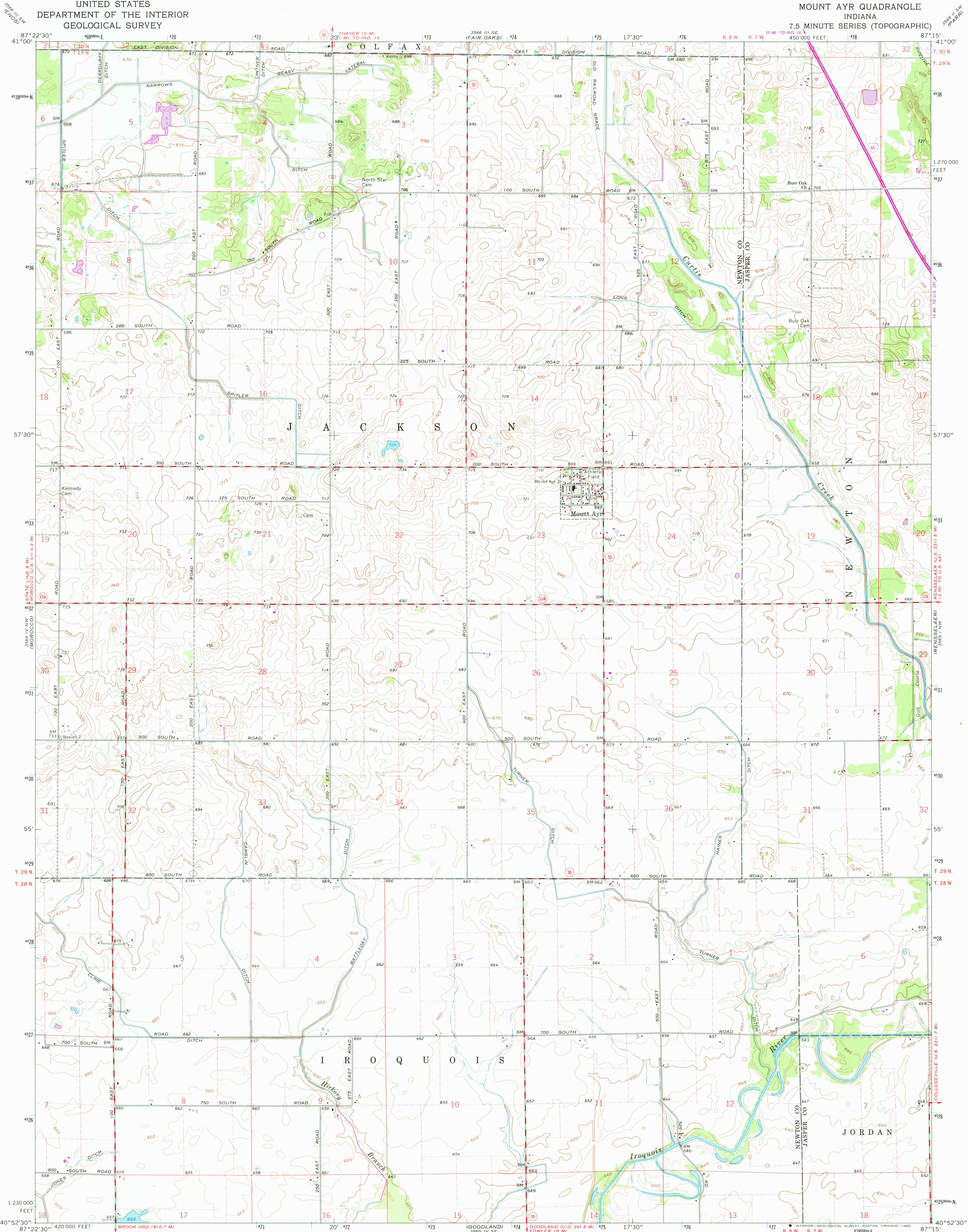


UNITED STATES
DEPARTMENT OF THE INTERIOR
GEOLOGICAL SURVEY

MOUNT AYR QUADRANGLE
INDIANA

7.5 MINUTE SERIES (TOPOGRAPHIC)



Mapped, edited, and published by the Geological Survey

Control by USGS, NOS/NOAA, USCE, and Indiana Flood Control

and Water Resources Commission

Planimetry by photogrammetric methods from aerial photographs

taken 1959. Topography by planetable surveys 1961

Polyconic projection. 10,000-foot grid based on

Indiana coordinate system, west zone

1000-meter Universal Transverse Mercator grid ticks,

zone 16, shown in blue. 1927 North American Datum

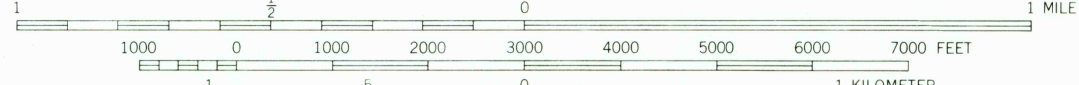
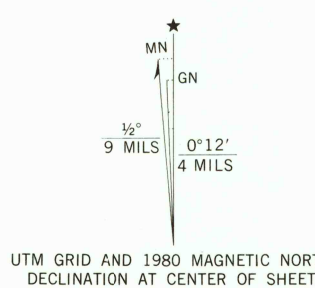
To place on the predicted North American Datum 1983

move the projection lines 3 meters east

as shown by dashed corner ticks

Fine red dashed lines indicate selected fence and field lines where

generally visible on aerial photographs. This information is unchecked



CONTOUR INTERVAL 5 FEET

NATIONAL GEODETIC VERTICAL DATUM OF 1929

THIS MAP COMPLIES WITH NATIONAL MAP ACCURACY STANDARDS
FOR SALE BY U. S. GEOLOGICAL SURVEY, RESTON, VIRGINIA 22092
AND INDIANA DEPARTMENT OF NATURAL RESOURCES, INDIANAPOLIS, INDIANA 46204
A FOLDER DESCRIBING TOPOGRAPHIC MAPS AND SYMBOLS IS AVAILABLE ON REQUEST

Revisions shown in purple compiled in cooperation with State of
Indiana agencies from aerial photographs taken 1976 and other
source data. This information not field checked. Map edited 1980

ROAD CLASSIFICATION
Primary highway, hard surface
Secondary highway, hard surface
Unimproved road
Light-duty road, hard or improved surface
Unimproved road
Interstate Route
U. S. Route
State Route



MOUNT AYR, IND.

N4052.5-W8715.7.5

1961

PHOTOREVISED 1980

DMA 3565 IV NE-SERIES W851

NOV 17 1980
2050

USGS
Historical File
Topographic Division