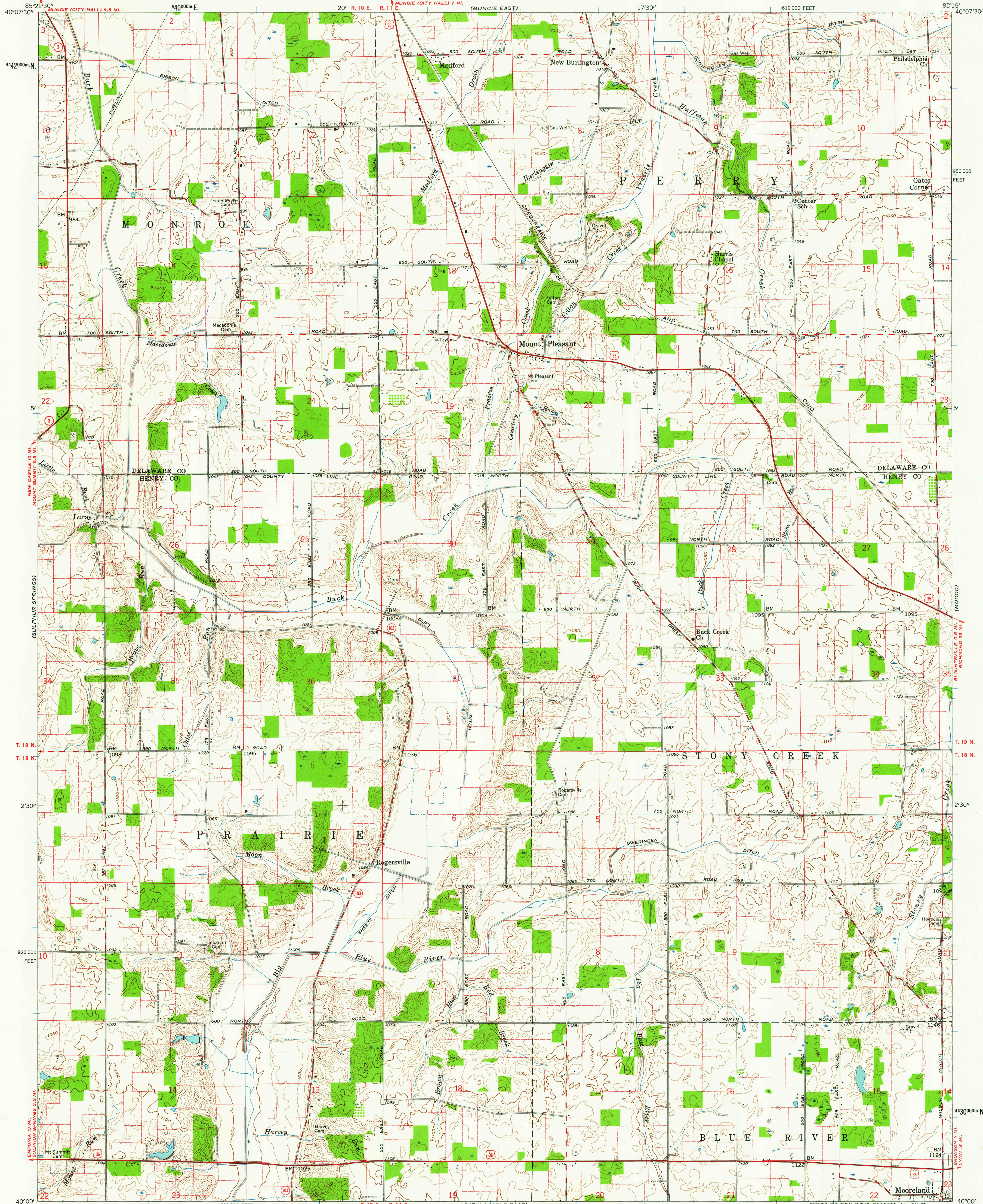


UNITED STATES
DEPARTMENT OF THE INTERIOR
GEOLOGICAL SURVEY

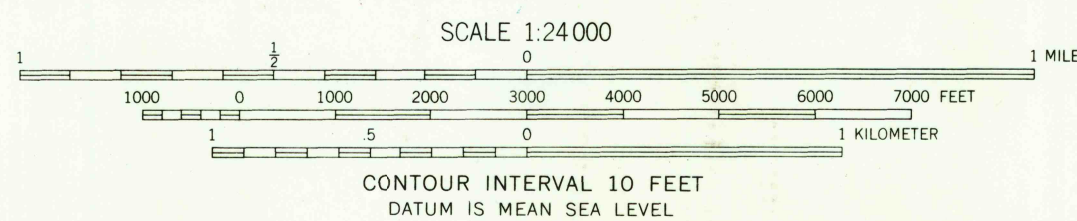
STATE OF INDIANA
INDIANA DEPARTMENT OF CONSERVATION
INDIANAPOLIS, INDIANA

MOUNT PLEASANT QUADRANGLE
INDIANA
7.5 MINUTE SERIES (TOPOGRAPHIC)

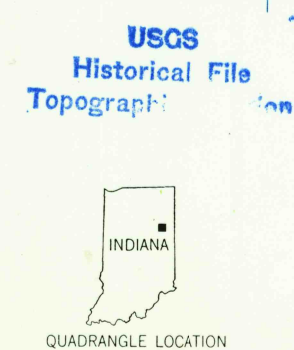


Mapped, edited, and published by the Geological Survey
Control by USGS and USC&GS
Topography from aerial photographs by photogrammetric methods
Aerial photographs taken 1958. Field check 1960
Polyconic projection. 1927 North American datum
10,000-foot grid based on Indiana coordinate system, east zone
1000-meter Universal Transverse Mercator grid ticks,
zone 16, shown in blue
Fine red dashed lines indicate selected fence and field lines where
generally visible on aerial photographs. This information is unchecked

TRUE NORTH
MAGNETIC NORTH
APPROXIMATE MEAN
DECLINATION, 1960



THIS MAP COMPLIES WITH NATIONAL MAP ACCURACY STANDARDS
FOR SALE BY U.S. GEOLOGICAL SURVEY, WASHINGTON 25, D.C.
AND INDIANA DEPARTMENT OF CONSERVATION, INDIANAPOLIS, INDIANA
A FOLDER DESCRIBING TOPOGRAPHIC MAPS AND SYMBOLS IS AVAILABLE ON REQUEST



ROAD CLASSIFICATION
Heavy-duty ——— Light-duty ———
Medium-duty ——— Unimproved dirt ———
U.S. Route ——— State Route ———

MOUNT PLEASANT, IND.
N4000—W8515/7.5
1960

USGS
FILE COPY
TOPOGRAPHIC DIVISION

AUG - 2 1961