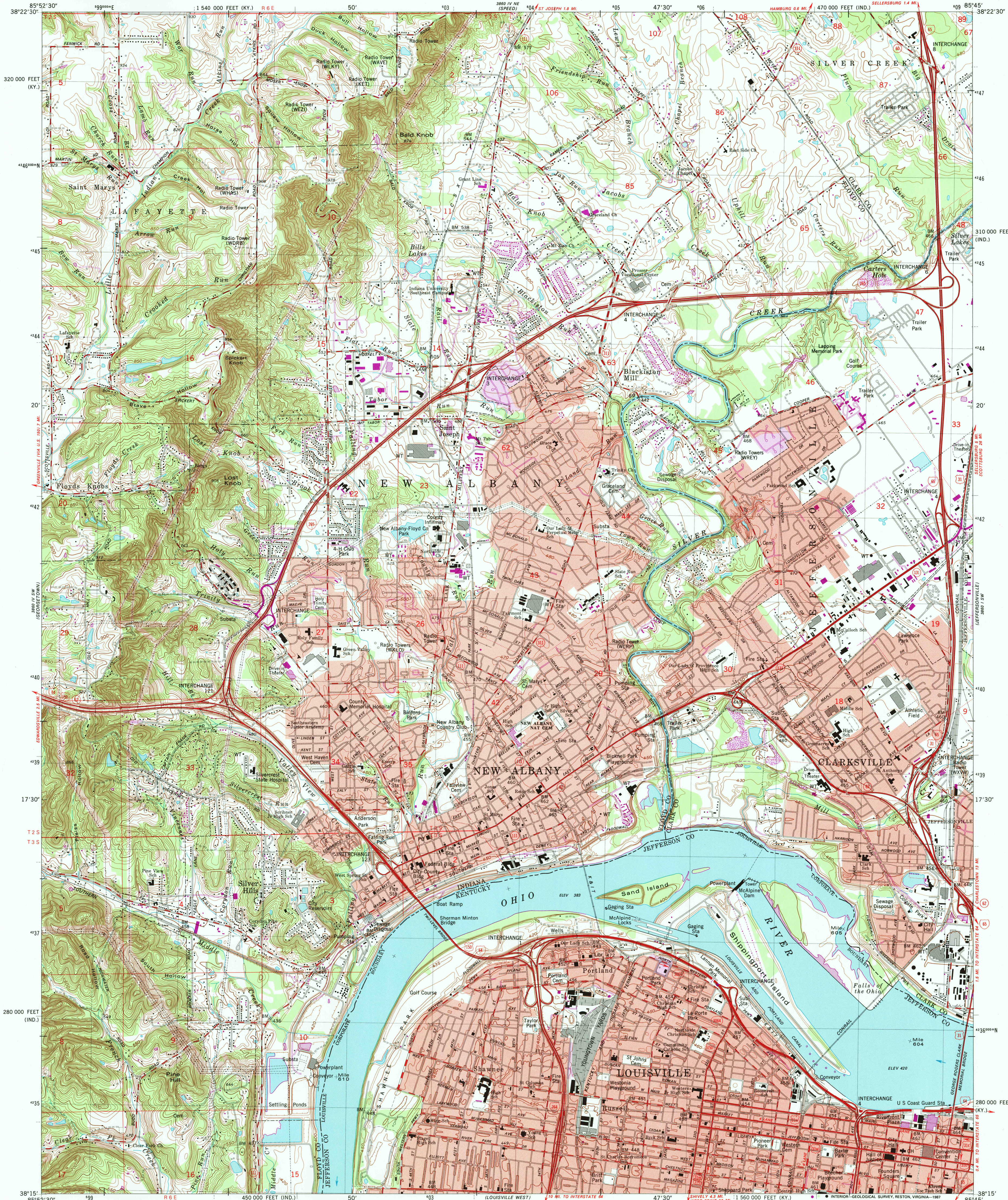


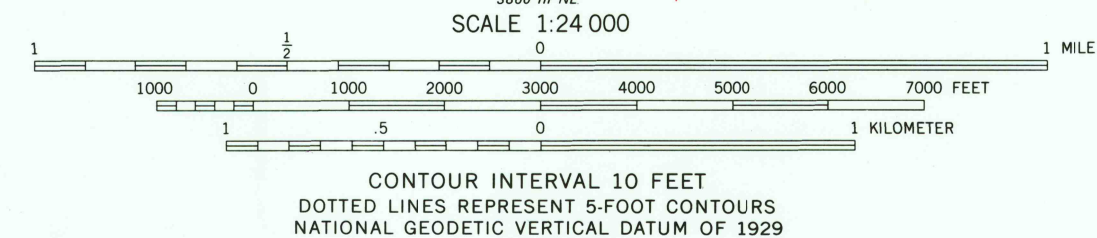
UNITED STATES
DEPARTMENT OF THE INTERIOR
GEOLOGICAL SURVEY

NEW ALBANY QUADRANGLE
INDIANA-KENTUCKY
7.5 MINUTE SERIES (TOPOGRAPHIC)
SE/4 NEW ALBANY 15' QUADRANGLE
SELLERSBURG 1.4 MI.



Maped, edited, and published by the Geological Survey
in cooperation with Indiana Department of Natural Resources
and Kentucky Geological Survey
Control by USGS, NOS/NOAA, USCE, Indiana Flood Control and
Water Resources Commission, and the City of Louisville
Topography in Indiana by planimetric surveys 1937-1938. Planimetry
in Kentucky by photogrammetric methods from aerial photographs taken
1949. Topography by planimetric surveys 1950. Revised from aerial
photographs taken 1978. Field checked 1979. Map edited 1982.
Polyconic projection. 10,000-foot grid ticks based on Indiana
coordinate system, east zone, and Kentucky coordinate system,
north zone. 1000-meter Universal Transverse Mercator grid, zone 16
1927 North American Datum
To place on the predicted North American Datum 1983
move the projection lines 3 meters south and
2 meters west as shown by dashed corner ticks
Red tint indicates areas in which only landmark buildings are shown
Dotted land lines established by private survey

UTM GRID AND 1987 MAGNETIC NORTH
DECLINATION AT CENTER OF SHEET
There may be private inholdings within the boundaries of
the National or State reservations shown on this map



THIS MAP COMPLIES WITH NATIONAL MAP ACCURACY STANDARDS
FOR SALE BY U.S. GEOLOGICAL SURVEY, DENVER, COLORADO 80225 OR RESTON, VIRGINIA 22092,
INDIANA DEPARTMENT OF NATURAL RESOURCES, INDIANAPOLIS, INDIANA 46204,
KENTUCKY GEOLOGICAL SURVEY, LEXINGTON, KENTUCKY 40506,
AND KENTUCKY DEPARTMENT OF COMMERCE, FRANKFORT, KENTUCKY 40601
A FOLDER DESCRIBING TOPOGRAPHIC MAPS AND SYMBOLS IS AVAILABLE ON REQUEST

Revisions shown in purple and woodland compiled in cooperation
with State of Kentucky agencies from aerial photographs taken 1984
and other sources. Contours not revised. This information not field
checked. Map edited 1987
Purple tint indicates extension of urban areas

ROAD CLASSIFICATION
Primary highway, hard surface
Secondary highway, hard surface
Light-duty road, hard or improved surface
Unimproved road
Interstate Route
U.S. Route
State Route

NEW ALBANY, IND.-KY.
SE/4 NEW ALBANY 15' QUADRANGLE
38085-C7-TF-024

1982
PHOTOREVISED 1987
DMA 38085 IV SE-SERIES V851

USGS NMD HISTORICAL MAP

JUN 02 1988

REC'D FILE COPY