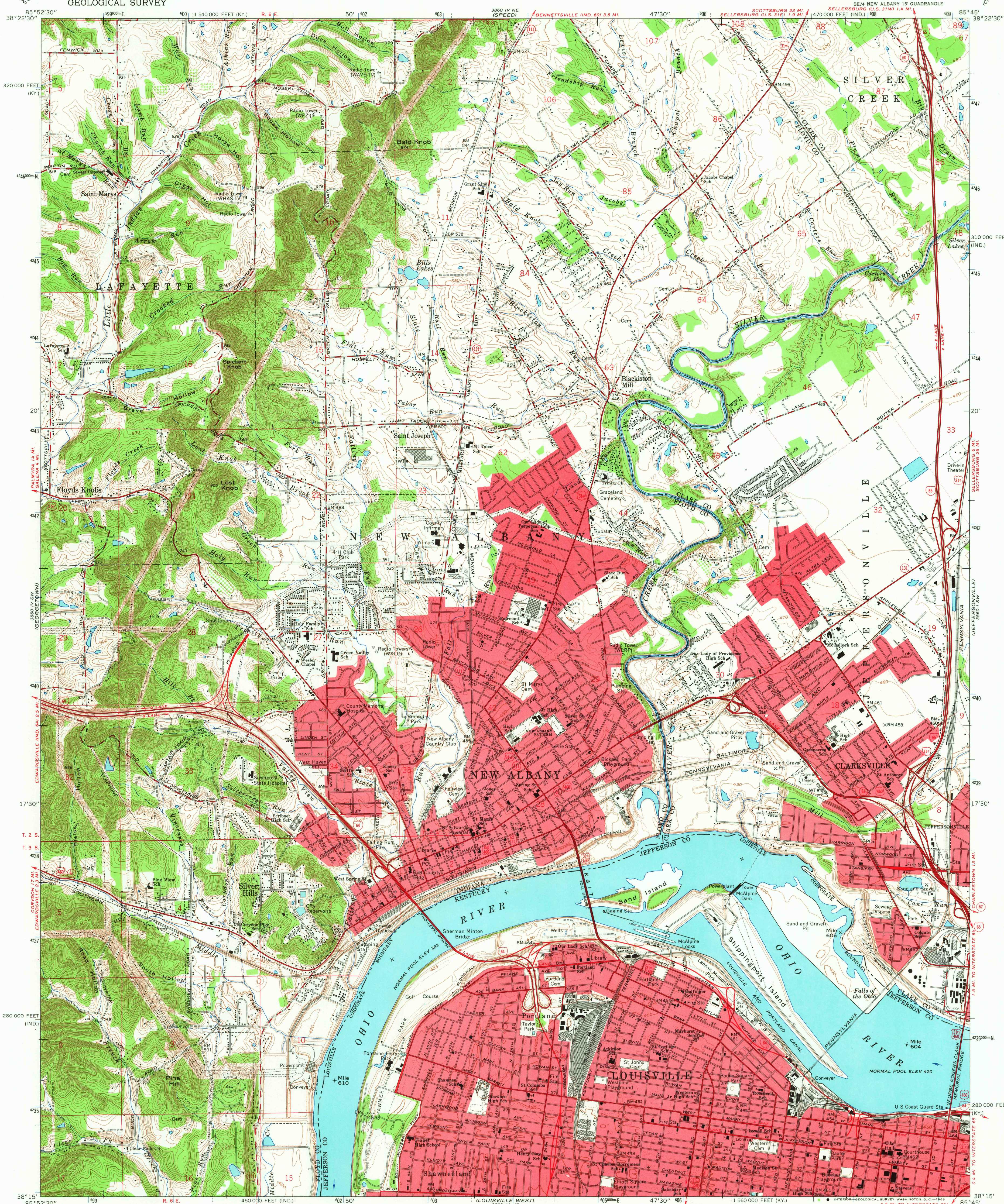


UNITED STATES  
DEPARTMENT OF THE INTERIOR  
GEOLOGICAL SURVEY

NEW ALBANY QUADRANGLE  
INDIANA-KENTUCKY  
7.5 MINUTE SERIES (TOPOGRAPHIC)



Mapped, edited, and published by the Geological Survey in cooperation with Indiana Department of Natural Resources and Kentucky Geological Survey. Revised in cooperation with Kentucky Geological Survey.

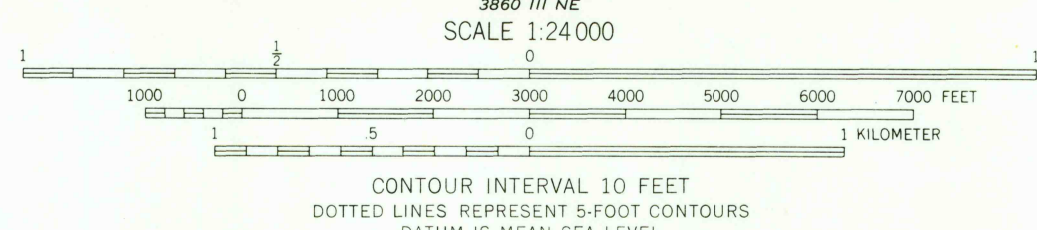
Control by USGS, USGS&S, USCE, and City of Louisville.

Topography in Indiana by planetable surveys 1937-1938. Planimetry in Kentucky by photogrammetric methods from aerial photographs taken 1949. Topography by planetable surveys 1950. Entire map revised 1965.

Polyconic projection. 1927 North American datum. 10,000-foot grids based on Indiana coordinate system, east zone, and Kentucky coordinate system, north zone. 1000-meter Universal Transverse Mercator grid ticks, zone 16, shown in blue.

The state boundary as shown represents the approximate position of the low water line as determined from U.S. Corps of Engineers Ohio River charts, surveyed 1911-1912, and supplementary information. Red tint indicates areas in which only landmark buildings are shown. Dotted land lines established by private survey.

UTM GRID AND 1965 MAGNETIC NORTH DECLINATION AT CENTER OF SHEET



THIS MAP COMPLIES WITH NATIONAL MAP ACCURACY STANDARDS FOR SALE BY U.S. GEOLOGICAL SURVEY, WASHINGTON, D.C. 20242 INDIANA DEPARTMENT OF NATURAL RESOURCES, INDIANAPOLIS, INDIANA 46204 KENTUCKY GEOLOGICAL SURVEY, LEXINGTON, KENTUCKY 40506 AND KENTUCKY DEPARTMENT OF COMMERCE, FRANKFORT, KENTUCKY 40601 A FOLDER DESCRIBING TOPOGRAPHIC MAPS AND SYMBOLS IS AVAILABLE ON REQUEST

USGS  
Historical File  
Topographic Division

U.S.G.S.  
FILE COPY  
TOPOGRAPHIC DIVISION

ROAD CLASSIFICATION

Heavy-duty	Light-duty
Medium-duty	Unimproved dirt
Interstate Route	U.S. Route
	State Route

NEW ALBANY, IND.-KY.  
SE/4 NEW ALBANY 15' QUADRANGLE  
N3815-W8545/7.5  
1965  
AMS 3860 IV SE-SERIES V851

10 475  
T10  
DEC 1 1967