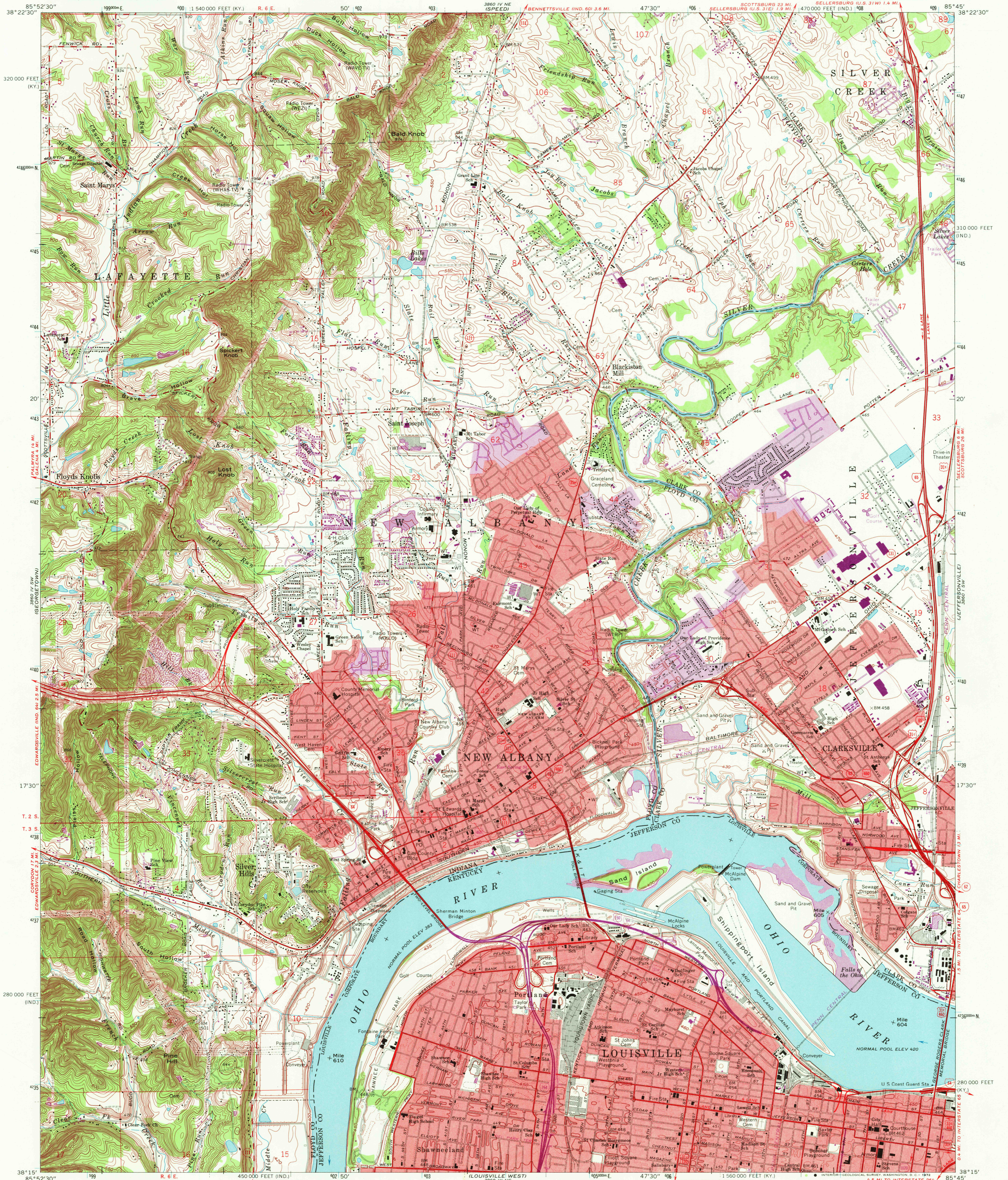
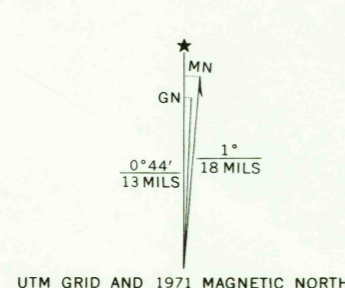


UNITED STATES
DEPARTMENT OF THE INTERIOR
GEOLOGICAL SURVEY

NEW ALBANY QUADRANGLE
INDIANA—KENTUCKY
7.5 MINUTE SERIES (TOPOGRAPHIC)



Mapped, edited, and published by the Geological Survey in cooperation with Indiana Department of Natural Resources and Kentucky Geological Survey. Revised in cooperation with Kentucky Geological Survey.
Control by USGS, USC&GS, USCE, and City of Louisville.
Topography in Indiana by planetable surveys 1937-1938. Planimetry in Kentucky by photogrammetric methods from aerial photographs taken 1949. Topography by planetable surveys 1950. Entire map revised 1965.
Polyconic projection. 1927 North American datum. 10,000-foot grids based on Indiana coordinate system, east zone, and Kentucky coordinate system, north zone. 1000-meter Universal Transverse Mercator grid ticks, zone 16, shown in blue.
The state boundary as shown represents the approximate position of the low water line as determined from U. S. Corps of Engineers Ohio River charts, surveyed 1911-1912, and supplementary information.
Red tint indicates areas in which only landmark buildings are shown.
Dotted land lines established by private survey.



SCALE 1:24,000
CONTOUR INTERVAL 10 FEET
DOTTED LINES REPRESENT 5-FOOT CONTOURS
DATUM IS MEAN SEA LEVEL
THIS MAP COMPLIES WITH NATIONAL MAP ACCURACY STANDARDS
FOR SALE BY U. S. GEOLOGICAL SURVEY, WASHINGTON, D. C. 20242
INDIANA DEPARTMENT OF NATURAL RESOURCES, INDIANAPOLIS, INDIANA 46204
KENTUCKY GEOLOGICAL SURVEY, LEXINGTON, KENTUCKY 40506
AND KENTUCKY DEPARTMENT OF COMMERCE, FRANKFORT, KENTUCKY 40601
A FOLDER DESCRIBING TOPOGRAPHIC MAPS AND SYMBOLS IS AVAILABLE ON REQUEST

ROAD CLASSIFICATION
Heavy-duty ——— Light-duty ———
Medium-duty ——— Unimproved dirt ———
Interstate Route ——— U. S. Route ——— State Route ———
NEW ALBANY, IND.—KY.
SE/4 NEW ALBANY 15' QUADRANGLE
N3815—W8545/7.5
1965
PHOTOREVISED 1971
AMS 3860 IV SE—SERIES V851

USGS
HISTORICAL FILE
TOPOGRAPHIC DIVISION
10360
MAR 23 1972