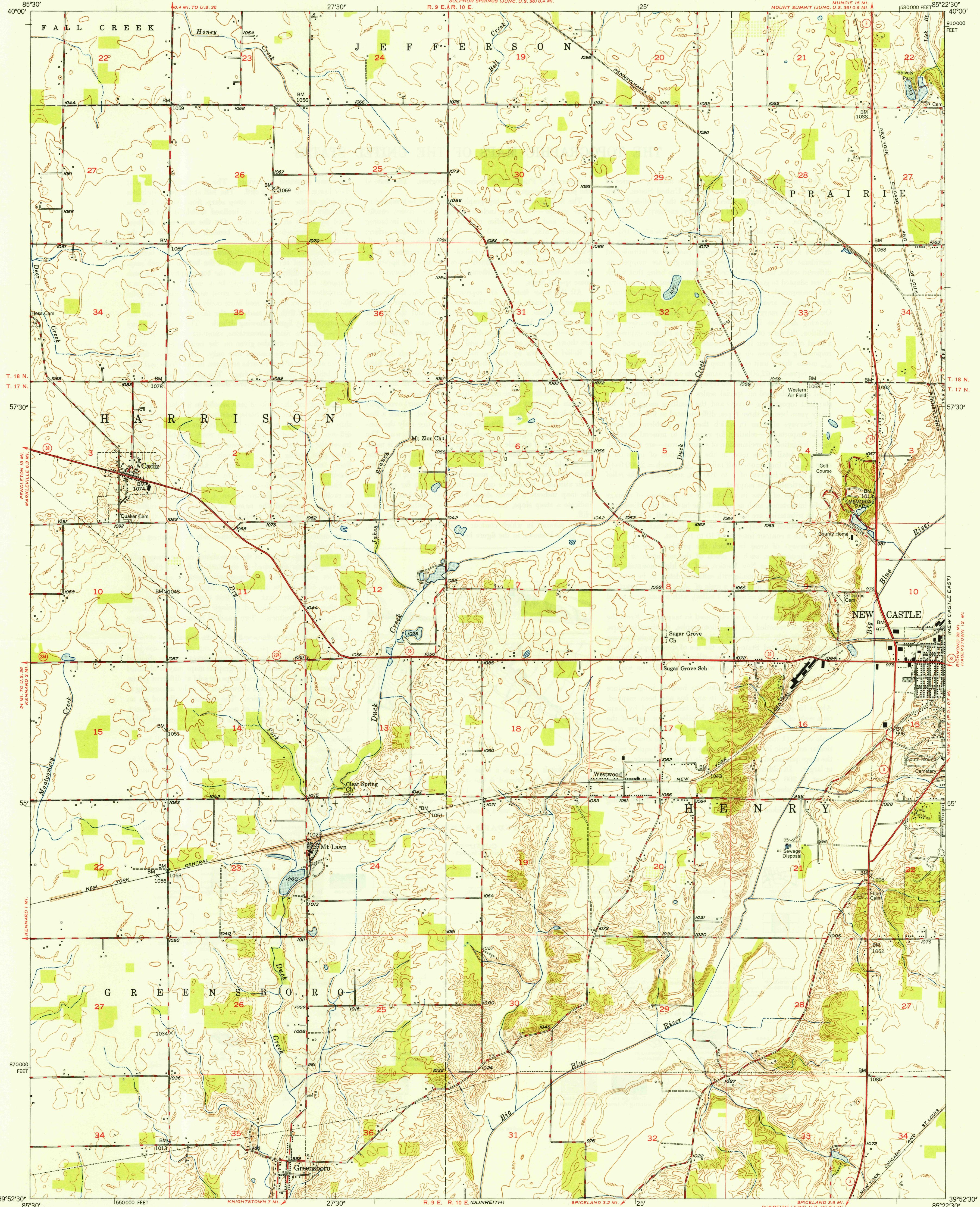


U. S. G. S.
FILE COPY
Inspection and Editing.

UNITED STATES
DEPARTMENT OF THE INTERIOR
GEOLOGICAL SURVEY

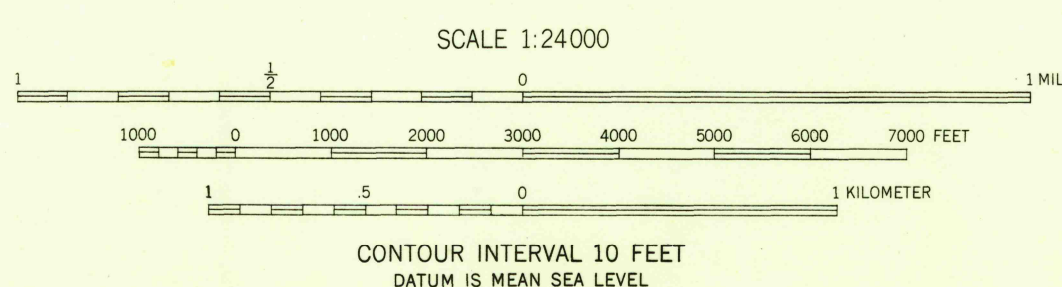
STATE OF INDIANA
INDIANA DEPARTMENT OF CONSERVATION
INDIANAPOLIS, INDIANA

NEW CASTLE WEST QUADRANGLE
INDIANA-HENRY CO.
7.5 MINUTE SERIES (TOPOGRAPHIC)



Mapped, edited, and published by the Geological Survey
Control by USGS and USC&GS
Culture and drainage in part compiled from
aerial photographs taken 1947
Topography by plane-table methods 1948
Polyconic projection, 1927 North American datum
10,000-foot grid based on Indiana coordinate system,
east zone

TRUE NORTH
MAGNETIC NORTH
APPROXIMATE MEAN
DECLINATION, 1948



USGS
Historical File
Topographic Division

ROAD CLASSIFICATION
HARD-SURFACE ALL WEATHER ROADS
Heavy-duty 4 LANE LANE Improved dirt
Medium-duty 4 LANE LANE Unimproved dirt
Loose-surface, graded, or narrow hard-surface
U. S. Route State Route

NEW CASTLE WEST, IND.
N3952.5-W8522.5/7.5
EDITION OF 1949

THIS MAP COMPLIES WITH NATIONAL MAP ACCURACY STANDARDS
FOR SALE BY U. S. GEOLOGICAL SURVEY, WASHINGTON 25, D. C.