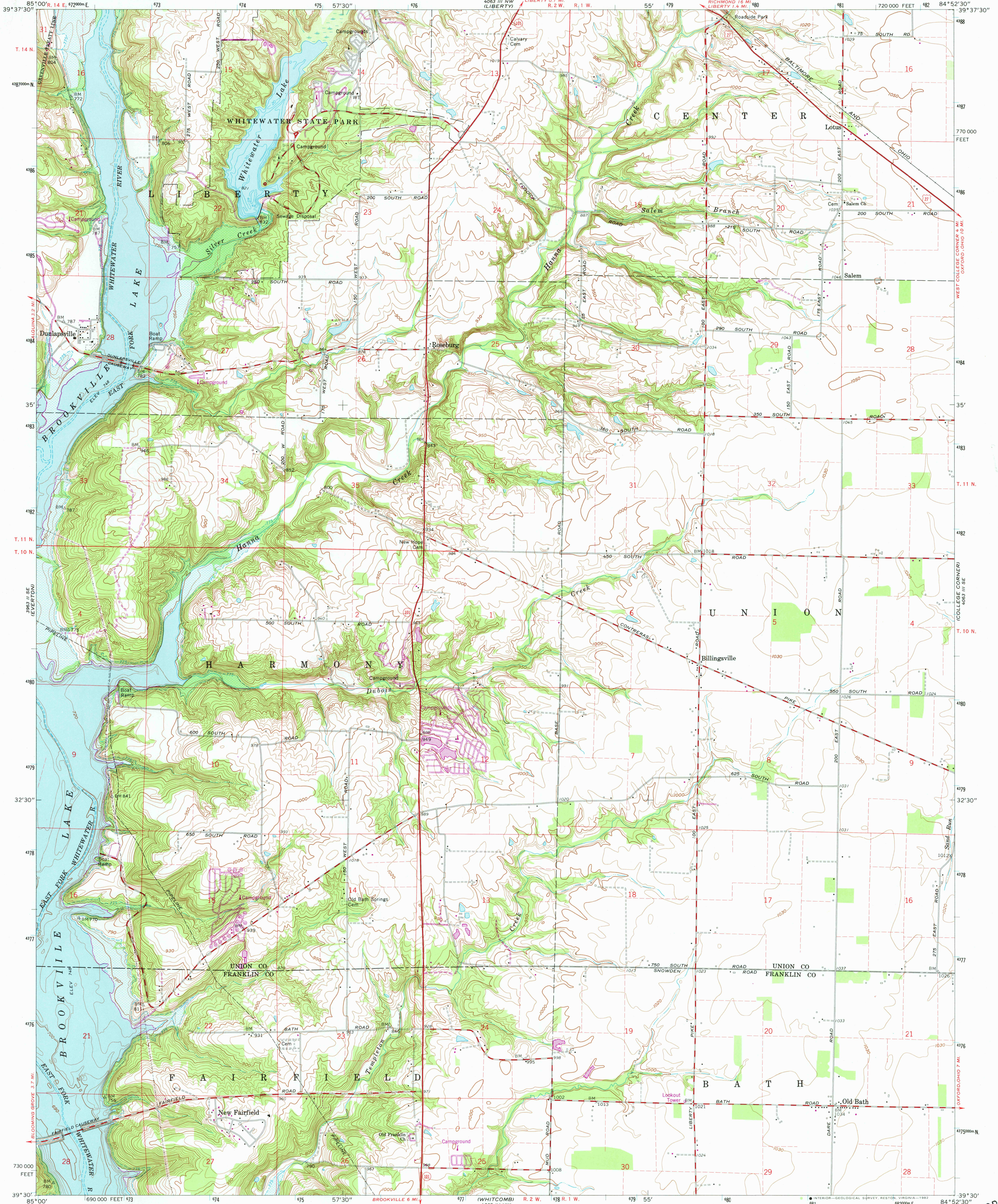


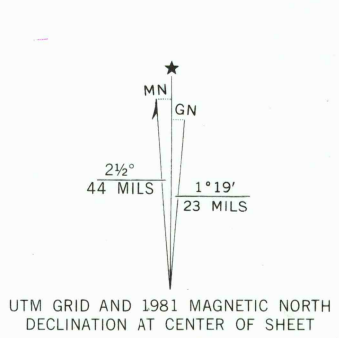
UNITED STATES
DEPARTMENT OF THE INTERIOR
GEOLOGICAL SURVEY

STATE OF INDIANA
DEPARTMENT OF NATURAL RESOURCES
INDIANAPOLIS, INDIANA

NEW FAIRFIELD QUADRANGLE
INDIANA
7.5 MINUTE SERIES (TOPOGRAPHIC)



Mapped, edited, and published by the Geological Survey
Control by USGS, NOS/IAA, USACE, and Indiana
Flood Control and Water Resources Commission
Culture compiled from aerial photographs taken 1940
Topography by planetable surveys 1946. Revised from aerial
photographs taken 1973. Field checked 1974
Depth curves and soundings compiled from USGS-Indiana
Department of Natural Resources lake charts
Polyconic projection. 10,000-foot grid ticks based on Indiana
coordinate system, east zone. 1000-meter Universal
Transverse Mercator grid ticks, zone 16, shown in blue
1927 North American Datum. To place on the predicted
North American Datum 1983 move the projection lines
2 meters south and 4 meters west as shown by dashed corner ticks
Fine red dashed lines indicate selected fence and field lines where
generally visible on aerial photographs. This information is unchecked
Areas covered by dashed light-blue pattern are subject to controlled inundation
There may be private inholdings within the boundaries
of the National or State reservations on this map



THIS MAP COMPLIES WITH NATIONAL MAP ACCURACY STANDARDS
FOR SALE BY U.S. GEOLOGICAL SURVEY, RESTON, VIRGINIA 22092
AND INDIANA DEPARTMENT OF NATURAL RESOURCES, INDIANAPOLIS, INDIANA 46204
A FOLDER DESCRIBING TOPOGRAPHIC MAPS AND SYMBOLS IS AVAILABLE ON REQUEST

Revisions shown in purple and woodland compiled in
cooperation with State of Indiana agencies from aerial
photographs taken 1979 and other sources. This
information not field checked. Map edited 1981

ROAD CLASSIFICATION
Primary highway, hard surface
Secondary highway, hard surface
Unimproved road
Light-duty road, hard or improved surface
Unimproved road
Interstate Route
U. S. Route
State Route

NEW FAIRFIELD, IND.
(FORMERLY FAIRFIELD)
N3930-W8452.5/7.5
1974
PHOTOREVISED 1981
DMA 4063 III SW-SERIES V851

APR 15 1982

2700