

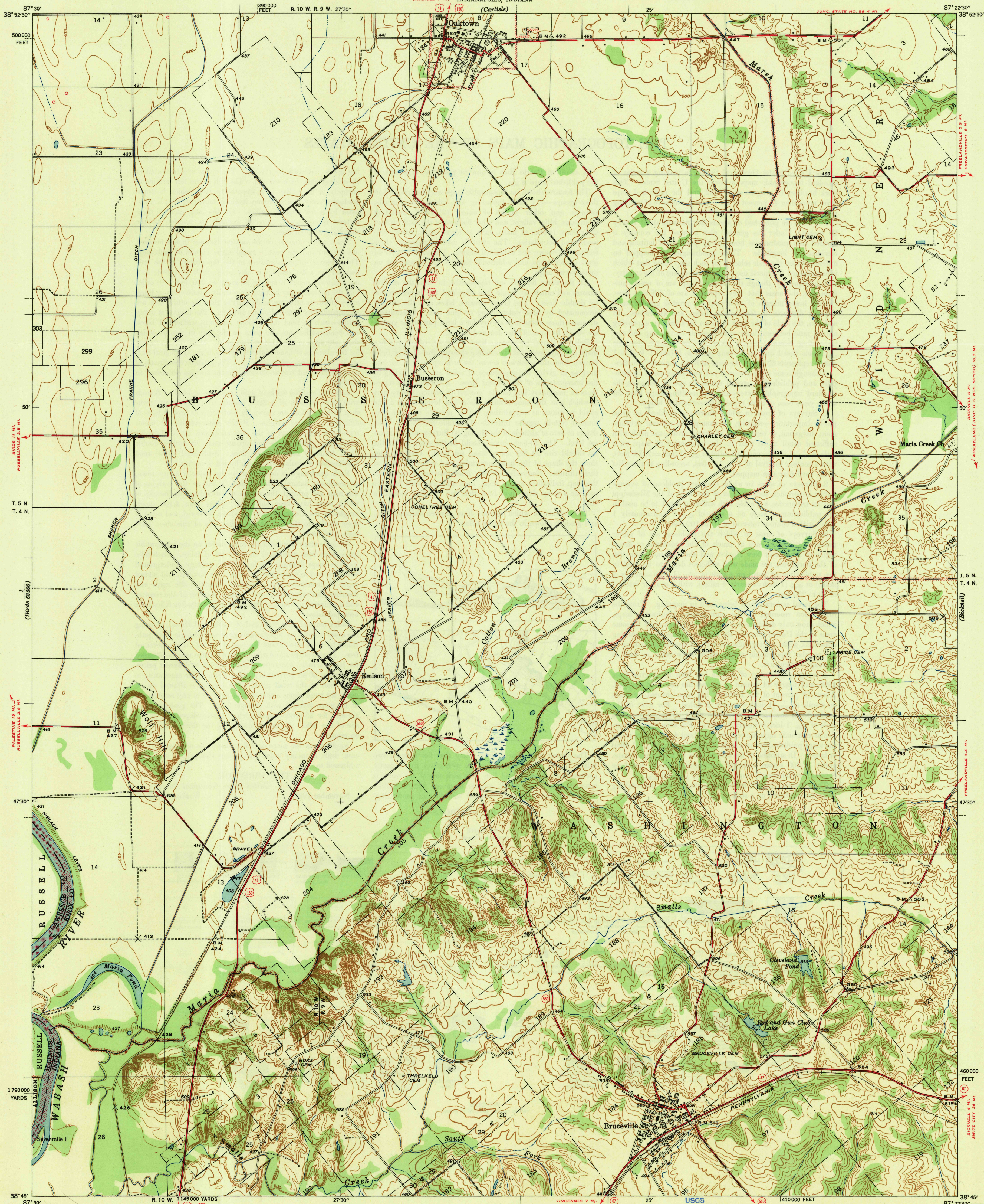
(2946)
87200

UNITED STATES
DEPARTMENT OF THE INTERIOR
GEOLOGICAL SURVEY

STATE OF INDIANA
DEPARTMENT OF CONSERVATION
DIVISION OF GEOLOGY
INDIANAPOLIS, INDIANA

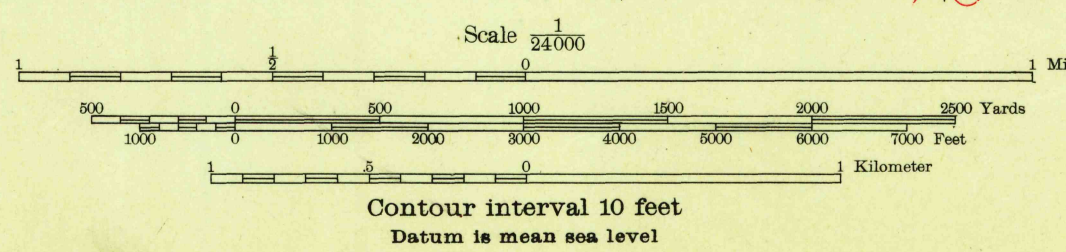
U. S. G. S.
FILE COPY
Inspection and Editing.

INDIANA-ILLINOIS
OAKTOWN QUADRANGLE
7½-MINUTE SERIES



Topography by S. D. Farmer, Shirley Waggener
C. W. Hoff, G. A. Mock, and G. A. Harper
Surveyed in 1941

TRUE NORTH
MAGNETIC NORTH
APPROXIMATE MEAN
DECLINATION, 1941



USCS
Historical
Topographic Division
ROUTES USUALLY TRAVELED
HARD IMPROVED SURFACES
OTHER SURFACE IMPROVEMENTS
U. S. ROUTE 1943
STATE ROUTE
OIL WELLS

Polyconic projection. 1927 North American datum
5000 yard grid based on U. S. zone system, C
10000 foot grid based on Indiana (West)
rectangular coordinate system
OAKTOWN, IND.-ILL.
Edition of 1943

N 3845-W 8722.5/7.5

SEP 27 1943

U. S. G. S.
FILE COPY
Inspection and Editing.