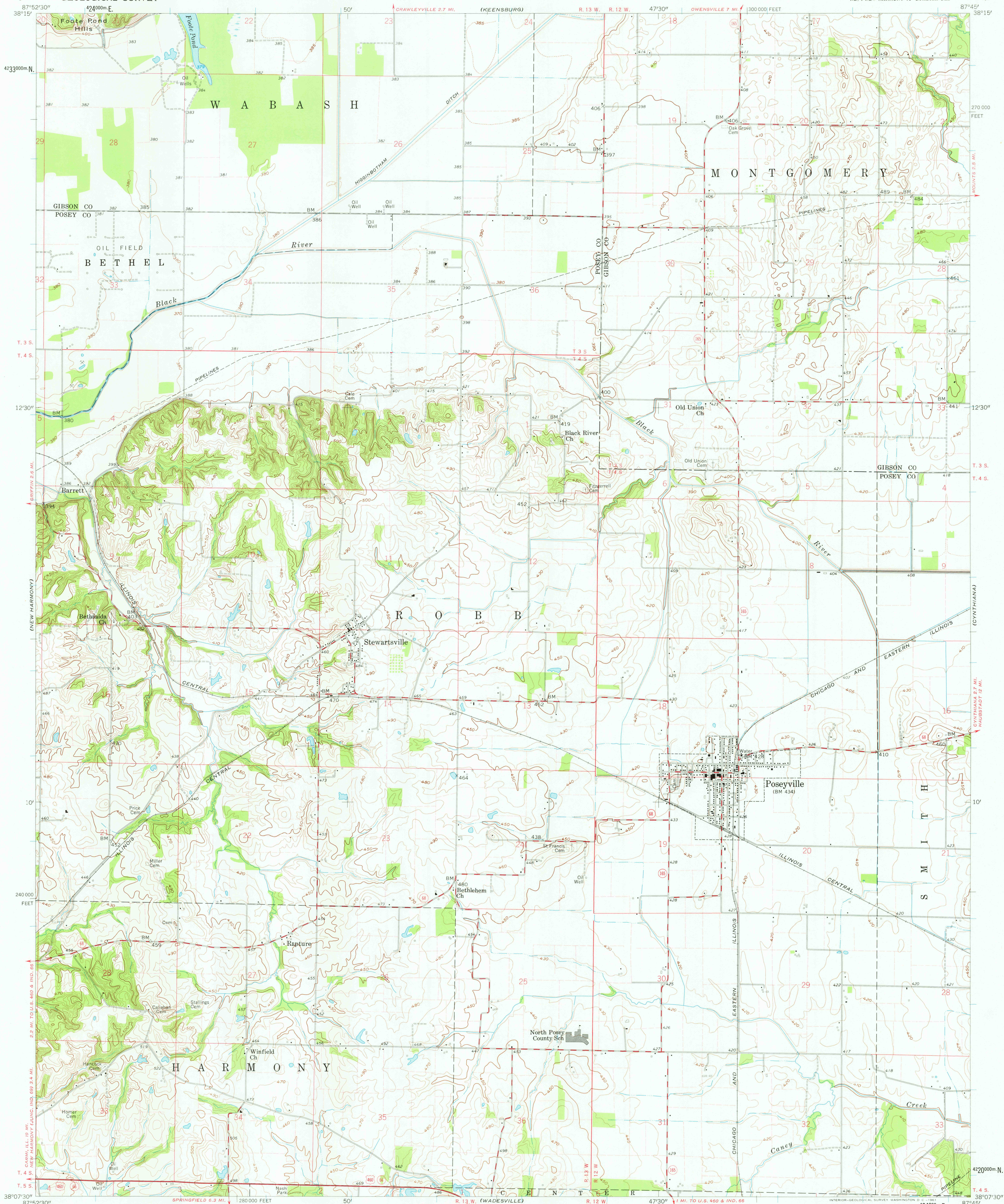


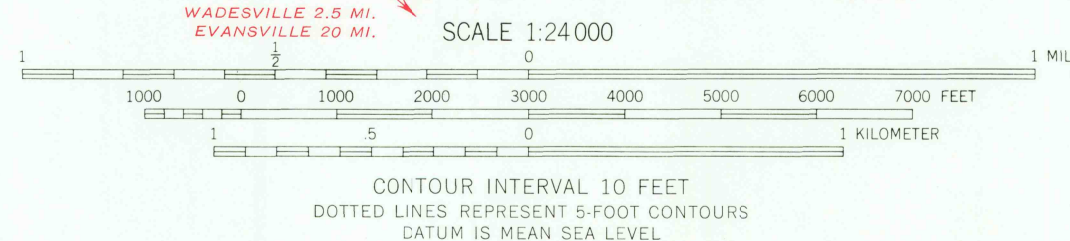
UNITED STATES  
DEPARTMENT OF THE INTERIOR  
GEOLOGICAL SURVEY

POSEYVILLE QUADRANGLE  
INDIANA  
7.5 MINUTE SERIES (TOPOGRAPHIC)  
NE 1/4 NEW HARMONY 15' QUADRANGLE



Mapped, edited, and published by the Geological Survey  
Control by USGS and USC&GS  
Topography from aerial photographs by photogrammetric methods  
and by planetable surveys 1959. Aerial photographs taken 1958  
Polyconic projection. 1927 North American datum  
10,000-foot grid based on Indiana coordinate system, west zone  
1000-meter Universal Transverse Mercator grid ticks,  
zone 16, shown in blue  
Fine red dashed lines indicate selected fence and field lines where  
generally visible on aerial photographs. This information is unchecked

TRUE NORTH  
MAGNETIC NORTH  
APPROXIMATE MEAN  
DECLINATION, 1959



THIS MAP COMPLIES WITH NATIONAL MAP ACCURACY STANDARDS  
FOR SALE BY U. S. GEOLOGICAL SURVEY, WASHINGTON 25, D. C.  
AND INDIANA DEPARTMENT OF CONSERVATION, INDIANAPOLIS, INDIANA  
A FOLDER DESCRIBING TOPOGRAPHIC MAPS AND SYMBOLS IS AVAILABLE ON REQUEST

ROAD CLASSIFICATION  
Heavy-duty ——— Light-duty ———  
Medium-duty ——— Unimproved dirt ———  
U. S. Route ——— State Route ———



USGS  
Historical File  
Topographic Division

POSEYVILLE, IND.  
NE 1/4 NEW HARMONY 15' QUADRANGLE  
N 3807.5-W 8745/7.5

1959

1700  
JUL 18 1977