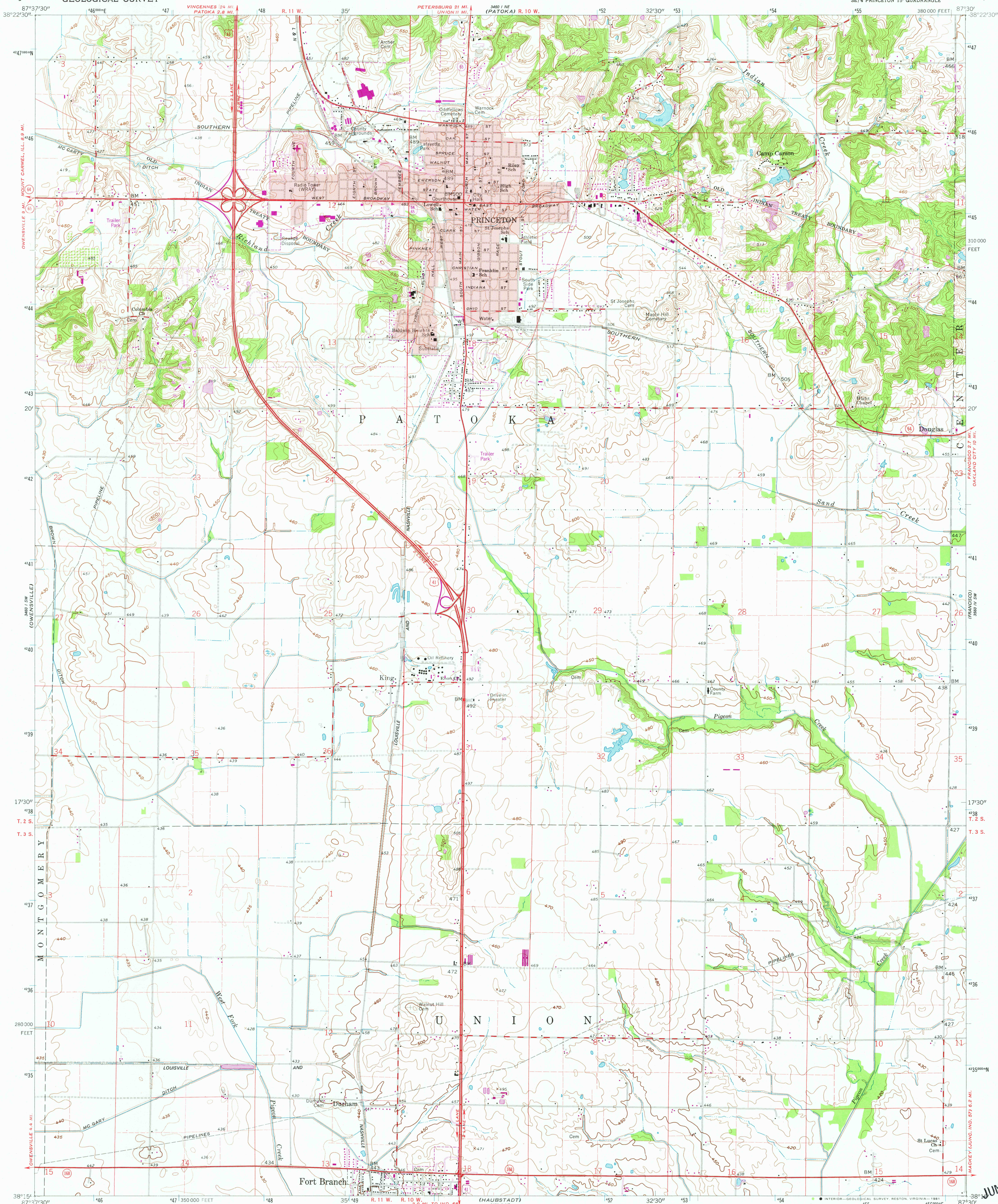


UNITED STATES
DEPARTMENT OF THE INTERIOR
GEOLOGICAL SURVEY

PRINCETON QUADRANGLE
INDIANA—GIBSON CO.
7.5 MINUTE SERIES (TOPOGRAPHIC)
SE 1/4 PRINCETON 15' QUADRANGLE



Mapped, edited, and published by the Geological Survey
Control by USGS and USC&GS

Topography from aerial photographs by photogrammetric methods
and by planetable surveys 1959. Aerial photographs taken 1958

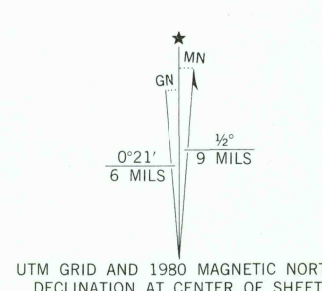
Polyconic projection
10,000-foot grid based on Indiana coordinate system, west zone
1000-meter Universal Transverse Mercator grid ticks,
zone 16, shown in blue. 1927 North American Datum

To place on the predicted North American Datum 1983
move the projection lines 3 meters south and
2 meters east as shown by dashed corner ticks

Fine red dashed lines indicate selected fence and field lines where
generally visible on aerial photographs. This information is unchecked

Red tint indicates areas in which only landmark buildings are shown

All wells shown are oil wells



SCALE 1:24,000

CONTOUR INTERVAL 10 FEET
DOTTED LINES REPRESENT 5-FOOT CONTOURS
NATIONAL GEODETIC VERTICAL DATUM OF 1929

THIS MAP COMPLIES WITH NATIONAL MAP ACCURACY STANDARDS
FOR SALE BY U. S. GEOLOGICAL SURVEY, RESTON, VIRGINIA 22092
AND INDIANA DEPARTMENT OF NATURAL RESOURCES, INDIANAPOLIS, INDIANA 46204
A FOLDER DESCRIBING TOPOGRAPHIC MAPS AND SYMBOLS IS AVAILABLE ON REQUEST

Revisions shown in purple compiled in cooperation with State
of Indiana agencies from aerial photographs taken 1977 and other
source data. This information not field checked. Map edited 1980

ROAD CLASSIFICATION
Heavy-duty ——— Light-duty ———
Medium-duty ——— Unimproved dirt ———
U.S. Route ——— State Route ———

PRINCETON, IND.
SE 1/4 PRINCETON 15' QUADRANGLE
N 3815—W 8730/7.5

1959
PHOTOREVISED 1980
DMA 3460 I SE—SERIES V85 I

JUN 01 1982

1600