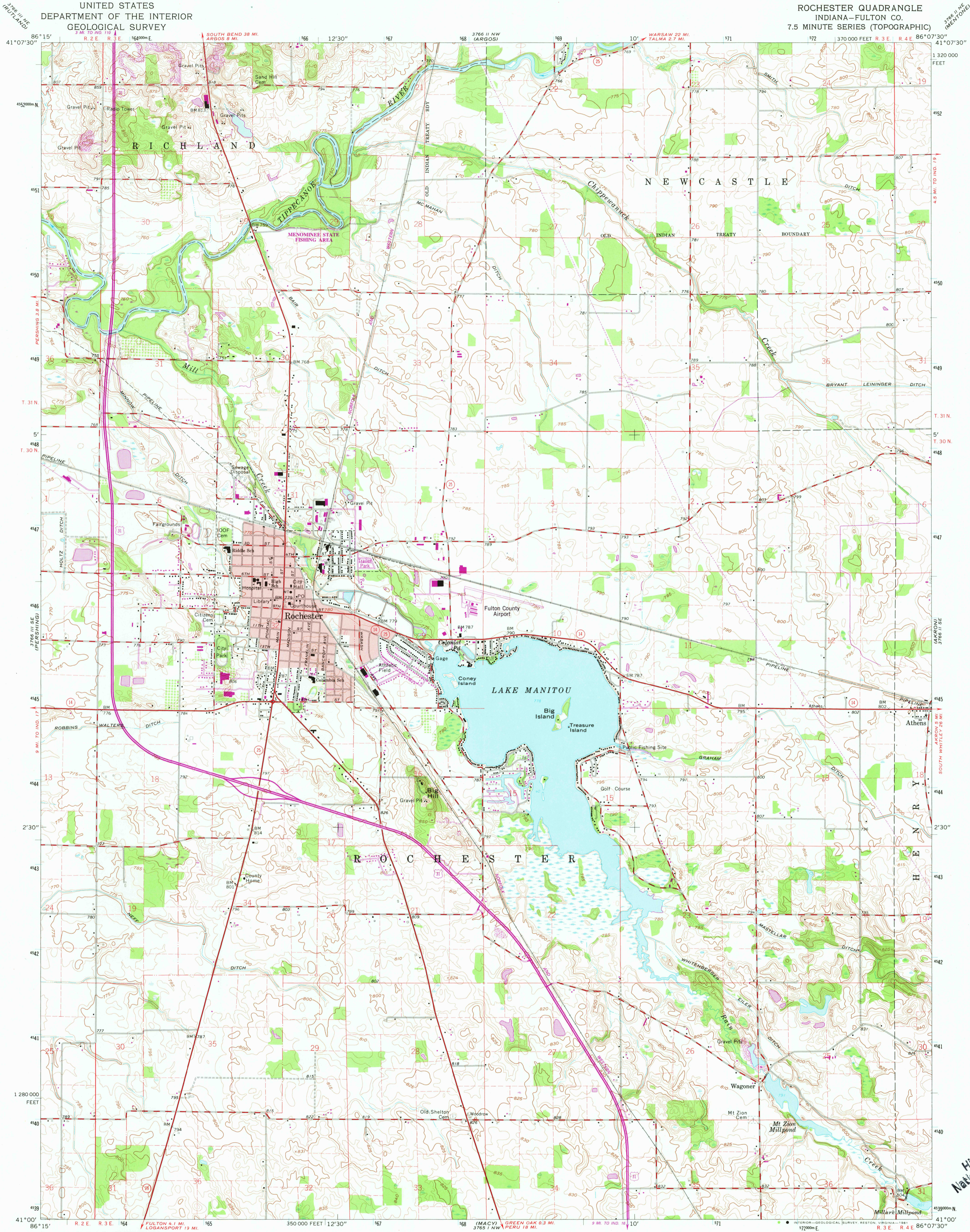


UNITED STATES
DEPARTMENT OF THE INTERIOR
GEOLOGICAL SURVEY

ROCHESTER QUADRANGLE
INDIANA—FULTON CO.
7.5 MINUTE SERIES (TOPOGRAPHIC)



Mapped, edited, and published by the Geological Survey

Control by USGS and NOS/NOAA

Topography by photogrammetric methods from aerial

photographs taken 1958. Field checked 1962

Polyconic projection. 10,000-foot grid based on

Indiana coordinate system, east zone

1000-meter Universal Transverse Mercator grid ticks,

zone 16, shown in blue. 1927 North American Datum

No adjustment is necessary to place the map on

the predicted North American Datum 1983

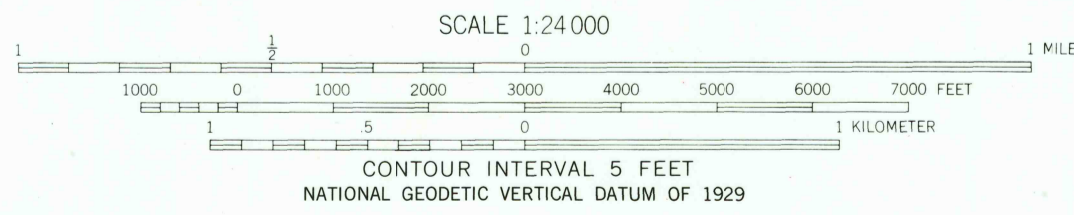
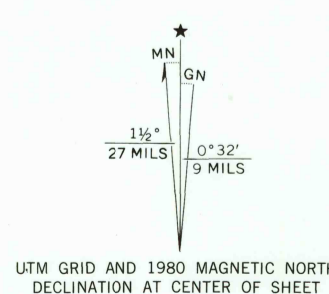
Fine red dashed lines indicate selected fence and field lines where

generally visible on aerial photographs. This information not checked

Red tint indicates area in which only landmark buildings are shown

There may be private inholdings within the boundaries of

the National or State reservations shown on this map



THIS MAP COMPLIES WITH NATIONAL MAP ACCURACY STANDARDS
FOR SALE BY U.S. GEOLOGICAL SURVEY, RESTON, VIRGINIA 22092
AND INDIANA DEPARTMENT OF NATURAL RESOURCES, INDIANAPOLIS, INDIANA 46204
A FOLDER DESCRIBING TOPOGRAPHIC MAPS AND SYMBOLS IS AVAILABLE ON REQUEST

Revisions shown in purple compiled in cooperation with State of
Indiana agencies from aerial photographs taken 1977 and other
source data. This information not field checked. Map edited 1980

ROAD CLASSIFICATION
Heavy-duty ——— Light-duty ———
Medium-duty ——— Unimproved dirt ———
U.S. Route ——— State Route ———



ROCHESTER, IND.
N4100—W8607.5/7.5

1962
PHOTOREVISED 1980
DMA 3766 II SW—SERIES V851

USGS
Historical File
National Mapping Div.

MAR 25 1981
2025