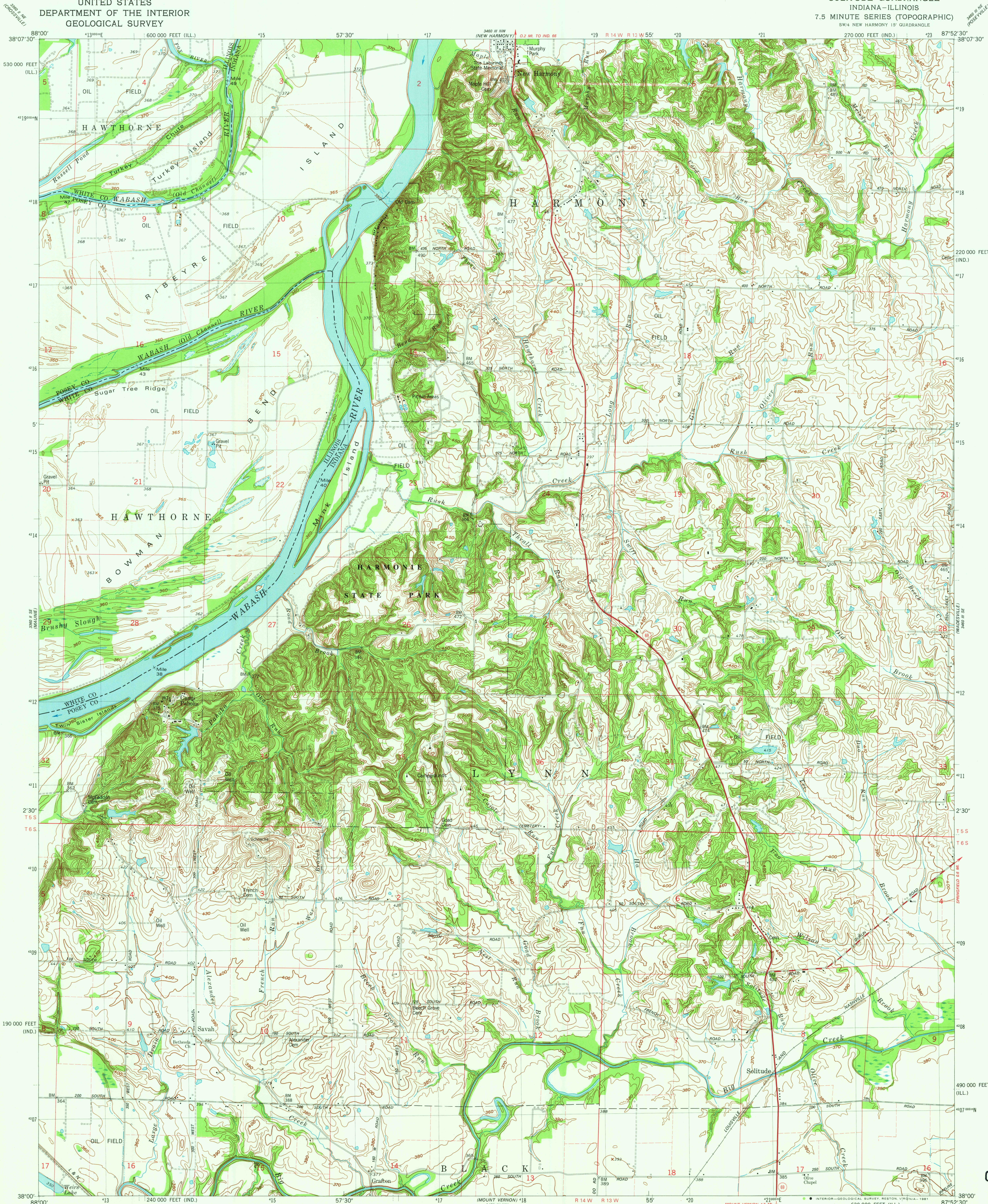
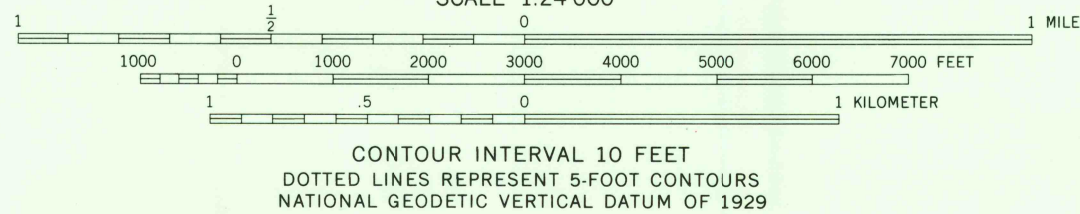
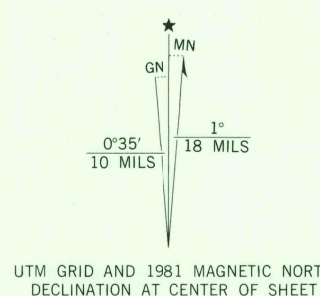


UNITED STATES
DEPARTMENT OF THE INTERIOR
GEOLOGICAL SURVEY

SOLITUDE QUADRANGLE
INDIANA-ILLINOIS
7.5 MINUTE SERIES (TOPOGRAPHIC)



Mapped, edited, and published by the Geological Survey in cooperation with the Illinois Institute of Natural Resources, Geological Survey Division. Control by USGS, NOS/NOAA, and USCE. Culture and drainage in part compiled from aerial photographs taken 1958. Topography by photogrammetric methods and by planimetric surveys 1959. Revised from aerial photographs taken 1973. Field checked 1976. Map edited 1981. Polyconic projection. 10,000-foot grid ticks based on Indiana coordinate system, west zone, and Illinois coordinate system, east zone 1000-meter Universal Transverse Mercator grid, zone 18 1927 North American Datum. To place on the predicted North American Datum 1983 move the projection lines 3 meters south and 3 meters east as shown by dashed corner ticks. Fine red dashed lines indicate selected fence and field lines where generally visible on aerial photographs. This information is unchecked. There may be private inholdings within the boundaries of the National or State reservations shown on this map. All wells shown are oil wells.



THIS MAP COMPLIES WITH NATIONAL MAP ACCURACY STANDARDS FOR SALE BY THE U.S. GEOLOGICAL SURVEY, RESTON, VIRGINIA 22092, INDIANA DEPARTMENT OF NATURAL RESOURCES, INDIANAPOLIS, INDIANA 46204, AND BY THE STATE GEOLOGICAL SURVEY, URBANA, ILLINOIS 61801. A FOLDER DESCRIBING TOPOGRAPHIC MAPS AND SYMBOLS IS AVAILABLE ON REQUEST.



ROAD CLASSIFICATION
Primary highway, hard surface
Secondary highway, hard surface
Light-duty road, hard or improved surface
Unimproved road
Interstate Route
U.S. Route
State Route

SOLITUDE, IND.-ILL.
SW/4 NEW HARMONY 15' QUADRANGLE
N3800-W8752.5/7.5

1981

DMA 3460 III SW-SERIES V85 I

OCT 28 1981

2850