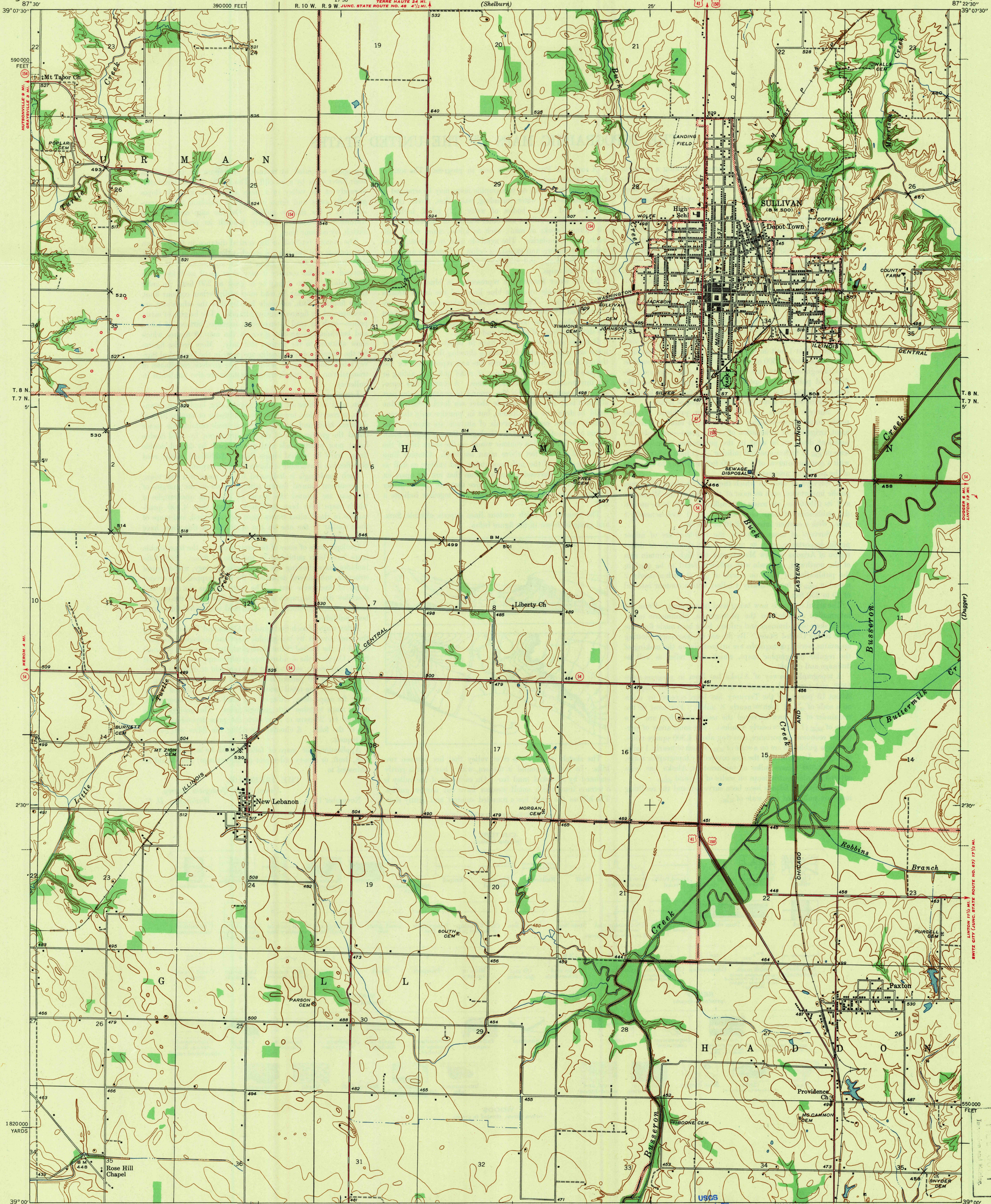


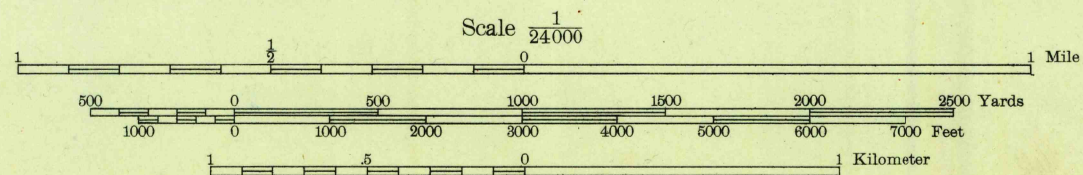
(Franklin)

(Hymers)



Topography by J. O. Kilmartin and Shirley Waggner Surveyed in 1941

TRUE NORTH  
MAGNETIC NORTH



Contour interval 10 feet  
Datum is mean sea level

USGS  
Historical File  
Topographic Division

ROUTES USUALLY TRAVELED  
HARD IMPERVIOUS SURFACES  
OTHER SURFACE IMPROVEMENTS  
U. S. ROUTE 1842  
STATE ROUTE  
OIL WELLS

Scale 1:24,000  
Mile  
Kilometer  
Polyconic projection. 1927 North American datum  
5000 yard grid based on U. S. zone system, C  
10000 foot grid based on Indiana (West)  
rectangular coordinate system

SULLIVAN, IND.  
N3900-W8722.5/7.5  
Edition of 1943

JAN 20 1943

1895