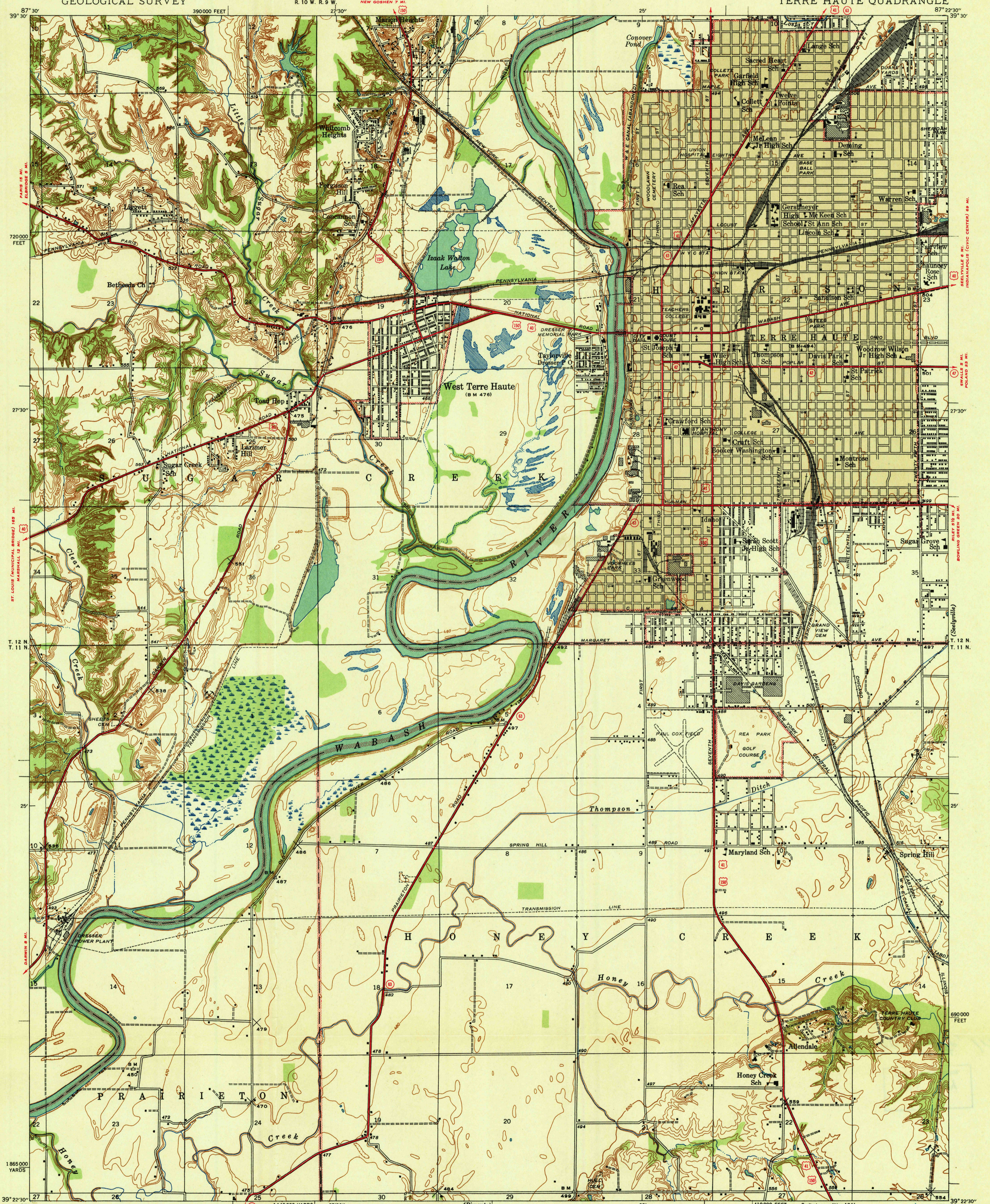


U.S.G.S.
FILE COPY
Inspection and Filing.

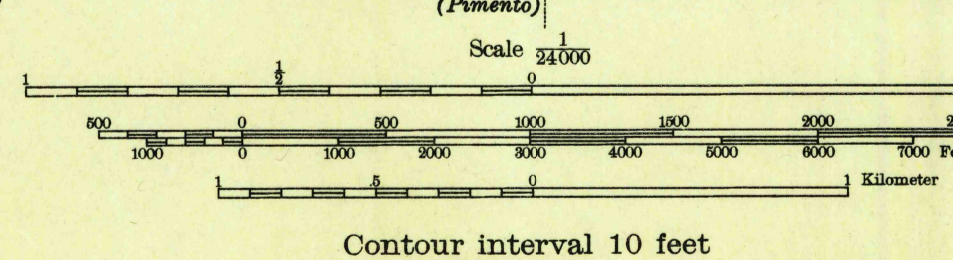
UNITED STATES
DEPARTMENT OF THE INTERIOR
GEOLOGICAL SURVEY

INDIANA
NORTH TERRE HAUTE 2 1/2 MI.
ROCKVILLE 2 1/2 MI.
(VIGO COUNTY)
TERRE HAUTE QUADRANGLE



Topography by Crawford Dickey and
Corps of Engineers, U. S. Army
Surveyed in 1929 and 1938-39
Gray tint indicates areas in which only
landmark buildings are shown

Scale 34,000
1:145,000 YARDS
R. 10 W. R. 9 W.
PRAIRIETON 1/2 MI.
PRAIRIE CREEK 1/2 MI.
U.S.G.S.



Scale 34,000
410,000 FEET
Preliminary edition 1941
FARMERSBURG 5 MI.
VINCENNES 5 1/2 MI.
Polyconic projection. 1927 North American datum
5000 yard grid based on U. S. zone system, C
10000 foot grid based on Indiana (West)
rectangular coordinate system

Contour interval 10 feet
Datum is mean sea level

ROUTES USUALLY TRAVELED
HARD IMPROVED SURFACES
OTHER SURFACE IMPROVEMENTS
1940
U. S. ROUTE
STATE ROUTE

USGS
Historical File
Topographic Division

TERRE HAUTE, IND.
N3922.5-W8722.5/7.5

U.S.G.S.
FILE COPY
Inspection and Filing.

MAY 5 - 1941