

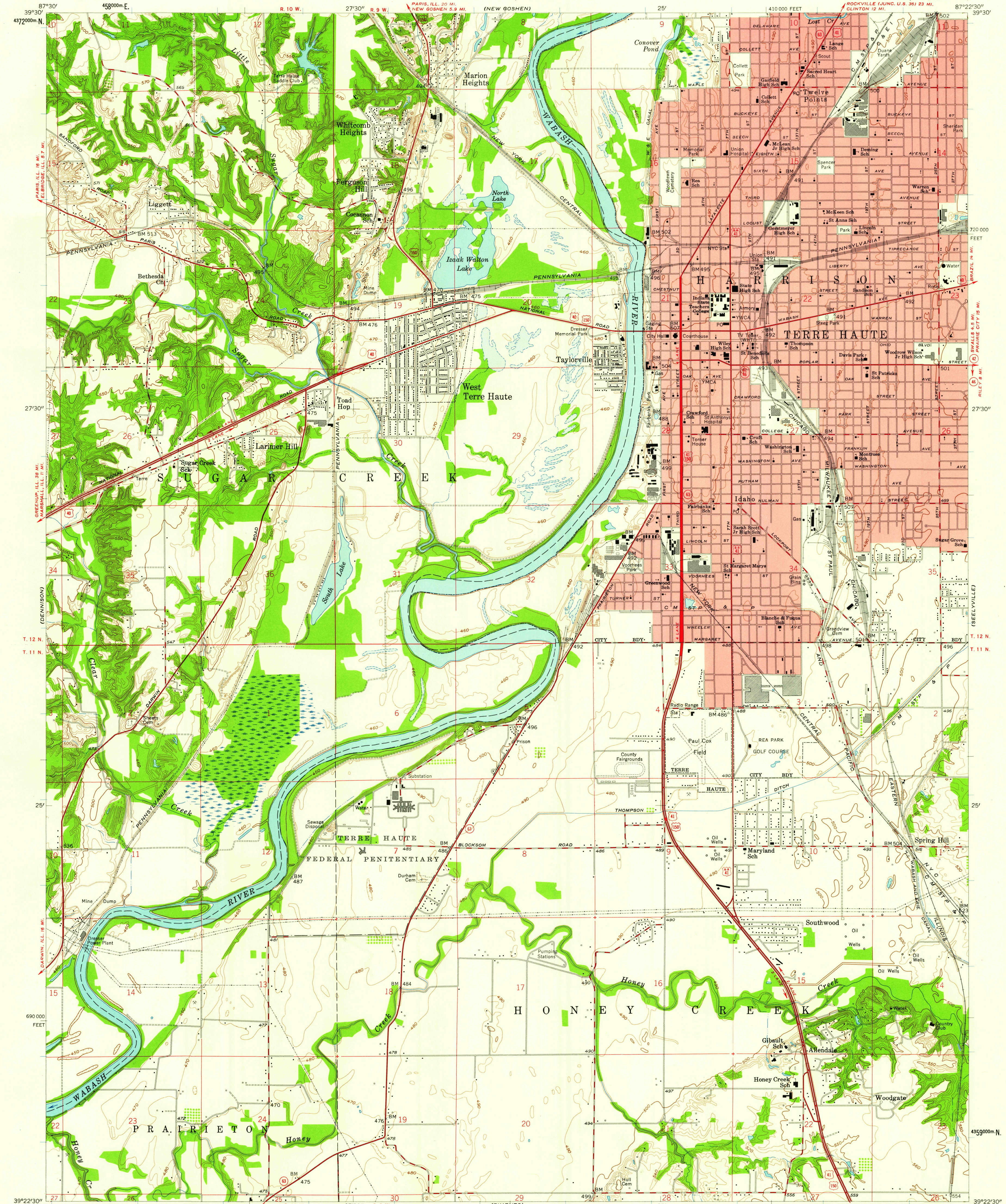
(SANDFORD)
39°30'
437200m N.

UNITED STATES
DEPARTMENT OF THE INTERIOR
GEOLOGICAL SURVEY

STATE OF INDIANA
INDIANA DEPARTMENT OF CONSERVATION
INDIANAPOLIS, INDIANA

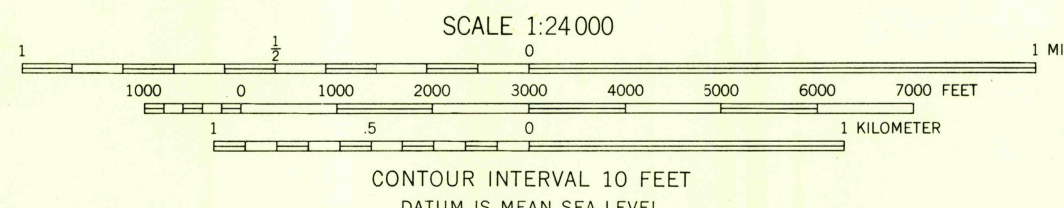
TERRE HAUTE QUADRANGLE
INDIANA—VIGO CO
7.5 MINUTE SERIES (TOPOGRAPHIC)

(ROBEDALE)
87°22'30"
39°30'



Maped by the Geological Survey and U.S. Corps of Engineers
Edited and published by the Geological Survey
Control by USGS, USC&GS, and USCE
Topography by planetable surveys 1929, 1938, and 1939
Culture revised 1958
Polyconic projection. 1927 North American datum
10,000-foot grid based on Indiana coordinate system, west zone
1000-meter Universal Transverse Mercator grid ticks,
zone 16, shown in blue
Red tint indicates area in which only
landmark buildings are shown

TRUE NORTH
MAGNETIC NORTH
APPROXIMATE MEAN
DECLINATION, 1958



FOR SALE BY U.S. GEOLOGICAL SURVEY, WASHINGTON 25, D. C.
AND INDIANA DEPARTMENT OF CONSERVATION, INDIANAPOLIS, INDIANA
A FOLDER DESCRIBING TOPOGRAPHIC MAPS AND SYMBOLS IS AVAILABLE ON REQUEST

USGS
Historical File
Topographic Division



U.S.G.S.
FILE COPY
TOPOGRAPHIC DIVISION

ROAD CLASSIFICATION
Heavy-duty ——— Light-duty ———
Med-um-duty ——— Unimproved dirt ———
U.S. Route ——— State Route ———

TERRE HAUTE, IND.
N3922.5—W8722.5/7.5
1958

DEC 29 1958
4550