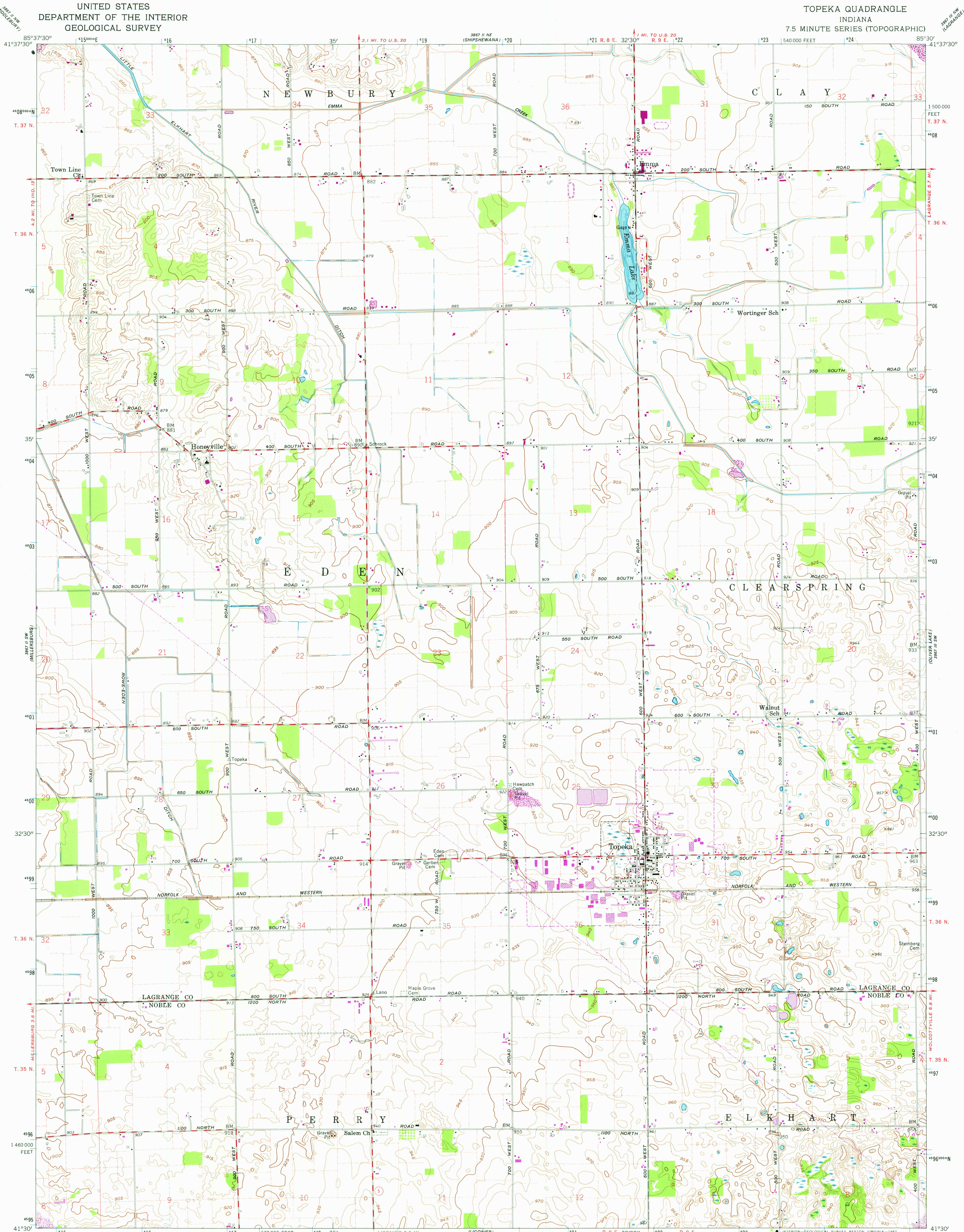


UNITED STATES
DEPARTMENT OF THE INTERIOR
GEOLOGICAL SURVEY

TOPEKA QUADRANGLE
INDIANA
7.5 MINUTE SERIES (TOPOGRAPHIC)



Mapped, edited, and published by the Geological Survey

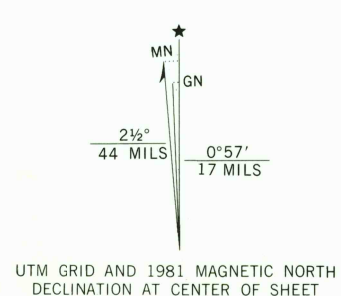
Control by USGS and NOS/NOAA

Culture and drainage in part compiled from aerial photographs taken 1957. Topography by planetable surveys 1959

Polyconic projection. 10,000-foot grid ticks based on Indiana coordinate system, east zone. 1000-meter Universal Transverse Mercator grid ticks, zone 16, shown in blue. 1927 North American Datum. No adjustment is necessary to place this map on the predicted North American Datum 1983

Fine red dashed lines indicate selected fence and field lines where generally visible on aerial photographs. This information is unchecked

Depth curves compiled from USGS-Indiana Department of Conservation lake charts



CONTOUR INTERVAL 5 FEET
NATIONAL GEODETIC VERTICAL DATUM OF 1929

THIS MAP COMPLIES WITH NATIONAL MAP ACCURACY STANDARDS
FOR SALE BY U.S. GEOLOGICAL SURVEY, RESTON, VIRGINIA 22092
AND INDIANA DEPARTMENT OF NATURAL RESOURCES, INDIANAPOLIS, INDIANA 46204
A FOLDER DESCRIBING TOPOGRAPHIC MAPS AND SYMBOLS IS AVAILABLE ON REQUEST

Revisions shown in purple and woodland compiled in cooperation with State of Indiana agencies from aerial photographs taken 1979 and other sources. This information is unchecked. Map edited 1981

ROAD CLASSIFICATION
Medium-duty ——— Light-duty ———
Unimproved dirt ———
State Route ○

TOPEKA, IND.
N4130—W8300/7.5
1959
PHOTOREVISED 1981
DMA 3867 II SE—SERIES V851

SEP 22 1982

2378