

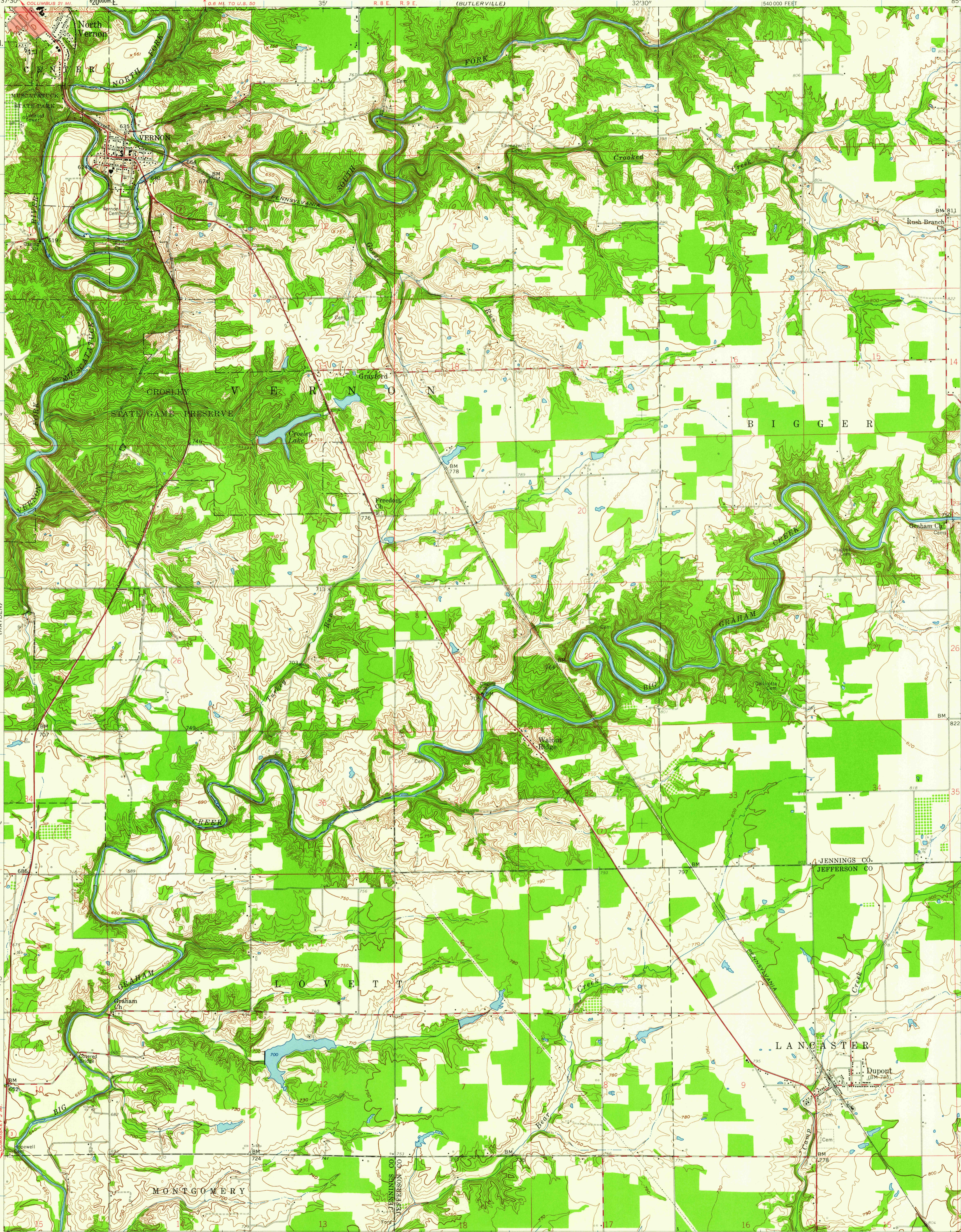
(NORTH VERNON)
85°37'30"
39°00'
4317000 N
57°30'
55'
510 000 FEET
38°52'30"
85°37'30"

UNITED STATES
DEPARTMENT OF THE INTERIOR
GEOLOGICAL SURVEY

STATE OF INDIANA
INDIANA DEPARTMENT OF CONSERVATION
INDIANAPOLIS, INDIANA

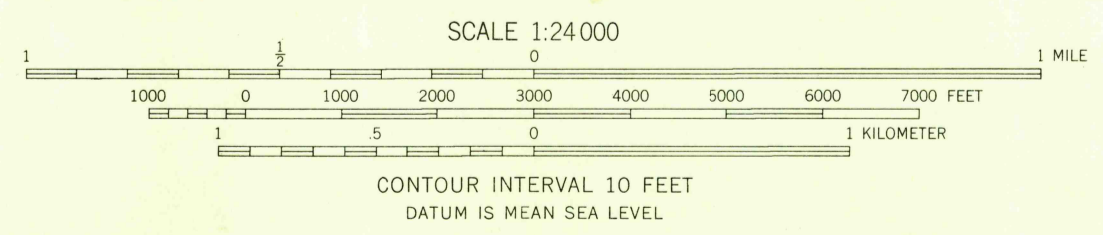
VERNON QUADRANGLE
INDIANA
7.5 MINUTE SERIES (TOPOGRAPHIC)

(HOLTON)
540 000 FEET
57°30'
20
35
T. 6 N.
T. 5 N.
4304000 N.
38°52'30"



Mapped, edited, and published by the Geological Survey
Control by USGS, USCGS, and Indiana Flood Control and
Water Resources Commission
Topography from aerial photographs by photogrammetric methods
Aerial photographs taken 1956. Field check 1959
Polyconic projection. 1927 North American datum
10,000-foot grid based on Indiana coordinate system, east zone
1000-meter Universal Transverse Mercator grid ticks,
zone 16, shown in blue
Red tint indicates area in which only
landmark buildings are shown
Unchecked elevations are shown in brown

TRUE NORTH
MAGNETIC NORTH
APPROXIMATE MEAN
DECLINATION, 1959



USGS
Historical File
Topographic Division

ROAD CLASSIFICATION
Heavy-duty ——— Light-duty ———
Medium-duty ——— Unimproved dirt ———
○ State Route



THIS MAP COMPLIES WITH NATIONAL MAP ACCURACY STANDARDS
FOR SALE BY U.S. GEOLOGICAL SURVEY, WASHINGTON 25, D. C.
AND INDIANA DEPARTMENT OF CONSERVATION, INDIANAPOLIS, INDIANA
A FOLDER DESCRIBING TOPOGRAPHIC MAPS AND SYMBOLS IS AVAILABLE ON REQUEST

VERNON, IND.
N3852.5-W8530/7.5
1959

AUG 17 1960
2415