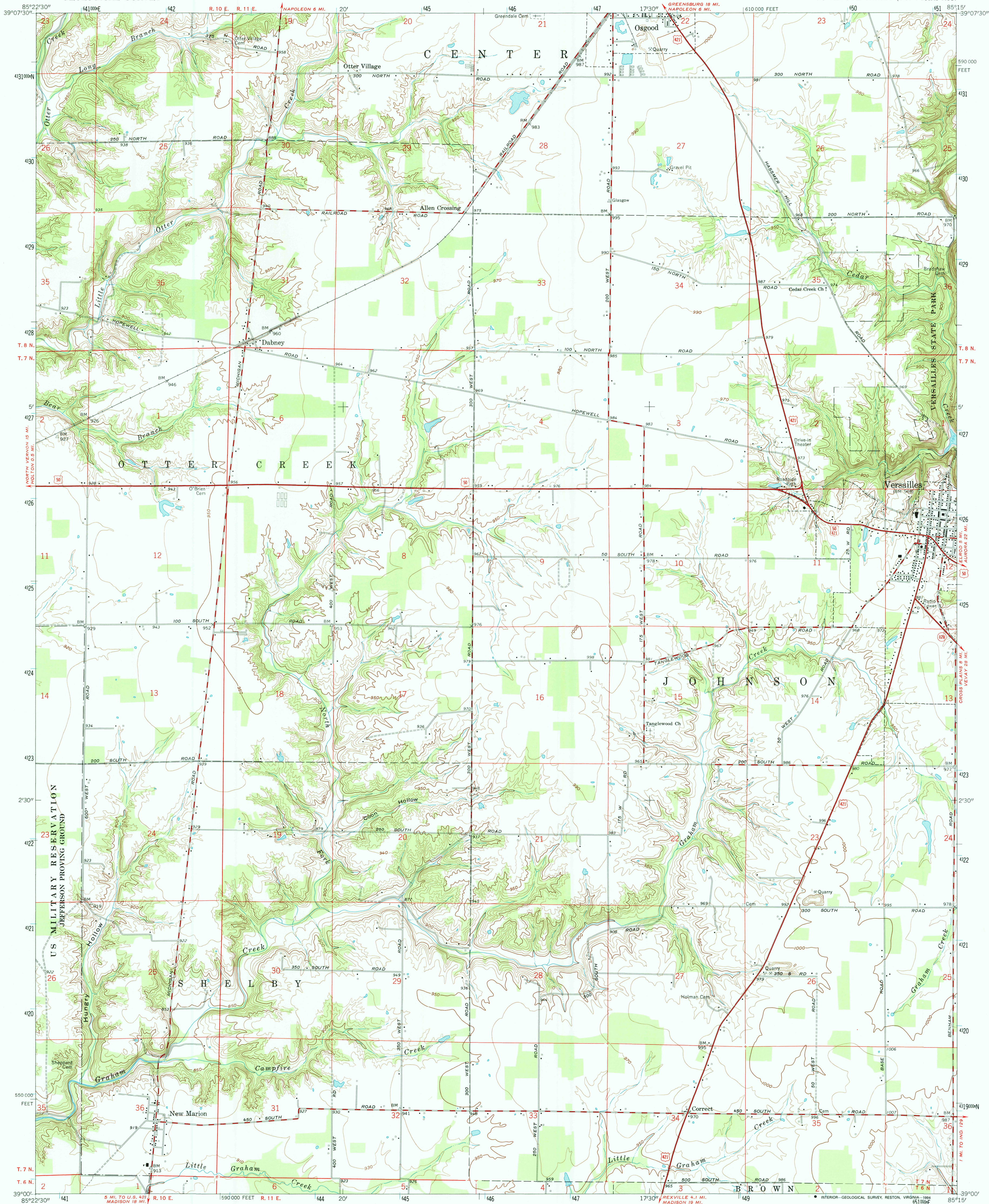
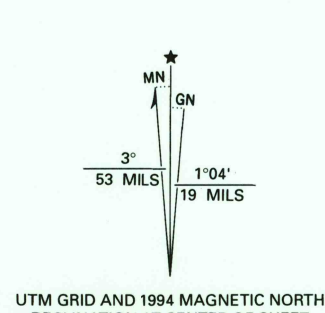


UNITED STATES
DEPARTMENT OF THE INTERIOR
GEOLOGICAL SURVEY

VERSAILLES QUADRANGLE
INDIANA—RIPLEY CO.
7.5 MINUTE SERIES (TOPOGRAPHIC)



Produced by the U. S. Geological Survey
in cooperation with Indiana Department of Natural Resources
Control by USGS and NOS/NOAA
Topography by planetable surveys 1943. Revised 1961
Projection and 10,000-foot grid ticks: Indiana coordinate
system, east zone (transverse Mercator)
1000-meter Universal Transverse Mercator grid ticks, zone 16, shown in blue
1927 North American Datum (NAD 27)
North American Datum of 1983 (NAD 83) is shown by dashed corner ticks
The values of the shift between NAD 27 and NAD 83 for 7.5-minute
intersections are given in USGS Bulletin 1875
There may be private holdings within the boundaries of
the National or State reservations shown on this map
Photinspected from 1992 source; no major culture or drainage
changes observed. Boundaries and names revised 1994



SCALE 1:24,000
CONTOUR INTERVAL 10 FEET
NATIONAL GEODETIC VERTICAL DATUM OF 1929
THIS MAP COMPLIES WITH NATIONAL MAP ACCURACY STANDARDS
FOR SALE BY U. S. GEOLOGICAL SURVEY, DENVER, COLORADO 80225, OR RESTON, VIRGINIA 22092
AND INDIANA DEPARTMENT OF NATURAL RESOURCES, INDIANAPOLIS, INDIANA 46204
A FOLDER DESCRIBING TOPOGRAPHIC MAPS AND SYMBOLS IS AVAILABLE ON REQUEST

1	2	3	1 Millhouse
4	5	2 Osgood	2 Pierceville
6	7	3 Osgood	3 Holton
		4 Milan	4 San Jacinto
		5 San Jacinto	5 Rexville
		6 Rexville	6 Cross Plains
		7 Cross Plains	

ROAD CLASSIFICATION
Heavy-duty ——— Light-duty ———
Medium-duty ——— Unimproved dirt ———
State Route ———
U.S. Route
VERSAILLES, IND.
39085-A3-TF-024
1961
MINOR REVISION 1994
DMA 3962 III SE-SERIES V851