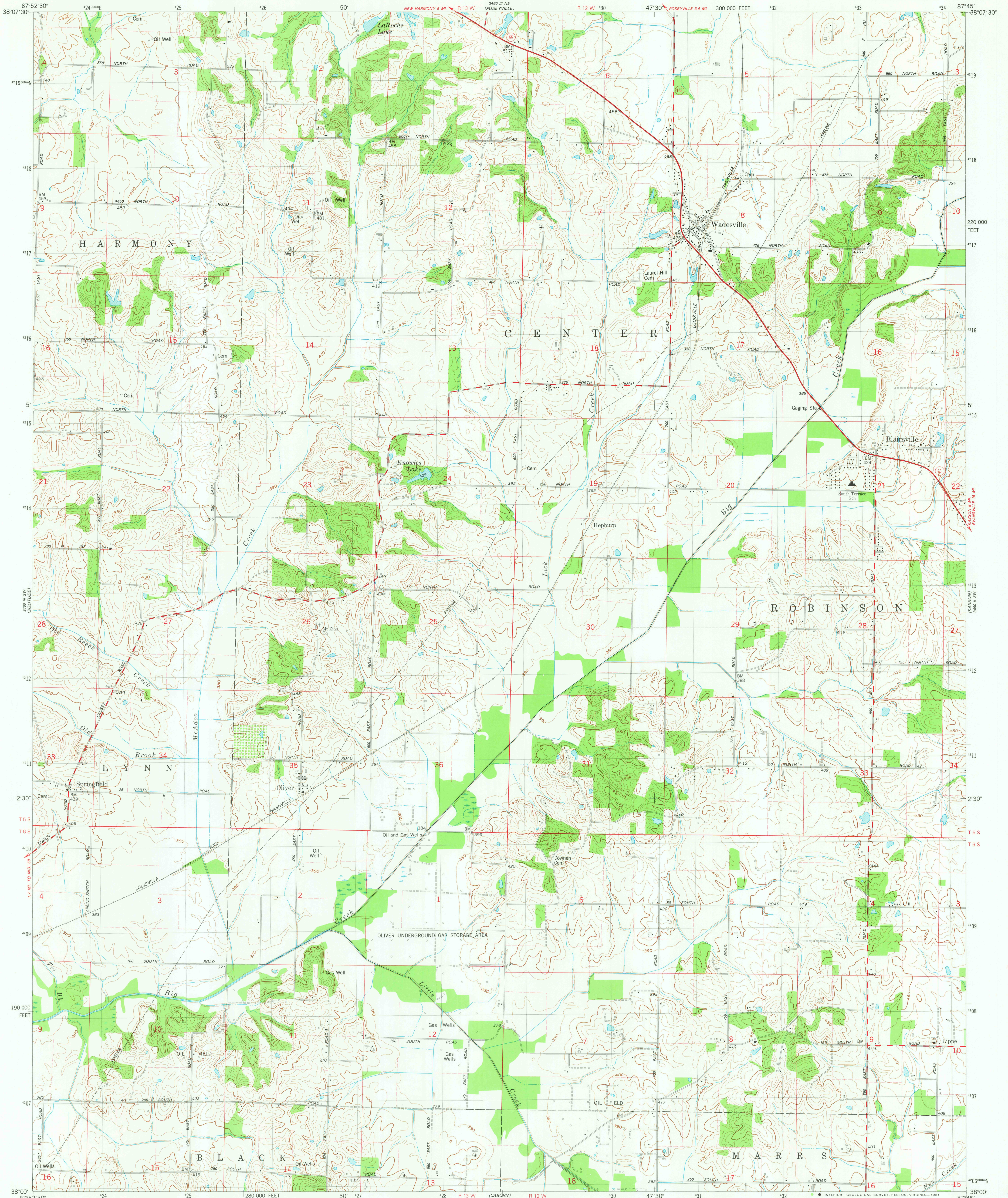
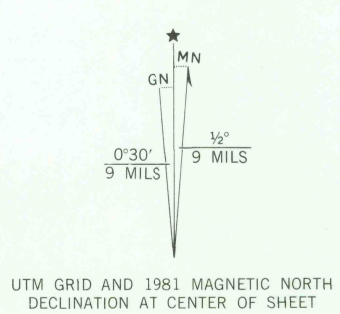


UNITED STATES
DEPARTMENT OF THE INTERIOR
GEOLOGICAL SURVEY

WADESVILLE QUADRANGLE
INDIANA-POSEY CO.
7.5 MINUTE SERIES (TOPOGRAPHIC)
SE 1/4 NEW HARMONY 15' QUADRANGLE



Mapped, edited, and published by the Geological Survey
Control by USGS and NOS/NOAA
Topography by photogrammetric methods from aerial photographs
taken 1958 and planetable surveys 1959. Revised from aerial photographs
taken 1973. Field checked 1975 and 1976. Map edited 1981
Polyconic projection. 10,000-foot grid ticks based
on Indiana coordinate system, west zone
1000-meter Universal Transverse Mercator grid, zone 16
1927 North American Datum
To place on the predicted North American Datum 1983
move the projection lines 3 meters south and
3 meters east as shown by dashed corner ticks
Fine red dashed lines indicate selected fence and field lines where
generally visible on aerial photographs. This information is unchecked



SCALE 1:24 000
1 000 0 1000 2000 3000 4000 5000 6000 7000 FEET
1 0 5 10 KILOMETER
CONTOUR INTERVAL 10 FEET
NATIONAL GEODETIC VERTICAL DATUM OF 1929



ROAD CLASSIFICATION
Primary highway, hard surface
Secondary highway, hard surface
Unimproved road
Interstate Route
U. S. Route
State Route

WADESVILLE, IND.
SE 1/4 NEW HARMONY 15' QUADRANGLE
N3800-W8745/7.5

1981
DMA 3460 III SE-SERIES V851

OCT 28 1981

1900