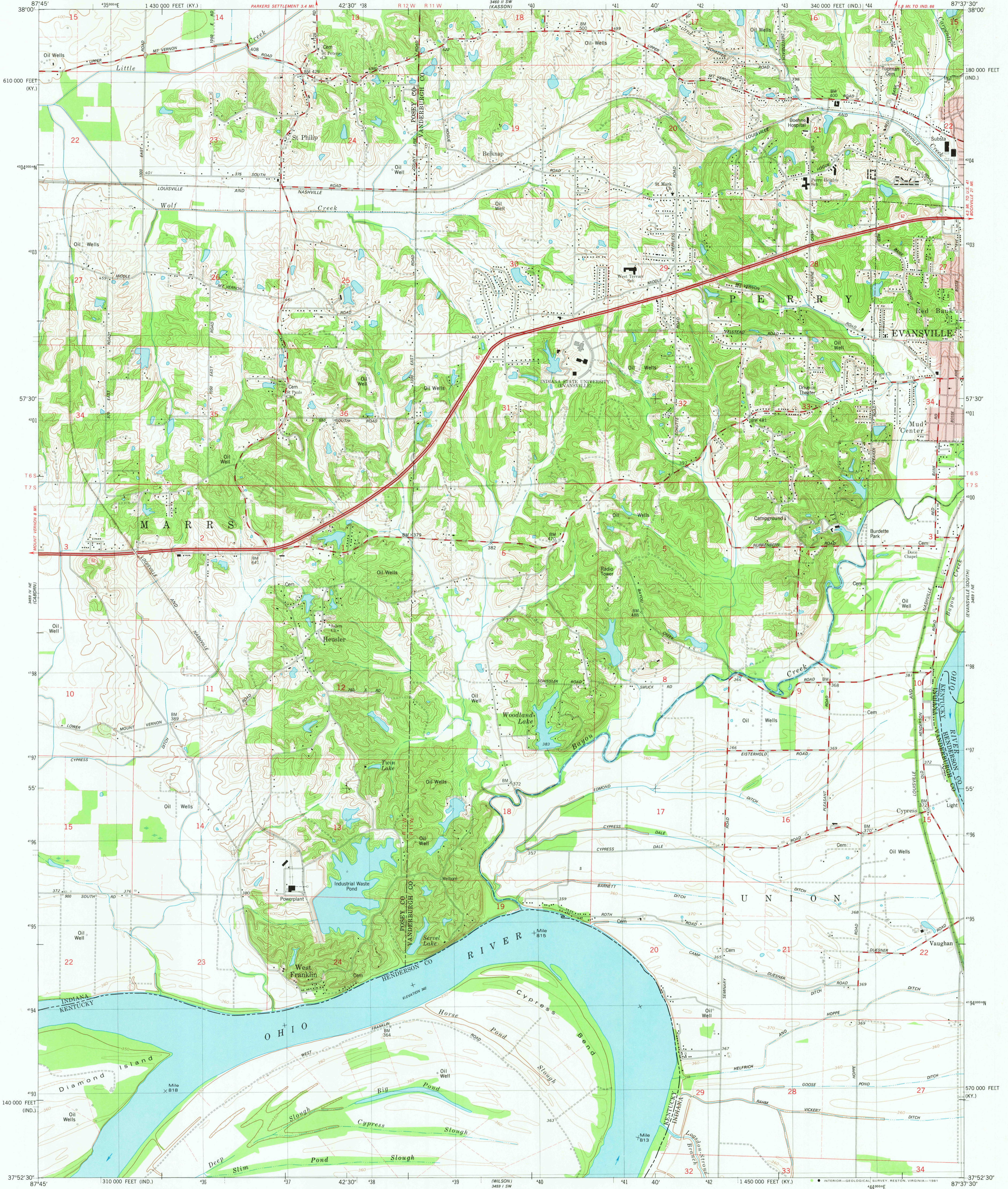


UNITED STATES
DEPARTMENT OF THE INTERIOR
GEOLOGICAL SURVEY

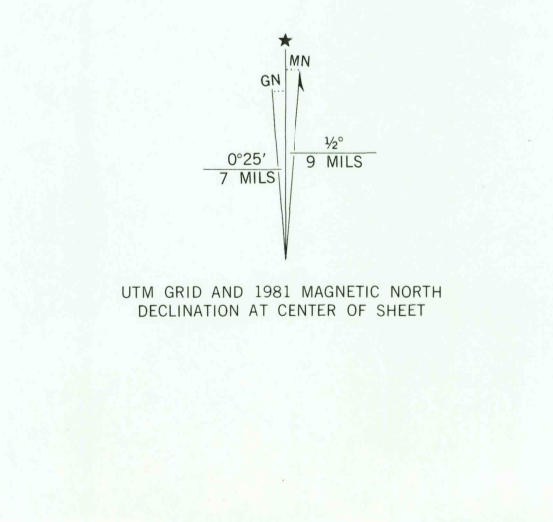
WEST FRANKLIN QUADRANGLE
INDIANA-KENTUCKY
7.5 MINUTE SERIES (TOPOGRAPHIC)
NW 4 HENDERSON 15' QUADRANGLE



Mapped, edited, and published by the Geological Survey in cooperation with Indiana Department of Natural Resources and Kentucky Geological Survey. Control by USGS, NOS/NOAA, and USCE. Culture and drainage in part compiled from aerial photographs taken 1950 (Kentucky) and 1956 (Indiana). Indiana topography by photogrammetric methods and plane-table surveys 1957. Kentucky topography by plane-table surveys 1952. Revised from aerial photographs taken 1973 and 1974. Field checked 1976. Map edited 1981.

Polyconic projection. 10,000-foot grid ticks based on Indiana coordinate system, west zone, and Kentucky coordinate system, south zone 1000-meter Universal Transverse Mercator grid, zone 16. 1927 North American Datum. To place on the predicted North American Datum 1983 move the projection lines 3 meters south and 2 meters east as shown by dashed corner ticks.

The state boundary as shown represents the approximate position of the low waterline as determined from U. S. Corps of Engineers, Ohio River charts, surveyed 1912-13, and supplementary information. Fine red dashed lines indicate selected fence and field lines where generally visible on aerial photographs. This information is unchecked. Red tint indicates areas in which only landmark buildings are shown. All wells shown are oil wells.



THIS MAP COMPLIES WITH NATIONAL MAP ACCURACY STANDARDS FOR SALE BY U. S. GEOLOGICAL SURVEY, RESTON, VIRGINIA 22092, INDIANA DEPARTMENT OF NATURAL RESOURCES, INDIANAPOLIS, INDIANA 46204, KENTUCKY GEOLOGICAL SURVEY, LEXINGTON, KENTUCKY 40506, AND KENTUCKY DEPARTMENT OF COMMERCE, FRANKFORT, KENTUCKY 40601. A FOLDER DESCRIBING TOPOGRAPHIC MAPS AND SYMBOLS IS AVAILABLE ON REQUEST.

ROAD CLASSIFICATION

Primary highway, hard surface	Light duty road, hard or improved surface
Secondary highway, hard surface	Unimproved road
Interstate Route	U. S. Route
	State Route

NOV 30 1981

WEST FRANKLIN, IND.-KY.
NW 4 HENDERSON 15' QUADRANGLE
N3752.5-W8737.5/7.5

1981
DMA 3459 1 NW-SERIES V851