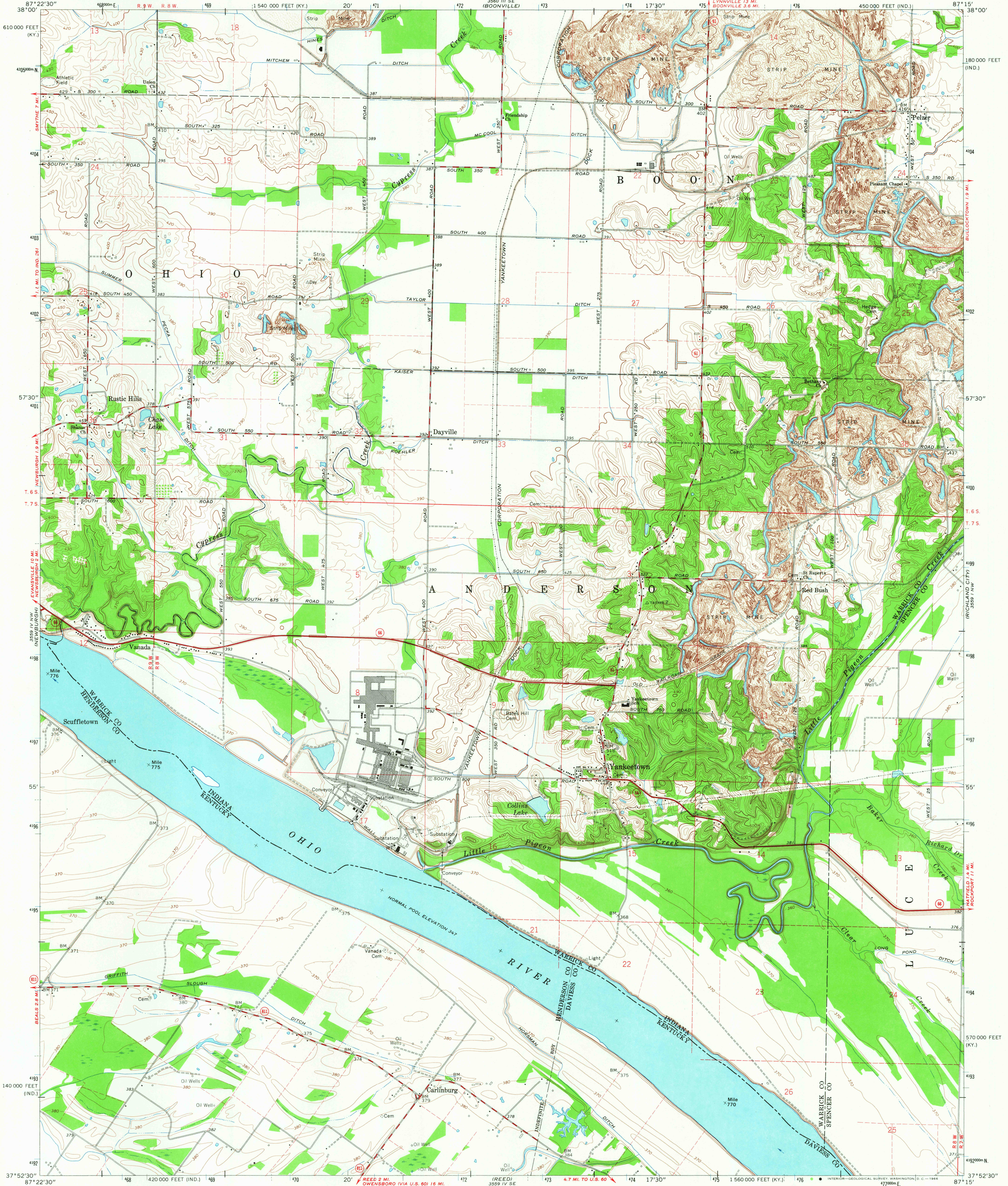
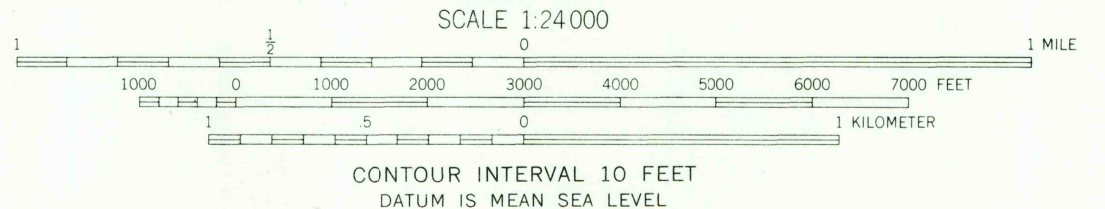
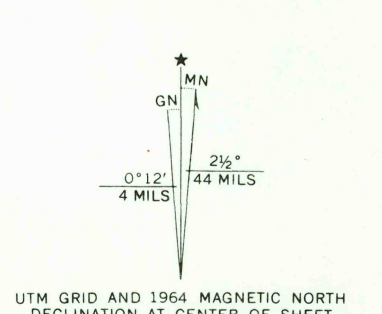


UNITED STATES
DEPARTMENT OF THE INTERIOR
GEOLOGICAL SURVEY

YANKEETOWN QUADRANGLE
INDIANA-KENTUCKY
7.5 MINUTE SERIES (TOPOGRAPHIC)
NE 1/4 NEWBURGH 15' QUADRANGLE



Mapped, edited, and published by the Geological Survey in cooperation with Kentucky Geological Survey Revised in cooperation with Indiana Department of Natural Resources Control by USGS, USC&GS, and USCE
Planimetry by photogrammetric methods from aerial photographs taken 1950. Topography by planetable surveys 1951. Revised 1964
Polyconic projection. 1927 North American datum 10,000-foot grids based on Indiana coordinate system, west zone, and Kentucky coordinate system, south zone 1000-meter Universal Transverse Mercator grid ticks, zone 16, shown in blue
Fine red dashed lines indicate selected fence and field lines where generally visible on aerial photographs. This information is unchecked
The state boundary as shown represents the approximate position of the low water line as determined from U. S. Corps of Engineers Ohio River Charts, surveyed 1912-1913, and supplementary information



USGS
Historical File
Topographic Division



ROAD CLASSIFICATION
Heavy-duty ——— Light-duty ———
Medium-duty - - - - - Unimproved dirt - - - - -
○ State Route

YANKEETOWN, IND.-KY.
NE 1/4 NEWBURGH 15' QUADRANGLE
N 3752.5—W 8715.7.5
1964
AMS 5559 IV NE—SERIES V851

THIS MAP COMPLIES WITH NATIONAL MAP ACCURACY STANDARDS
FOR SALE BY U. S. GEOLOGICAL SURVEY, WASHINGTON, D. C. 20242
AND INDIANA DEPARTMENT OF NATURAL RESOURCES, INDIANAPOLIS, INDIANA
AND KENTUCKY DEPARTMENT OF COMMERCE, FRANKFORT, KENTUCKY
A FOLDER DESCRIBING TOPOGRAPHIC MAPS AND SYMBOLS IS AVAILABLE ON REQUEST

JAN 3 1967
2700