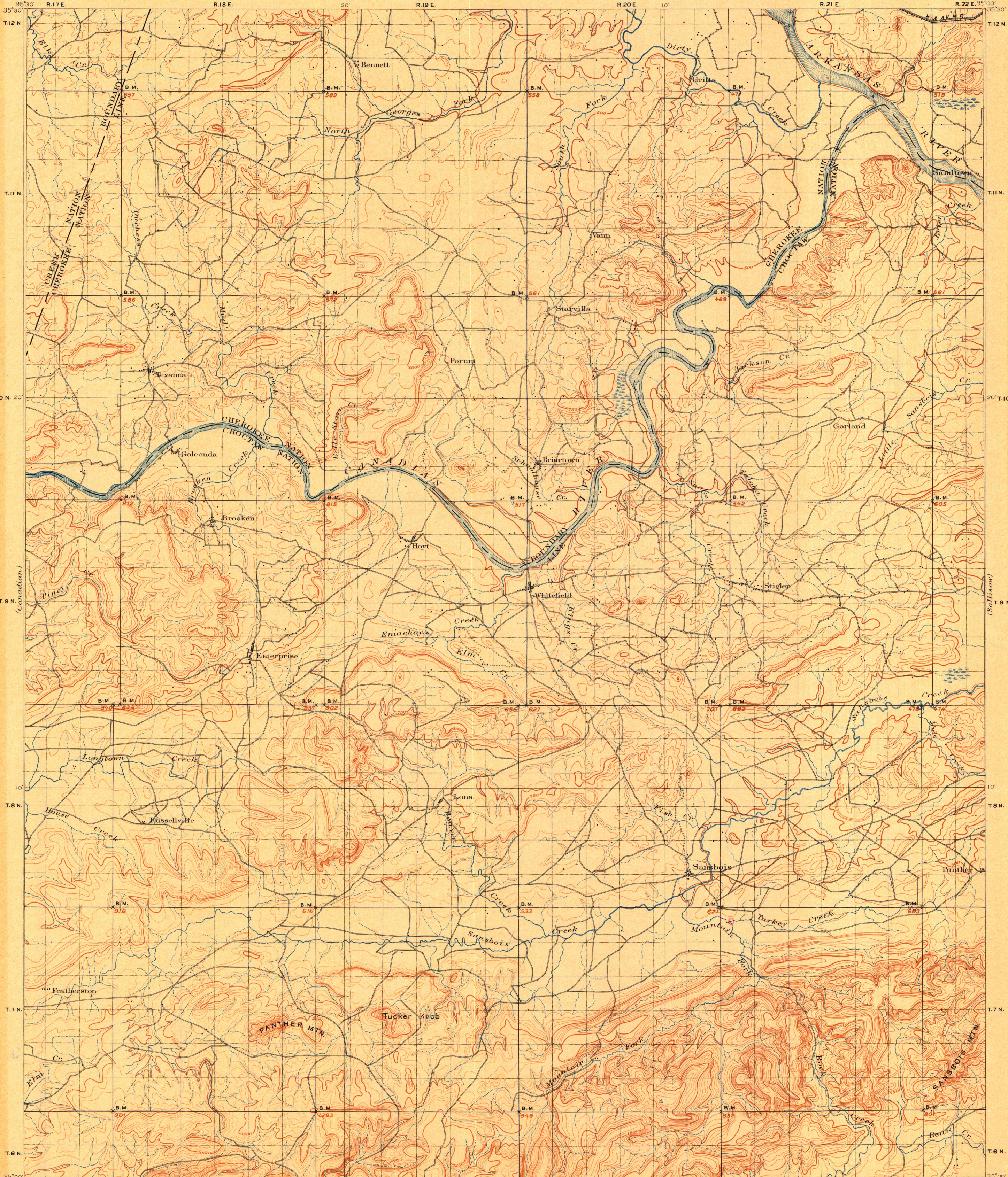


TOPOGRAPHIC SHEET

U.S. GEOLOGICAL SURVEY
CHARLES D. WALCOTT, DIRECTOR



(Mc. Master)
C. H. Fitch, Topographer in charge.
Van H. Manning, Topographer Assistant in charge.
Triangulation by C. F. Orquhart.
Topography by W. B. Corse, R. A. Farmer and J. Ahern.
Surveyed in 1896-97.

J. Ahern
B. A. Farmer
W. B. Corse

Scale 1:25000
1 1/2 0 1 2 3 4 5 Miles
1 1/2 0 1 2 3 4 5 Kilometers
Contour interval 50 feet.
Datum is mean sea level.

Edition of Aug. 1900.

SANSBOIS, OKLA.