

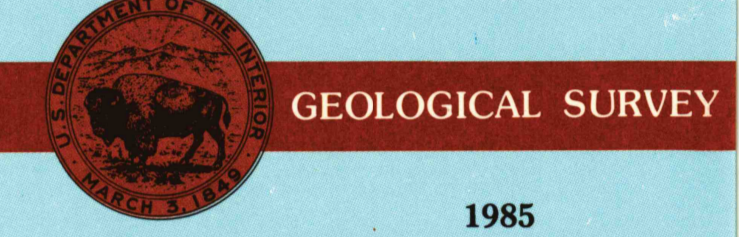
# Beloit KANSAS

1:100 000-scale metric topographic map



### 30 X 60 MINUTE QUADRANGLE SHOWING

- Contours and elevations in meters
- Highways, roads and other manmade structures
- Water features
- Woodland areas
- Geographic names



Produced by the United States Geological Survey  
 Compiled from USGS 1:24 000-scale topographic maps dated 1953-1980. Planimetry revised from aerial photographs taken 1981 and other source data. Revised information not field checked. Map edited 1985.  
 Projection and 10 000-meter grid, zone 14, Universal Transverse Mercator  
 25 000-foot grid ticks based on Kansas coordinate system, north zone  
 1927 North American Datum  
 To place on the predicted North American Datum 1983, move the projection lines 3 meters north and 30 meters east  
 There may be private inholdings within the boundaries of the National or State reservations shown on this map  
 Map photoinspected using 1985 photographs  
 No major culture or drainage changes found  
 CONTOUR INTERVAL 10 METERS  
 NATIONAL GEODETIC VERTICAL DATUM OF 1929  
 ELEVATIONS SHOWN TO THE NEAREST METER

THIS MAP COMPLIES WITH NATIONAL MAP ACCURACY STANDARDS

| Meters | Feet    | DECLINATION DIAGRAM |  | ADJOINING MAPS |   |   |
|--------|---------|---------------------|--|----------------|---|---|
| 1      | 3.2808  |                     |  | 1              | 2 | 3 |
| 2      | 6.5617  |                     |  | 4              | 5 |   |
| 3      | 9.8425  |                     |  |                |   |   |
| 4      | 13.1234 |                     |  |                |   |   |
| 5      | 16.4042 |                     |  |                |   |   |
| 6      | 19.6850 |                     |  |                |   |   |
| 7      | 22.9659 |                     |  |                |   |   |
| 8      | 26.2467 |                     |  |                |   |   |
| 9      | 29.5275 |                     |  |                |   |   |
| 10     | 32.8084 |                     |  |                |   |   |

To convert meters to feet multiply by 3.2808  
 To convert feet to meters multiply by 0.3048

UTM grid convergence (CM) and magnetic declination (MA) Diagram is approximate

1 Norton  
 2 South Center  
 3 Concordia  
 4 Plainville  
 5 Clear Center  
 6 Hayes  
 7 Bassett  
 8 Salina

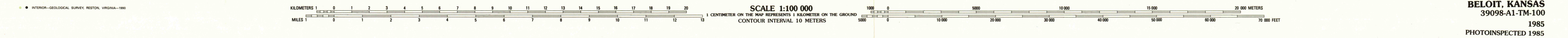
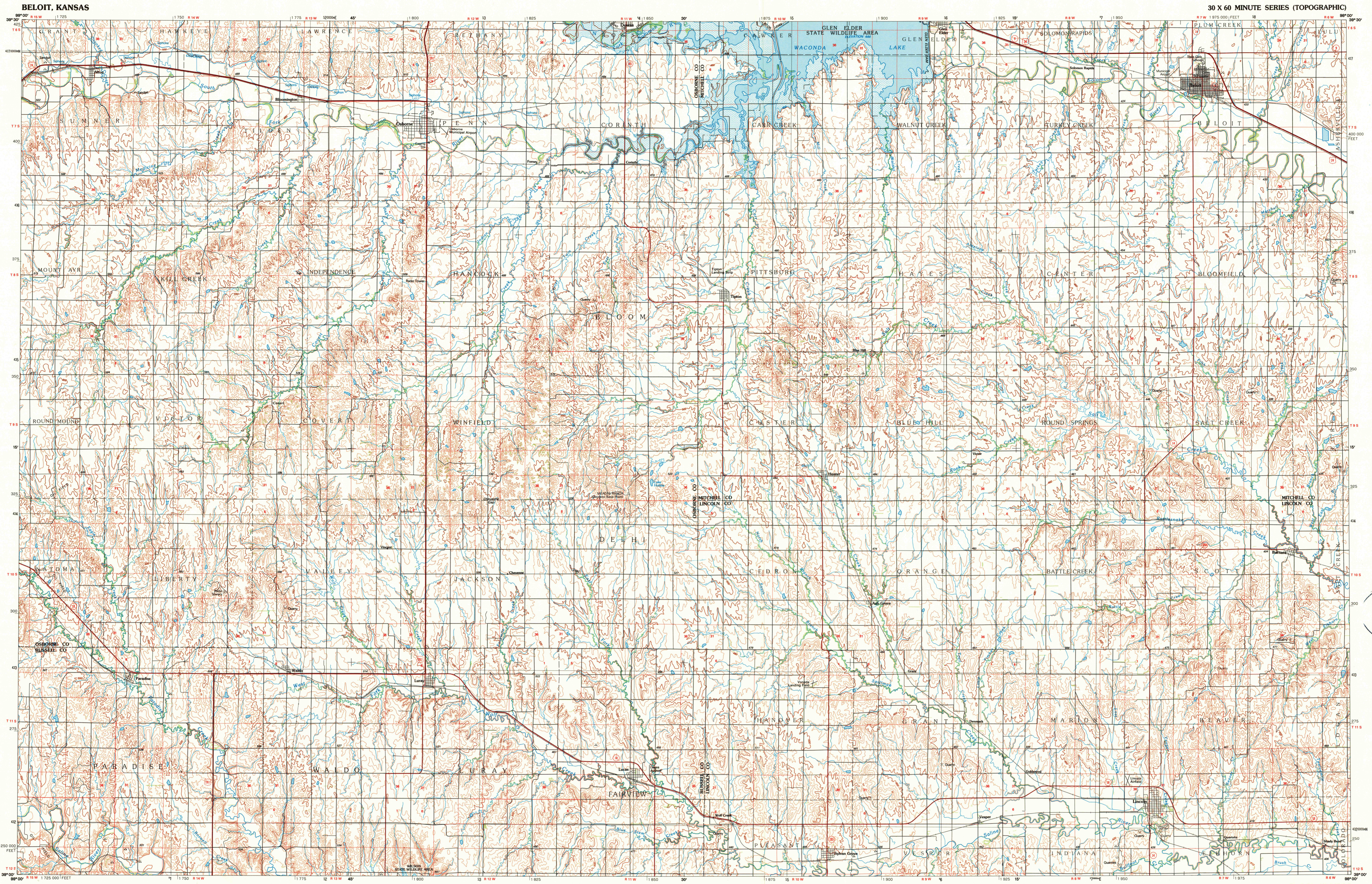
FOR SALE BY U. S. GEOLOGICAL SURVEY  
 80025, OR RESTON, VIRGINIA 22092



### Topographic Map Symbols

- Primary highway, hard surface
- Secondary highway, hard surface
- Light duty road, principal street, hard or improved surface
- Other road or street, trail
- Route marker: Interstate, U.S.; State
- Railroad: standard gage, narrow gage
- Bridge: overpass, underpass
- Tunnel: road, railroad
- Built up area, locality, elevation
- Airport: landing field, landing strip
- National boundary
- State boundary
- County boundary
- National or State reservation boundary
- Land grant boundary
- U.S. public lands survey: range, township, section
- Range, township, section line: protracted
- Power transmission line; pipeline
- Dam: dam with spill
- Canal
- Windmill; water well; spring
- Mine shaft; adit or cave; mine, quarry; gravel pit
- Campground; picnic area; U.S. location monument
- Ruin; cliff dwelling
- Disturbed surface: strip mine, lava, sand
- Contours: index; intermediate; supplementary
- Bathymetric contours: index; intermediate
- Stream, lake: perennial; intermittent
- Roads, large and small; bays, large and small
- Area to be submerged; marsh, bays, and small
- Land subject to controlled inundation, woodland
- Scrub; mangrove
- Orchard; vineyard

A pamphlet describing topographic maps is available on request



BELOIT, KANSAS  
 39098-A1-TM-100  
 1985  
 PHOTOINSPECTED 1985